

MONTGOMERY COUNTY, MD

MARYLAND'S CULTURAL CAPITAL™



DESTINATION GUIDE

- 2 Maryland's Cultural Capital
- 32 Free Things To Do Along The Red Line
- 34 Unearth MoCo's Rural Side
- 46 The C&O Canal Experience
- 60 Our Top 5 Craft Beverage Experiences



VISIT
MONTGOMERY
VISITMONTGOMERY.COM

WORK HARD

play harder



HOST YOUR NEXT EVENT
WITH US.

topgolf.com/events

CONTENTS

FEATURED ARTICLES

- 2 Maryland's Cultural Capital
- 4 Getting Here and Around
- 6 You're Welcome Here
- 32 Free Things to Do Along the Red Line
- 34 Unearth MoCo's Rural Side
- 46 The C&O Canal Experience

EXPLORE COMMUNITIES

- 10 Bethesda
- 12 Chevy Chase/Friendship Heights
- 14 Silver Spring
- 16 Rockville
- 18 Wheaton/Kensington
- 20 Gaithersburg
- 22 Germantown
- 24 MidCounty
- 26 East County
- 28 UpCounty

FESTIVALS + EVENTS

- 8 Cherry Blossom Road Trip
- 30 What's Happening
- 31 Events for Every Season

ARTS + CULTURE

- 36 Experience the Arts
- 38 Performances + Entertainment
- 39 Arts + Entertainment Districts

SHOPPING

- 40 Shopper's Paradise

HISTORY + HERITAGE

- 42 Preserving History
- 44 Weekend Getaway for History Lovers
- 48 African American Heritage

INDOOR PURSUITS

- 49 Go Play Inside

SPORTS + OUTDOORS

- 50 Hole in One
- 52 Outdoor Adventures
- 53 How Does Your Garden Grow?
- 54 Nature's Finest

MARYLAND FLAVOR

- 56 MoCo Eats
- 60 Tastemakers Trail

GATHER + GREET

- 62 Distinctly Different
- 64 Meet + Greet

66 TRAVEL DIRECTORY



► BETHESDA ROW

Visit Montgomery, MD is the official destination marketing organization for Montgomery County, Maryland. Whether you're traveling to the metropolitan area for groups, meetings, business or leisure, we're here to bring you helpful information about our area, no matter the season. Visit Visitmontgomery.com, email info@visitmontgomery.com, follow @VisitMoCo on social media, or call 240-641-6750 for more information.



**VISIT
MONTGOMERY**
VISITMONTGOMERY.COM

Photo Credits: Adam Brockett, Stan Barouh, Ken Fletcher, Paul Graunke, Peter Guthrie, Sam Kittner, Montgomery County Parks Staff, Montgomery Recreation Staff, City of Rockville Staff, City of Gaithersburg Staff, Jim Morris, Andrew Murdock, Ken Stanek Photography, Clark Day Photography, Victoria Pickering, Strathmore, Jim Saah, Marilyn Sklar, Marilyn Stone, John Zawitoski, Shutterstock, Ricky Of The World, Guillermo Olaizola, Nicole S. Glass, Lissandra Melo, Shadowland Adventures Staff, JC Silvey, Jack Goras, KRR Photography, Bethesda Urban Partnership, Federal Realty Investment Trust, Simon Properties, Peterson Companies, VisArts, C&O Canal Trust, Iwan Baan, @stephkouts, @samuelrobby and others.

MARYLAND'S CULTURAL CAPITAL

Montgomery County, MD Offers One of the Most Diverse
Collections of Communities in the United States



From the banks of the Potomac to the nation's capital, through thriving urban centers and into our Agricultural Reserve, Montgomery County unites residents and visitors through experiences that foster connections and inspire creativity.

Step into a world where diversity and inclusion are woven into the fabric of its communities. A place where cultural heritage sites enchant lifelong learners through a rich connection to national and state history. Where a wide variety of globally inspired culinary options fit every taste. And where all visitors are welcomed with open arms. With such cultural delights, rich history, and international communities, this is truly Maryland's Cultural Capital.

The variety of experiences that await you is just as diverse. Traverse national and state parks, cycle along safe and friendly trails, or revel in an agritourism brewery hop. Satisfy refined tastes at upscale boutiques and culinary venues with vibrant global zest. Broaden your horizons via approachable urban events and elite experiences at one-of-a-kind venues. Celebrate our renowned hospitality and entrepreneurial spirit.

One of "America's Best Places to Live" is also the region that embodies inclusion, where connected communities of blended cultures intertwine. Explore Montgomery County and encounter its warm embrace—with classic Maryland flavor.

► DOWNTOWN SILVER SPRING ARTS & ENTERTAINMENT DISTRICT



PACK YOUR BAGS. LEAVE YOUR ROUTINE.

From compelling entertainment at one-of-a-kind venues to outdoor experiences and from upscale boutiques to approachable urban encounters, Montgomery County hosts unexpected connections at every turn.

Geographically, Montgomery County is bordered by the Potomac River to the west (and Virginia beyond) and Washington, D.C. to the south. Frederick is to the north, Baltimore is northeast, and Annapolis is directly east. Culturally, we're at the center of it all.

Turn the page to learn all the ways to get to and around the county!

Approximate Distance to the National Mall in Washington, DC from:

Bethesda	8 miles	27 min
Silver Spring	8 miles	25 min
Potomac	14 miles	27 min
Rockville	18 miles	30 min
Gaithersburg	22 miles	35 min
Germantown	31 miles	40 min
Clarksburg	36 miles	40 min

Approximate Distance of Surrounding Cities to Rockville:

Frederick	29 miles	34 min
Baltimore	32 miles	55 min
Annapolis	44 miles	55 min
Richmond	122 miles	2 hr, 20 min
Philadelphia	145 miles	2 hr, 35 min
Pittsburgh	225 miles	3 hr, 52 min
New York City	230 miles	4 hr, 5 min

Approximate Distance of Surrounding Airports to Rockville:

Baltimore/Washington International Thurgood Marshall Airport (BWI)	36 miles	40 min
Ronald Reagan Washington National Airport (DCA)	23 miles	44 min
Dulles International Airport (IAD)	29 miles	50 min

Travel times based on average traffic volume.



GETTING HERE

Whether you're embarking on an epic road trip or flying in via one of the area's three major airports, you'll find that Montgomery County is a destination that welcomes all visitors with open arms.

We are perfectly situated in the center of three major airports—**Ronald Reagan Washington National Airport (DCA)**, **Washington Dulles International Airport (IAD)**, and **Baltimore/Washington Thurgood Marshall International Airport (BWI)**. Flights and connections arrive and depart around the clock.

If you prefer to arrive by train, **Amtrak** services **BWI Airport** and **Union Station** in Washington, DC. Take **Ride On Bus 201** from BWI or **MetroRail's Red Line** from Union Station. Speaking of Metro, you can hop on anywhere in the Washington metro area and make your way to Montgomery County.

In the age of GPS, you might not need directions by car. But for travelers who stand by their road atlases,

we've included them here: From points northwest, take I-70 East to I-270 South. From points northeast, take I-95 South to I-495 towards Virginia and then I-270 North, or I-95 South to MD 200 West. (MD 200 is an all-electronic toll road that only accepts the E-Z Pass for payment. If you do not have an E-Z Pass, you will receive a bill in the mail at a slightly higher rate.) From points south, take I-95 North to I-495 towards Baltimore and then I-270 North.

And if you like the open road but prefer not to be behind the wheel, consider taking a bus! **Vamoose Bus** operates to and from New York City from downtown Bethesda.

Got an entire group coming with you? **RMA Worldwide**, **GOGO Charters**, **Ally Charter Bus**, **DCA-car**, **National Charter Bus**, **Presidential Limousine** and **DC Charter Bus Company** provide private transportation services of all sizes.



GETTING AROUND

Once you're in Montgomery County, there are plenty of ways to get around. If you've brought your own car, you're all set! You should be aware, however, that Maryland is a hands-free state. You are prohibited from texting or using a cell phone while driving. The State of Maryland also has a rigorous speed camera program, so pay attention to the posted speed signs and drive carefully.

If you're relying on other options, we've got you covered. **Barwood Taxi** has served Montgomery County since 1960, and features Verifone technology with credit card payment and video onboard. Based in Rockville, **RMA Worldwide Chauffeured Transportation** has the largest fleet of sedans, SUV's, limousines, and minibuses in the area. You can also explore every part of the county with a rideshare from **Uber** or **Lyft**.

There are 13 Red Line Metro stations that serve Montgomery County. Many of our neighborhoods are accessible via **Metro**, and there is lots to do without ever leaving the Red Line!

(Check out Free Things to Do on the Red Line on page 32.)

Each Metro station also offers transfers to Metro buses and Ride On buses. Between the two, you can access most neighborhoods in the county. The **Washington Metro Area Transit Authority (WMATA)** has a free on-line trip planner that can help you navigate by rail, bus, or a combination of the two.

If you're feeling active, the **Capital Bikeshare** system offers bicycles for rent at more than 300 stations in the metro area. You can also explore by e-bike with rentals from **Pedego** in Bethesda.



➤ METRORAIL

ACCESSIBILITY

Montgomery County has a long history of inclusion, making it easy for travelers of all abilities to explore and enjoy everything the area has to offer. From accessible hotels and attractions to transportation options and scooter rentals, we're here to help make your trip comfortable and stress-free.

Scan the QR code to explore our Accessibility Resources page for tips, tools, and accessible travel ideas around the county.



Scan the QR code to plan your trip using the WMATA Metro Trip Planner.



➤ PEDEGO BIKES ALONG THE C&O CANAL TOWPATH

YOU'RE WELCOME HERE

One of “America’s Best Places to Live” is also the place that embodies inclusion, where connected communities of blended cultures intertwine. Montgomery County is a prime destination for all types of people, filled with welcoming residents and friendly faces.



▶ GREAT FALLS MARYLAND



▶ KITES OVER CLARKSBURG

DIVERSE CULTURES

One of the best things about Montgomery County is the wide variety of cultural communities that connect and blend throughout the region.

According to *WalletHub*, the County is one of the most diverse communities in the country. Germantown, Gaithersburg and Silver Spring, rank in the site's "Top 10 Most Diverse Communities in the U.S."

To speak to this claim, consider the facts that 33% of Montgomery County's population is foreign-born and 43.7% of the population speaks at least one language other than English at home.

PRIORITY ON HUMAN RIGHTS

The people and organizations in Montgomery County place a high priority on human rights and equality. Both Rockville and Gaithersburg have achieved perfect scores in the Municipality Equality Index (MEI), according to the Human Rights Campaign (HRC).

In addition, the County ranks high where Black residents are prospering in the "Black Progress Index" by the Brookings Institution. This study examines the social factors that influence Black well-being.

A GREAT PLACE TO LIVE

All of these facts show what a great place Montgomery County is to live. The region has been recognized at the national level not only for its diversity and inclusion but also for the well-rounded se-

lection of activities, excellent education, and supportive atmosphere.

In 2024 and 2025, Silver Spring was ranked #1 in *Fortune* magazine's "Best Places to Live for Families."



TAKE THE ULTIMATE CHERRY BLOSSOM ROAD TRIP AROUND MONTGOMERY COUNTY

The blooming of Washington, DC's famous cherry blossoms are the region's first sign that winter is over and spring is here to stay. If you're looking to venture beyond the Tidal Basin, then this ultimate cherry blossom road trip is a perfect opportunity to explore Montgomery County, Maryland. So, load your kids in the car, turn on your favorite tunes, roll down your windows, and most of all... have fun!

KENWOOD NEIGHBORHOOD Kennedy Drive, Bethesda, MD

Visiting the cherry trees in the Kenwood neighborhood near Bethesda and Chevy Chase is considered a less crowded alternative to viewing the Tidal Basin's trees. In the early 1930s and '40s, a local developer planted cherry trees as a way to promote the neighborhood to potential home buyers. Now, more than 1,200 trees grace the neighborhood, bearing hundreds of thousands of beautiful, tiny pink and white flowers that bloom during the spring season. The best cherry blossom viewing can be found along Kennedy Drive, Dorset Avenue, and Kenwood Avenue.

GLENVIEW MANSION AT THE CIVIC CENTER PARK 603 Edmonston Drive, Rockville, MD

Enjoy a picnic under a Yoshino cherry tree with a view of Glenview Mansion at the Civic Center Park in Rockville. There is also a gorgeous cluster of Kwanzan cherry trees that line the driveway when you arrive at the park. According to the City of Rockville's horticulturalist, Kwanzan trees bloom a week or two after their Yoshino cousins.

BROOKSIDE GARDENS 1800 Glenallan Avenue, Wheaton, MD

You can view more than 300 cherry blossom trees in Montgomery County's parks and get a jump start on spring festivities. Brookside Gardens has 26 cherry trees that are located in the Gude Garden along the HeartSmart Trail and near the pond. There are also trees near the Conservatory. Like clockwork, the cherry trees reach peak blooms on or around April 1.

TAKOMA PARK NEIGHBORHOOD Takoma Park, MD

Cherry trees are sprinkled throughout historic Takoma Park. For the biggest flower impact, turn down Flower Avenue, between Jackson and Garland Avenues, and then turn down Boyd Avenue, between Jackson and Lincoln Avenues. Afterward, be sure to explore some of the local shops along Main Street Takoma.

▶ WASHINGTON, DC



GOOD TIMES GREAT DRINKS

IN MONTGOMERY COUNTY
MARYLAND



▶ Sugarloaf Mountain Vineyard



▶ The Crossvines

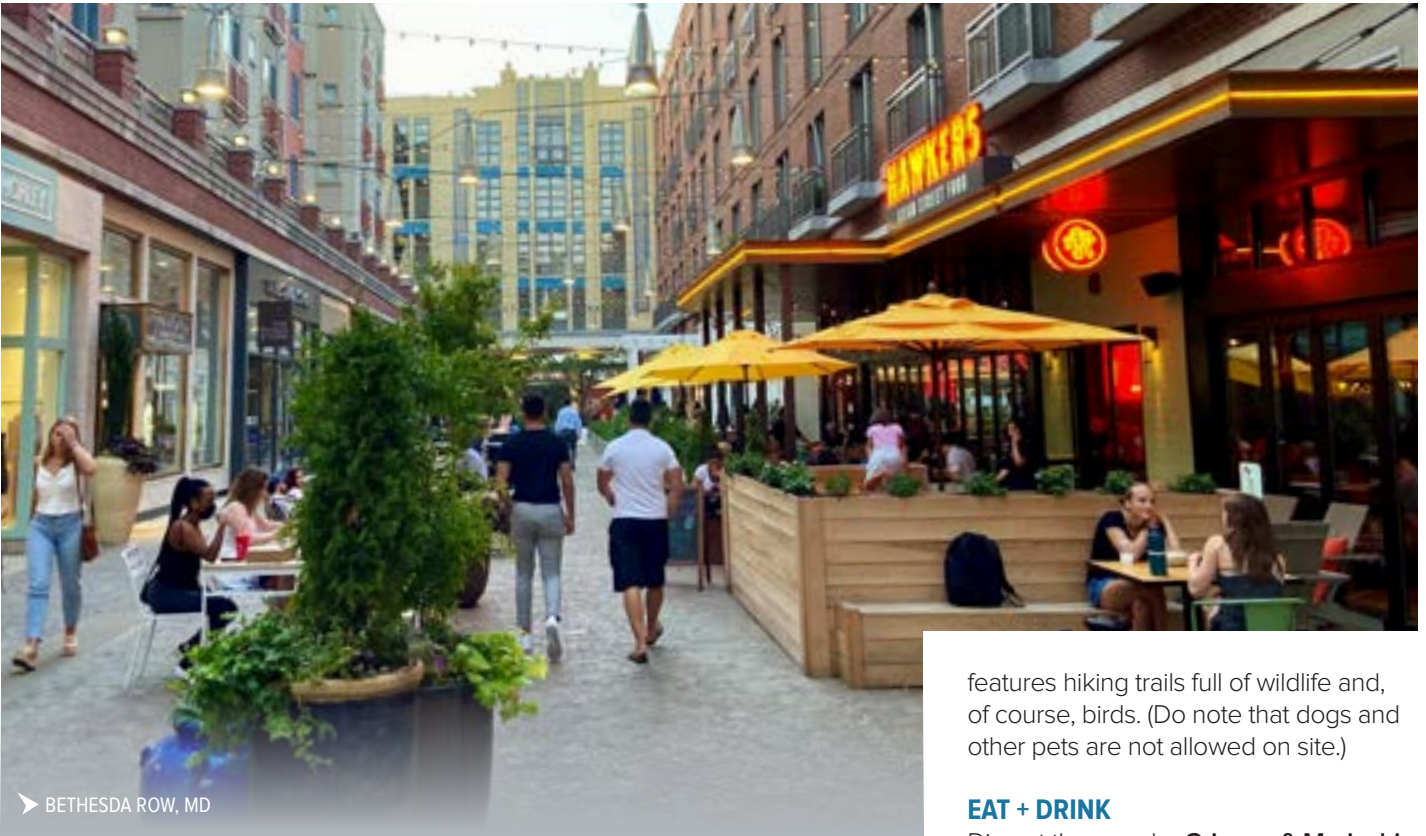


▶ Song Dog Distillery

TASTEMAKERS *Trail*TM

▶ TASTEMAKERSTRAIL.COM

 **VISIT
MONTGOMERY**
MARYLAND'S CULTURAL CAPITAL™



➤ BETHESDA ROW, MD

features hiking trails full of wildlife and, of course, birds. (Do note that dogs and other pets are not allowed on site.)

EAT + DRINK

Dine at the popular **Gringos & Mariachi**, try a classic French entrée at **Mon Ami Gabi**, or indulge in your sweet tooth at the **Tatte Bakery & Café**. Or try all three and create your own culinary tour in Bethesda.

SHOP + FIND

Downtown Bethesda is home to numerous fashion boutiques, home design shops, art galleries, and tech stores. Get ready for your night out with the perfect outfit from **Anthropologie** at **Bethesda Row**. Or visit Westfield Montgomery for additional shopping at stores like Nordstrom, Lululemon, and Apple.

BETHESDA

For some of the area's best entertainment, look no further than Bethesda, one of three Arts & Entertainment Districts in Montgomery County. Hop on and off the **Bethesda Circulator** on your way to and from shops, theatres, restaurants, parking garages, and the Metro. All your favorite downtown Bethesda destinations are on or close to the route!

SEE + DO

See a world-class performance at **Round House Theatre**, take the kids to **Imagination Stage**, or stop by the **Bethesda Theatre** for dinner and a show. Looking to get outdoors? The **Capital City Crescent Trail** connects cyclists, walkers, and joggers from Bethesda to Silver Spring and into Georgetown, Washington, D.C. The **Woodend Sanctuary and Mansion**



➤ BETHESDA CIRCULATOR



Experience World-Class Theatre

Catch a show at Round House Theatre, where world-class performances meet community programs like Free Play, offering free tickets for teens to experience live theatre.



Bethesda

A world in one neighborhood.



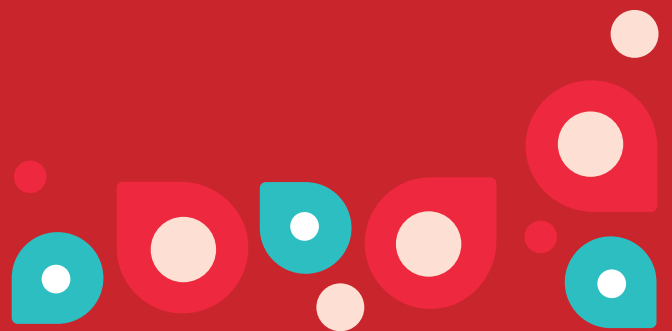
Enjoy great restaurants, fashionable boutiques, home décor shops, art galleries and live theatre in downtown Bethesda. Outdoor festivals, cultural events and evening entertainment make downtown Bethesda your complete community destination.

FOR A CLOSER LOOK, VISIT BETHESDA.ORG.

Bethesda
URBAN PARTNERSHIP

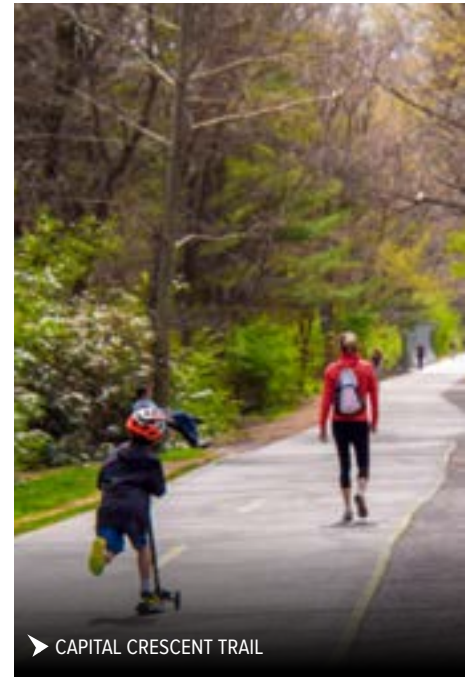
 ARTS &
ENTERTAINMENT
DISTRICT

 TRANSPORTATION
SOLUTIONS





➤ JUNCTION BISTRO, BAR & BAKERY CHEVY CHASE



➤ CAPITAL CRESCENT TRAIL

CHEVY CHASE/ FRIENDSHIP HEIGHTS

Just north of Washington, D.C., Chevy Chase blends urban sophistication with neighborhood charm. This walkable community invites visitors to slow down and enjoy life's little luxuries, including elegant shops, cozy cafés and celebrated restaurants. With its mix of city energy and suburban ease, Chevy Chase is an ideal spot to explore, unwind, and treat yourself.

SEE + DO

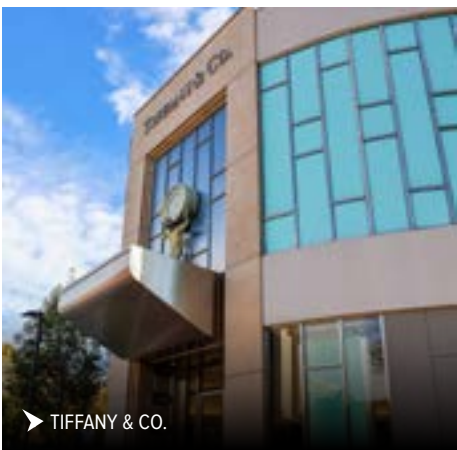
Get outdoors and take in the beauty of Chevy Chase with a bike ride or stroll along the **Capital Crescent Trail**, connecting the community to Bethesda and D.C. Nature lovers will also enjoy **Rock Creek Regional Park**, where wooded trails, picnic areas, and wildlife make for a perfect escape in the middle of the city.

EAT + DRINK

Start your day in **Friendship Heights** with a cup of coffee from a local café, then return later for happy hour drinks at **Hunter's Hound** or a family dinner at **Clyde's of Chevy Chase**. The mix of family-friendly favorites, fine dining, and casual lunch spots make this neighborhood a must-visit for food lovers.

SHOP + FIND

Friendship Heights is the perfect spot to pick up a special occasion dress, a monogrammed wedding gift, or new kitchen essentials, all in one stop. Throw a feast with international groceries from **Rodman's** or **Whole Foods**, and pick up an anniversary gift at **Tiffany & Co.** With its blend of luxury boutiques and locally loved shops, Chevy Chase makes shopping an experience to savor.



➤ TIFFANY & CO.



➤ THE SHOPS AT WISCONSIN PLACE



outdoor garden terrace
contemporary ballroom
full service catering
ideal location
marriott rewards



WHEN YOU
CELEBRATE
LIFE,
CELEBRATE
HERE



weddings
bar/bat mitzvahs
special occasions

COURTYARD®

5520 Wisconsin Avenue
Chevy Chase, MD 20815
Marriott.com/wasvy

BY MARRIOTT
Bethesda Chevy Chase

information@cychevychase.com 301 656 1500

AFI Silver
THEATRE and CULTURAL CENTER

One of the world's premier film centers

AFI Silver Theatre showcases the very best in American and international cinema. Featuring a year-round mix of dynamic programming, including new art-house films, classic retrospectives, festivals, and unique live special events.

Just north of Washington, DC

8633 Colesville Road
Silver Spring, MD
Red Line to Silver Spring

AFI.com/Silver

[f](https://www.facebook.com/AFISilverTheatre) AFISilverTheatre | [t](https://twitter.com/AFISilver) AFISilver
[i](https://www.instagram.com/AFISilverTheatre) AFISilverTheatre

Clyde's
of Chevy Chase

DISCOVER THE DIFFERENCE IN A
CLYDE'S OYSTER

EXCEEDS SAFETY STANDARDS
Oysters are lab-tested bi-monthly to exceed FDA standards

SUPPORTS SUSTAINABILITY
Shells are recycled to restore oyster beds in the Chesapeake Bay

RESPONSIBLY SOURCED
Sourced from the finest farms on the east and west coasts

OYSTER HAPPY HOUR
Join us for discounted oysters, draft beers, house wines, rail drinks, mojitos & mules

AVAILABLE DAILY
3PM-6PM & 10PM-CLOSE

5441 WISCONSIN AVE, CHEVY CHASE, MD | 301-951-9600 | CLYDES.COM

TORCHY'S TACOS
HOOKY HOUR
DINE-IN ONLY WEEKDAYS 2-6PM

LIVE. LAUGH. LEAVE WORK EARLY.

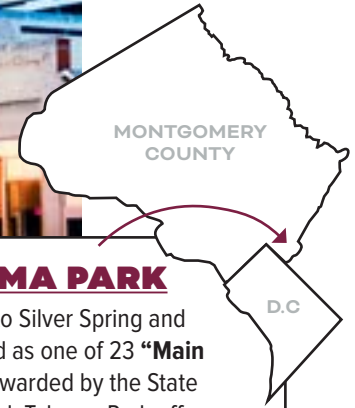
HALF-PRICED DRINKS
COCKTAILS • IMPORTED BEER

NEW EXCLUSIVE APPETIZERS

[QR CODE](#)



➤ AFI SILVER THEATRE & CULTURAL CENTER



TAKOMA PARK

Neighbor to Silver Spring and designated as one of 23 “**Main Streets**” awarded by the State of Maryland, Takoma Park offers a small-town spirit with urban sophistication. Listen to live jazz music and enjoy original works of art. Shop year-round at the **Farmers Market** and check out boutiques for unique clothing and gifts. If you’re visiting in spring or fall, check out the community’s annual festival, the **Takoma Park Street Festival** in October.

SILVER SPRING

As a state-designated Arts and Entertainment District, Silver Spring is your go-to entertainment spot in Montgomery County. The highly walkable downtown area has tons of options for a night out on the town.

SEE + DO

Rock out to live music at **The Fillmore** or see the latest independent films at the **American Film Institute (AFI) Silver Theatre and Cultural Center**, home to the international film festival AFI Docs. For a dose of nature, head to **Acorn**

Park in downtown Silver Spring. This area is believed to be the site of the eponymous “silver spring” that inspired the community’s name. Or take a drive to **Sligo Stream Valley Park**, which has paved biking trails along the creek and lots of playgrounds for the kids.

EAT + DRINK

Find the brew for you, whether you need a caffeine kick from **Java Nation** or want to wind down with a local beer from **Silver Branch Lagerhaus & Biergarten**. Enjoy a contemporary twist on seasonally

inspired dishes at **All Set Bar + Kitchen**, savor a classic cocktail at **J. Hollinger’s Waterman’s Chophouse**, or relax at **Zinnia’s** popular outdoor garden.

SHOP + FIND

Shopping opportunities are abundant, including the popular **Ellsworth Place** and **Downtown Silver Spring** center.



➤ TAKOMA PARK FARMERS MARKET





MAKE YOURSELF HOME.

HOME2 SUITES WANTS YOU TO PUT YOUR FEET UP.



Home2 Amenities Include:

Stylish studio & one-bedroom suites with kitchen | Free Wi-Fi | Free breakfast at the Inspired Table™ Spin2Cycle laundry & fitness room | Outdoor lounge areas* | Pet-friendly | Saline pools
Coffee and tea served 24/7 | Relax & connect in our Oasis | The Home2 Guarantee

* Available at most properties

Michael Lauriente Director of Sales & Marketing
Home2 Suites by Hilton Silver Spring

1701 Elton Road,
Silver Spring, Maryland 20903
301-965-8200





➤ THE SQUARE ROCKVILLE



➤ VISARTS

FUN FACT

The REM song “Don’t Go Back to Rockville” was written about Ingrid Schorr, who attended college with a band member and describes a town that isn’t quite like the real one.



➤ THAI CHEF RESTAURANT

ROCKVILLE

NORTH BETHESDA / POTOMAC

There’s so much to do in Rockville, you could spend your entire weekend exploring this one community! Anything you could want to do, eat, or buy can be found in this bustling urban area.

SEE + DO

Rockville was once home to F. Scott Fitzgerald, author of *The Great Gatsby*, and his wife, Zelda. Fittingly, the community’s **F. Scott Fitzgerald Theatre** is a vibrant, local theatre dedicated to the performing arts. In addition to the theater, **The Square Rockville** has free concerts and outdoor movies in warm weather and an outdoor ice rink when temperatures drop. To exercise your creative talent, visit **The Clay CoOp** for pottery classes, community events, and a gallery experience, or paint with your pals at **VisArts**. Spend an enlightening evening in North Bethesda at **The Music Center and Mansion at Strathmore**. For an edgier vibe, catch a live band at **Hank Dietle’s Tavern**, the first bar in MoCo to reopen after prohibition.

EAT + DRINK

A world of ethnic cuisine is available,

with Lebanese, Chinese, Italian, Cuban, Greek, and Japanese restaurants to satisfy your taste buds. Enjoy made from scratch cuisine at **MoCo’s Founding Farmers** or savor the vibrant colors and bold flavors of Bangkok at **Thai Chef**. Head over to Pike & Rose for a Brazilian feast at **Fogo de Chao** or **Pinstripes** for a game of bowling or bocce with your meal.

SHOP + FIND

Located at the crossroads of Rockville Pike, Montrose Parkway, and Old Georgetown Road, **Pike & Rose** is a

charming neighborhood featuring many well-known retailers and dining establishments. From open air boutiques to live music, you’re sure to find an enjoyable experience. Support women-owned businesses and discover one-of-a-kind gifts at **Shop Local**, part of the Maryland Women’s Business Center, showcasing up-and-coming makers.



OUTDOOR SCULPTURES AT THE GLENSTONE MUSEUM

As one of Montgomery County’s most colorful sculptures, “Split-Rocker” by Jeff Koons looks great from every angle.



explore
ROCKVILLE
MARYLAND

A VIBRANT CITY WITH SOMETHING FOR EVERYONE



History & Culture



Arts & Entertainment



Dining & Nightlife



VISIT [EXPLOREROCKVILLE.ORG](https://explorerockville.org) TO
DISCOVER EVENTS, ENTERTAINMENT,
RESTAURANTS AND MORE!



FUN FACT

Wheaton is one of the three Maryland-designated Arts + Entertainment districts in Montgomery County.

► BROOKSIDE GARDENS

WHEATON / KENSINGTON

If you arrive via Metro to the Wheaton station, you'll take the longest escalator in the Western Hemisphere to get above ground. While a 508-foot escalator might not be an attraction you'd travel to see, there's plenty here to keep you busy.

SEE + DO

The award-winning botanical gardens at **Brookside Gardens** contain 50 acres of public garden displays, including two conservatories for year-round enjoyment. In the summer, the **The Butterfly**

Experience exhibit features hundreds of butterflies from around the world. During the winter holidays, the annual **Garden of Lights** is a must-see, along with the light display at the **Washington D.C. Temple** in Kensington. Any day is perfect for a self-guided walking tour around the **Wheaton Urban District** to discover a wide array of Instagram-worthy murals and sculptures.

EAT + DRINK

If you're looking to span the globe without leaving town, explore the diverse



► WASHINGTON D.C. TEMPLE

palate of Wheaton through authentic restaurants like **Los Chorros**, **Gisele's Creole Cuisine**, and **Ruth's African Kitchen**. For an epic pizza road trip, be sure to visit **Stained Glass Pub** in Glenmont, **Manny & Olga's Pizza** in Wheaton, and **Frankly Pizza** in downtown Kensington.

SHOP + FIND

Take a step back in time through a shopping experience at **Kensington's Antique Row**. The variety of antique shops and vintage bookstores perfectly exemplify why the area is known as the DC metro area's largest and oldest antique center. Nearby, the historic and quaint **Noyles Library for Young Children** is a magical, sun-filled spot for the littlest book lovers. Afterwards, head over to **Westfield Wheaton** to return to the present with popular retail stores and a luxury movie experience.



► KENSINGTON'S ANTIQUE ROW



Positively Bethesda!



At Canopy by Hilton Washington DC Bethesda North, **we've got you covered.**

canopy[™]
BY HILTON

WASHINGTON DC | BETHESDA NORTH

940 Rose Avenue | North Bethesda, MD 20852
Tel: +1-301-862-9400 | canopybethedanorth.com

- A positively local stay in North Bethesda, MD's Pike & Rose community
- Complimentary Canopy Bikes or a quick walk to eateries, shops and entertainment
- Just Right rooms and suites with Canopy-exclusive beds, free Wi-Fi and surprising extras
- Dining and drinks at Hello Betty, a vibrant and playful space, with a 60-foot outdoor Boat Bar.
- On-site spa and salon plus a complimentary 24-hour fitness center
- 6,500 sq. ft. of inspired event space including a sunlit ballroom and rooftop deck



➤ GAITHERSBURG COMMUNITY MUSEUM

GAITHERSBURG

Gaithersburg is a close-knit community that supports local farmers, artisans, and artists. The diversity of its residents contributes to the wide variety of global cuisine found here.

SEE + DO

Find farm-fresh produce and other items at the **Thursday Farmers Market** at Casey Community Center and the **Saturday Main Street Market** in Kentlands. Be sure to make a stop at **Gaithersburg Concert Pavilion** for outdoor summer concerts and family-friendly performances. For plays, local art, and other performances throughout the year, visit **The Arts Barn**. More works by local and regional artists are displayed at the **Activity Center at Bohrer Park** and **Kentlands Mansion**. In May, the **Gaithersburg Book Festival** hosts author presentations and writing workshops. If you're into science and history, the **Gaithersburg Latitude Observatory** is one of six International Latitude Observatories and was designated a National Historic Landmark. Into the outdoors? **Seneca Creek State Park**, located between Germantown and Gaithersburg, offers 6,300 acres of forest and farmlands where visitors can hunt, fish, and hike.

EAT + DRINK

The **Kentlands** neighborhood is home to a variety of cuisines, including Thai, Greek, Middle Eastern, Vietnamese, Italian, Mexican, and of course, American. From **Copper Canyon Grill and Lake Barge House** to **True Food Kitchen** and everything in between, **rio's** lakefront offers a wide selection of restaurant options for every taste and style.

SHOP + FIND

Take a laid-back stroll through the shops along **rio's** lakefront, including **Locally Crafted Workshop** and other popular



➤ GAITHERSBURG BOOK FESTIVAL

stores. Follow the boardwalk to take a ride on the carousel and relax at the fire lounge with views of the lakefront. For an added adventure, try **paddle boating** for an up-close view of the fountains located throughout the lake.



THE SWINGS AT THE MONTGOMERY COUNTY AGRICULTURAL FAIR

If you're in the area in August, the swings (and let's be real, most any of the rides) at the Montgomery County Agricultural Fair make for a great shot.



DOUBLETREE
BY HILTON™
WASHINGTON DC
NORTH/GAITHERSBURG

Connect & Create Memories



Looking to host an event? Ask about our 16,000+ sq. ft. of event spaces!



Doubletree by Hilton Gaithersburg

620 Perry Parkway
Gaithersburg, Maryland 20877

1+ (301) 977-8900

DoubletreeGaithersburg.com

Surrounding Attractions

- AstraZeneca & Novavax and Leidos
- NIST (National Institute of Department of Energy)
- FDA
- RIO Lakefront
- I-270 BioTech Corridor
- I-270 Innovation Labs
- Shady Grove Metro Station



➤ SOUTH GERMANTOWN DRIVING RANGE



➤ BLACKROCK CENTER FOR THE ARTS

GERMANTOWN

If you like to stay active, Germantown is the place to be. From organized sports to outdoor adventures, it's hard to be bored here if you like to keep moving.

SEE + DO

With sports options ranging from the **MD Soccerplex & Adventist Health-Care Fieldhouse** to an indoor pool, the **South Germantown Recreational Park**

is sure to fill up your day with adventure and fun. Or you can head to **Black Hill Regional Park** and spend the day hiking and kayaking. Head to **Hoyles Mill Conservation Park** for a secluded, undeveloped park with scenic trails. Get your creativity flowing at **Black Rock Center for the Arts**, where you can enjoy live shows, art exhibits, and outdoor events.

EAT + DRINK

For group and family fun, plan a visit to **Top Golf Germantown**. From beginners to regulars, everyone can enjoy the game and some great food. Or savor flavorful cuisine at **Sabai Sabai Simply Thai**, where fresh, authentic dishes like classic Pad Thai, spicy curries and noodle favorites that transport you straight to Thailand

SHOP + FIND

For a different outdoor experience, visit **Butler's Orchard** to pick-your-own from May to December. Known for their abundant strawberries, they also have a variety of fruits, vegetables, pumpkins, and even Christmas trees available seasonally. The **Lancaster County Dutch Market** is a collection of vendors born and raised in the central Pennsylvania area that has been serving Germantown for over 20 years, homemade foods, candies, groceries, and furniture. The **Lodge at Little Seneca Creek** is a beautiful, rustic building with vast green spaces maintained by Montgomery County Parks that can be rented for weddings and other events.

FUN FACT

The Maryland SoccerPlex is a nonprofit and has 21 natural grass fields, 3 artificial turf fields, and 8 indoor convertible basketball/volleyball courts.



➤ BUTLER'S ORCHARD



Work Well, Eat Well & Rest Well

AT OUR GERMANTOWN, MD HOTEL

Free



WiFi



Breakfast Buffet



Coffee/Tea in Lobby



Business Center



Fitness Center



Swimming Pool

This Germantown, Maryland hotel offers travelers, whether business or leisure, everything they need for a productive stay. Easily venture to D.C. with Shady Grove Metro Center, 5 miles away or local attractions Black Rock Center for the Arts and Maryland SportsPlex. We're also about 30 miles from DCA, IAD and BWI Airports. Within walking distance to several restaurants.

- ▶ Rooms, Studios and Whirlpool Suites Available
- ▶ Microwave and Mini-Fridge
- ▶ 533 Sq. Ft. of Meeting Space
- ▶ Only 1 Exit from Clarksburg Premium Outlets

Fairfield[®]
BY MARRIOTT

Marriott.com/WASGE

Fairfield Inn & Suites
Germantown Gaithersburg

20025 Century Blvd, Germantown, MD 20874
P. (301) 916-0750. F. (301) 916-0751



➤ LONE OAK FARM BREWERY



➤ ADVENTURE PARK AT SANDY SPRING



MIDCOUNTRY

OLNEY / SANDY SPRING / BROOKEVILLE / DERWOOD

Mid County encompasses several tight-knit communities with deep roots and open arms. Here, the cultural significance of historic Maryland meets the modern-day culture of award-winning performances.

SEE + DO

History buffs will love spending time at the **Woodlawn Manor Cultural Park** in Sandy Spring. The museum features multimedia exhibits highlighting the Underground Railroad, the agricultural

...pe, and the Quaker experience. **Agricultural Farm Park** includes the Ma-Bussard Farmstead, a preserved example of a Montgomery County farmstead at the turn of the 20th Century. For adventurous visitors, the **Adventure Park at Sandy Spring** (located next door to Woodlawn Manor) features 15 different aerial forest adventures. And don't miss the diverse and popular productions at the award-winning **Olney Theatre Center**.

EAT + DRINK

Kick back and enjoy local brews at **Lone Oak Farm Brewery** and **Brookeville Beer Farm**, where you can unwind in the country atmosphere while enjoying small plates, stone-fired pizzas, and more. To extend your trip and try a few more flavors, head to **Waredaca Brewing Company**, **Elder Pine Brewing and Blending** or **Fallen Oak Distilling**.

SHOP + FIND

Continuing the historical theme, find old and new treasures you didn't even know you wanted at the **Olney Antique Village**. If you are looking for the perfect gift, **Sandy Spring Museum** offers an extensive gift shop with goods created by local artists, unique exhibits, community events, and the popular **History Happy Hours**.



➤ WOODLAWN MANOR CULTURAL PARK

OLNEY THEATRE CENTER



SEE WHAT'S PLAYING
OlneyTheatre.org

STONE SILO

BREWERY
DAMASCUS, MARYLAND



As Montgomery County's premier farm brewery, we are committed to sustainability, local ingredients, and brewing beer using the best practices possible. Our beers include ingredients grown/produced on the farm and our production schedule is directly related to harvest timing. The farm has been in the family for over 60 years, and we pride ourselves in a brewery that functions in harmony with the wide array of activities that make this place what it is today. Cheers! We'll see you at the farm!

WAREDACABREWING.COM | 301-774-BEER
4017 Damascus Road | Laytonsville, MD 20882



The Adventure Park
AT SANDY SPRING FRIENDS SCHOOL

CLIMBING, ZIPLINING & AXE THROWING

Day & Night Outdoor Fun in the DMV for All Ages!
Open Seasonally March - December

Visit TheAdventurePark.com



16701 Norwood Rd, Sandy Spring, MD



► NATIONAL CAPITAL TROLLEY MUSEUM

FUN FACT

In colonial times, Burtonsville was referred to as the “Patuxent Hundred” and later the Eastern Branch Hundred, a community comprising of about 100 inhabitants.

EAST COUNTY

BURTONSVILLE / COLESVILLE

East County is an outdoors enthusiast’s paradise. Even in the more developed areas, city parks dot the neighborhoods and provide much-appreciated green space. But the impressive natural beauty of the Patuxent River is hard to beat.

SEE + DO

At the **Rocky Gorge Reservoir**, keep an eye out for heron, deer, and other wild-

life while you hike. The **Patuxent River** can be fished year-round and is an angler’s dream come true. Established in 1959, **Brighton Dam’s Azalea Garden** located at the **Triadelphia Reservoir** is home to over 22,000 azalea bushes over five acres in a hardwood forest. Kousa dogwood trees were added in the 1990’s and the garden is also home to Montgomery County’s champion fringe tree. For another type of outdoor

activity, check out the **National Capital Trolley Museum** in Colesville. Some of their 17 streetcars take you on a mile-long ride through the woods while you learn about the history, mission, and development of trolleys.

EAT + DRINK

Experience the authentic flavors of grandma’s kitchen at **Cuba de Ayer** with fan favorites like ropa vieja (shredded beef in a Cuban tomato sauce) and tres leches cake. Love brunch? **Eggspectation** offers day and evening menus, complete with signature mimosas flights.

SHOP + FIND

Take a trip to the year-round market at **Heyser Farms** for fresh fruit and vegetables, sweet cider, baked goods, flowers and mulch, local milk, eggs, bread, ice cream, honey, and jams. In Burtonsville, **Burtonsville Crossing** is the perfect place to shop and find deals and gifts for your loved ones.



► PATUXENT RIVER

FEDERAL
1962



Where moments are made.



Discover Montgomery County
Shopping Destinations

PIKE & ROSE BETHESDA CROW CONGRESSIONAL PLAZA WILDWOOD
GAITHERSBURG SQUARE QUINCE ORCHARD PLAZA EL MERCADO FEDERAL PLAZA NONTROSE CROSSING

ALL DAY BREAKFAST SANDWICHES **HANDMADE TOTS SMOOTHIES**



www.chefbsdiner.com

EVERY SAUCE, EVERY BITE—MADE BY HAND.



**MOBILE DINER
LOCALLY OWNED
SCRATCH COOKING
100% AWESOME**



*"The best tater tots I've
ever had in my life."*

★★★★★G



Try Our Famous TOTS! Online Ordering! @chefbsdiner
Clarksburg Premium Outlet Mall | Pickup & Delivery



THE GROVE

7747 Tuckerman Ln, Potomac, MD 20854

- Ferris Wheel Fries - - Fried Chicken Dinner - - Cocktails & Wine -



Weekly Specials

Happy Hour
Monday - Friday 3-6pm
Saturday - Sunday 3-5pm

Every Monday:
Montgomery Moms Night Out
Kids Eat FREE
Every Tuesday: "Tini" Tuesdays

Every Wednesday: Prime Rib Wednesday
Thursday: Live Music Thursdays
Catch us every Thursday through Sunday
for our Football Specials and cheer on
your team!



Tikvat Israel Congregation

**Offering Prime Event and Meeting
Space Conveniently Located in
Rockville, MD**

Social Hall: 5400 square feet of
unobstructed space.

Banquet seating: up to 200 people

Auditorium seating: up to 450 people

Adjacent Lobby Reception Area

Library: Banquet seating: up to 60 people
Separate Entrance and Lobby Area

**Kosher Catering Services Available.
Everything from Coffee Service to Seated
Banquet.**

2200 Baltimore Road, Rockville, MD

Phone: 301-762-7338

Email: aaron@tikvatisrael.org



➤ SUGARLOAF MOUNTAIN VINEYARDS

working horse farm at **Waredaca Brewing Company**. Participate in a farm-to-table dinner at **Calleva Farm** or enjoy a barbecue feast during “Fridays at the Farm” at **Smokey Glen Farm**. For a truly unique pint, head to **Elder Pine Brewing and Blending** for a modern twist on a classic style. For a taste of bourbon, rye whiskey, and seasonal liqueurs, visit **Song Dog Farm Distillery** and enjoy a modern country setting spread across acres of farmland.

UPCOUNTY

POOLESVILLE / CLARKSBURG / DAMASCUS / LAYTONSVILLE

Rustic experiences abound in UpCounty, where Montgomery County’s rural side comes to life. (Read more, including information on the County’s hot spot—**The Crossvines**—on page 34.) Along with local food and wares, the area is home to nature preserves, animal and avian centers, and historic farms.

SEE + DO

Architect Frank Lloyd Wright once had grand plans for an elaborate mountain-top observatory on top of **Sugarloaf Mountain**, but those plans never materialized. To understand his desire, leisure hikers as well as more serious athletes can trek the 1,000 feet to the top and take in the farmland view. The biking and hiking is also prime along the **C&O Canal Towpath**, where you can stay overnight in one of the Civil War-era lockhouses. On a clear day in mid-July, wander through 30 acres of vibrant sunflowers at the **Mckee-Beshers Wildlife Management Area**.

EAT + DRINK

The beverages are on point in UpCounty! Sip on some of Maryland’s most decorated wines at the **Sugarloaf Mountain Vineyards**, where you can listen to live music, snack on bites from food trucks, or schedule a winery tour. Head to the family-owned **Windridge Vineyards** for carefully-selected wines based on a unique mix of geology and microclimate. Enjoy a pint and a taste of Montgomery County’s local craft beer scene on a

SHOP + FIND

The eclectic retail experiences in UpCounty make for a shopping adventure. Stroll around Poolesville and take in the charming shops and ambiance. Hunt for bargains at **The Clarksburg Premium Outlets**. Stop by **Deere Valley Farms**, a year-round farm market, for fresh meat, artisan cheeses, and farm-to-cone ice cream. Or create your own driving experience between the **Countryside Artisans’** studios during their tours held each year and take home locally-made art.



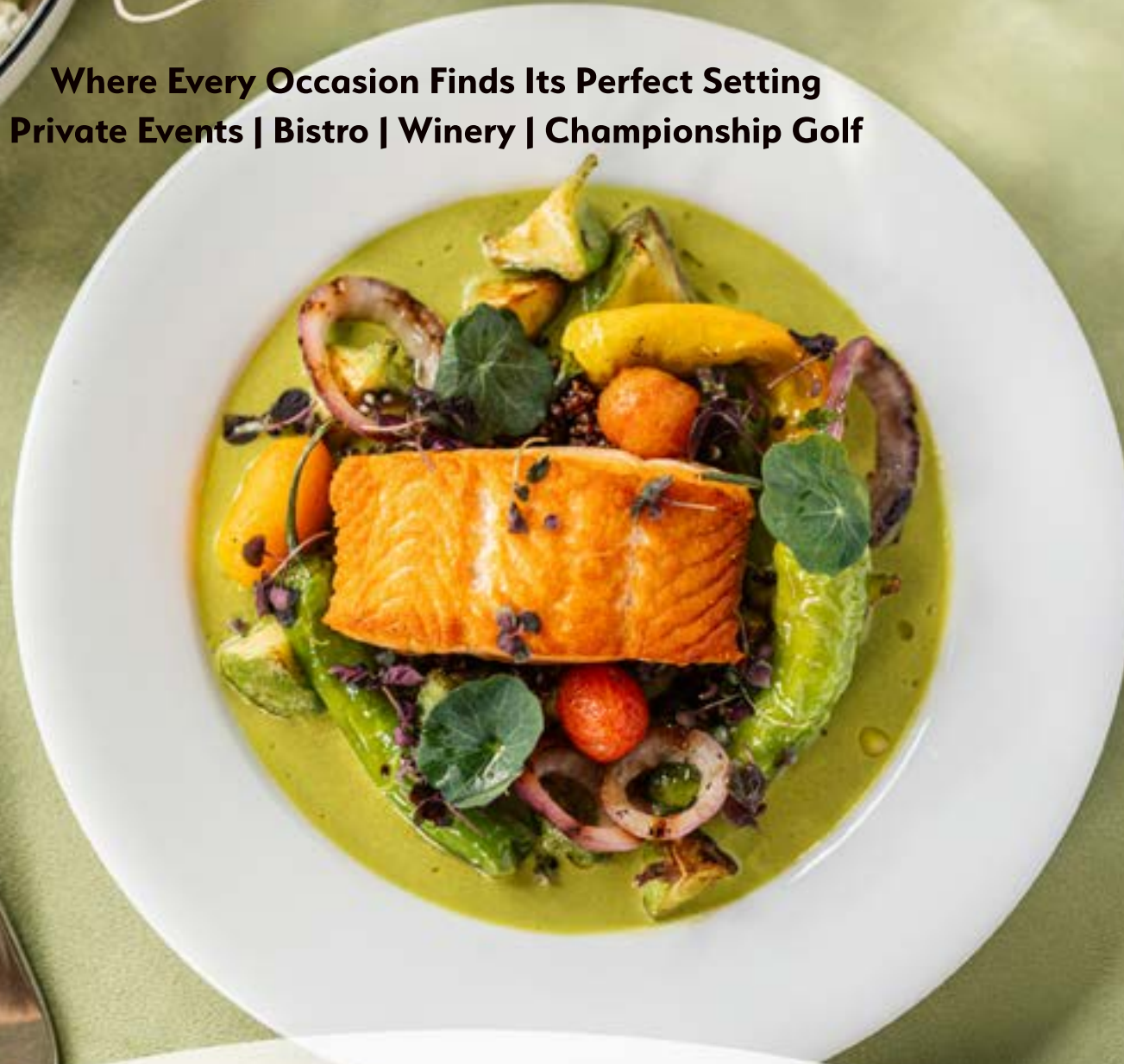
SUNFLOWERS AT MCKEE-BESHERS WILDLIFE MANAGEMENT AREA

Frolic through extensive sunflower fields and capture a naturally Instagrammable moment in Poolesville.



THE CROSSVINES

Where Every Occasion Finds Its Perfect Setting
Private Events | Bistro | Winery | Championship Golf



16601 West Willard Road, Poolesville, MD 20837
www.crossvines.com

WHAT'S HAPPENING

Discover more events and activities throughout the year by visiting VisitMontgomery.com/Events

JANUARY

New Years Eve Celebrations
Countywide

National Skating Month
Cabin John & Wheaton Ice Rinks

DC Winter Restaurant Week
Countywide

FEBRUARY

Black History Month
Josiah Henson Park & Woodlawn Museum
Countywide

FeBREWary in Maryland
Countywide

Lunar New Year Celebration
Rockville and Countywide

Mid Atlantic Jazz Festival
Bethesda

Screen Valentines: Great Movie Romances
AFI Silver Theatre and Cultural Center

Savor Bethesda Restaurant Week
Bethesda

MARCH

Local Writers Showcase
Bethesda

Maryland Wine Month
Countywide

Cherry Blossom Season
Countywide

St. Patrick's Day Parade & Celebrations
Countywide

APRIL

MCPL Rang Aur Patang Utsav
Black Hill Regional Park

Countryside Artisans Studio Tour
Agricultural Reserve

Greenfest
Brookside Gardens

National Park Week
C&O Canal National Historical Park

The Butterfly Experience: Live Butterfly & Caterpillar Exhibit (April–September)
Brookside Gardens

MAY

Bethesda Fine Arts Festival
Bethesda's Woodmont Triangle

Canal Community Days
Great Falls Tavern Visitor Center

Go MoCo Month
Countywide

Gaithersburg Book Festival
Gaithersburg City Hall

Hometown Holidays/Memorial Day Parade
Rockville

Poolesville SpringFest
Whalen Commons

Rockville Arts Festival
The Square Rockville

JUNE

AFI Docs Film Festival
AFI Silver Theatre and Cultural Center

Heritage Days
Countywide

Juneteenth Celebrations
Countywide

Pride Events
Countywide

Strawberry Festival
Sandy Spring Museum

World Heritage Festival
Silver Spring

JULY

Farm Tour and Harvest Sale
Countywide

Independence Day Parade & Fireworks
Countywide

National Recreation & Parks Month
Countywide

Summer Concert Series
Countywide

AUGUST

Butler's Orchard Sunflower Spectacular
Germantown

Ukefest
The Music Center at Strathmore

Maryland Tax Free Week
Countywide

Montgomery County Agricultural Fair
Gaithersburg

DC Summer Restaurant Week
Countywide

SEPTEMBER

AFI Latin American Film Festival
AFI Silver Theatre and Cultural Center

International Underground Railroad Month
Countywide

Labor Day Parades
Gaithersburg and Kensington

Maryland Restaurant Week
Countywide

Poolesville Day Festival
Whalen Commons

Silver Spring Jazz Festival
Silver Spring

OCTOBER

Antique and Classic Car Show
Rockville Civic Center Park

Countryside Artisans Studio Tour
Agricultural Reserve

Markoff's Haunted Forest at Calleva
Dickerson

Oktoberfest
Countywide

Silver Spring Zombie Walk
Silver Spring

Takoma Park Street Festival
Main Street Takoma Park

Taste of Bethesda
Woodmont Triangle

Washington Folk Festival
Glen Echo Park

Washington DC South Asian Film Festival
Silver Spring

NOVEMBER

Maryland Emancipation Day Celebrations
Countywide

Montgomery County Thanksgiving Parade
Silver Spring

Winter City Lights
Olney

DECEMBER

Countryside Artisans Studio Tour
Agricultural Reserve

Washington, D.C. Temple Festival of Lights
Kensington

Garden of Lights
Brookside Gardens

Holiday Tree Lightings
Countywide

Winter Lights Festival
Seneca Creek State Park



JANUARY- FEBRUARY

As over 15% of Montgomery County residents are Asian American, Lunar New Year is an important part of our community. The **City of Rockville's Lunar New Year Celebration** features cultural performances, interactive displays, activities for kids, and to-go bento boxes. There's also an annual **Lunar New Year Celebration at Westfield Montgomery**. Head over to the **Gaithersburg Community Museum** for drop-in activities. The family-focused celebration at Chevy Chase Library has bilingual English and Chinese stories, Chinese dancing, and crafts.

APRIL

Washington, D.C.'s famous **cherry blossoms** are the region's first sign of spring. Venture beyond The Tidal Basin and take a cherry blossom tour of Montgomery County in full bloom. The **Kenwood** neighborhood between **Bethesda** and **Chevy Chase** has more than 1,200 cherry trees and is a less crowded alternative to downtown D.C. Appreciate **Takoma Park's** cherry trees while you wander the historic town, or enjoy a picnic under a Yoshino cherry tree with a view of **Glenview Mansion** at the **Civic Center Park** in Rockville, or get a pondside blossom view at **Brookside Gardens**, and **The Manor at Silo Falls** features an extensive collection of cherry blossom trees lining their driveway.

MAY

During Go MoCo Month, experience four weeks of all things Montgomery County. These include **Shop MoCo Week**, **MoCo Hotel Week**, **MoCo Eats Week**, and **Kick Off to Summer**. May is also **National Travel & Tourism Week**, **National Bike Month**, and **Asian American & Pacific Islander Heritage Month**.

JUNE

Montgomery County is a great place for you and your family to celebrate **Pride Month!** Many local establishments and groups—including **White Oak Community Recreation Center**, **Arts Barn**, and **Aspen Hill Library**—host events supporting the **LGBTQ+ community**. The City of Rockville holds an annual **Pride Celebration** at Rockville Town Square Park, and Takoma Park presents its fun-filled **Takoma Pride Day**. Full of performances by local artists, pop-ups from local businesses and free HIV testing, **Pride in the Plaza** at Veteran's Plaza in Silver Spring is another large celebration. The fun continues with **Pride Family Day** at Glen Echo Park, and **MoCo Pride Youth**—the public school district's LGBTQ+ student affinity group, hosts a picnic for all youth and allies, no matter what school you attend.

SEPTEMBER- OCTOBER

We're all German during Oktoberfest, and Montgomery County is full of festive events. Check out **Silver Branch Brewing Co.** in Silver Spring or join in the fun at **PIKEtoberfest** at Pike + Rose in North Bethesda. Rockville entertains with **Rocktoberfest** at The Square Rockville and celebrations at **7 Locks Brewing**. The City of Gaithersburg hosts its gathering at **Bohrer Park at Summit Hall Farm**. And UpCounty goes all in on their harvest heritage with revelries including **Needwood Golf Course's beer garden**, **Montgomery Parks' ale trail** at **Rock Creek Regional Park**, and a party at **The Comus Inn**.

NOVEMBER- DECEMBER

Montgomery County is a flurry of activity during the holiday season! From the **Thanksgiving Parade** in Silver Spring to the four major holiday lights displays, there are tons of things to do and see. Not to mention all the shopping events, restaurant celebrations, and other experiences the winter brings!

FREE THINGS TO DO ALONG THE RED LINE

You don't have to spend a dime to have a good time in Montgomery County.

○ SHADY GROVE STATION

As the last stop on the western side of the county, this station serves as a hub to connect you to Montgomery County's rural areas via the Ride On bus system. Walk a couple of minutes down Redland Road to **Crabbs Branch Stream Valley Park**, an undeveloped nature reserve that provides opportunities for quiet enjoyment of the natural environment. Take a short Uber or Lyft ride to **rio** in Gaithersburg. Stroll the boardwalk and enjoy free concerts with views of the lake.

○ ROCKVILLE STATION

The Square Rockville is steps from the Metro and has tons to see. Besides the shops and restaurants, the photogenic **Rockville B&O Railroad Station** was built in 1873 and has been lovingly preserved. The historic **Red Brick Courthouse** is nearby, situated in a grassy park and features a museum. A short ride will lead you to **Rockville Civic Center Park**, which is filled with things to see and do among the walking trails. **Croydon Creek Nature Center** has nature

exhibits, a small library and a watershed diorama of the Rockville area. Built before, during, and after the Civil War, **Glenview Mansion** hosts events year-round. Venture to **Red Gate Park** for a nature walk. There's also an epic sledding hill for snowy days!

○ TWINBROOK STATION

Enjoy an easy 10-minute walk for shopping and dining at **Congressional Plaza**. Take a stroll along the **Bethesda Trolley Trail**.

○ NORTH BETHESDA STATION

Take a leisurely 10-minute stroll up Rockville Pike to **Pike & Rose**. This eclectic shopping center features a wide variety of boutiques and retail stores where you can window shop and enjoy free concerts in warm weather. The **Pike District Pop-Up Park** is a perfect place for a relaxing yoga session or salsa lessons, hosted all summer long.

○ GROSVENOR-STRAETHMORE STATION

Summertime is the best time to visit **The Music Center** and

Mansion at Strathmore for free! Enjoy free concerts at the venue's Gudelsky Gazebo, including a series just for kids. Strathmore also features an outdoor Sculpture Garden that all ages will appreciate exploring. A 5-minute Uber ride from the Metro will take you to the **Ratner Museum**, a private gallery filled with sculptures and art with a concentration on Jewish culture.

○ MEDICAL CENTER STATION

This station exists to serve the massive campuses of the National Institutes of Health (NIH) and Walter Reed National Military Medical Center. Bring your bike, or rent one from a **Capital Bikeshare** kiosk, and take a ride into Bethesda along the **Bethesda Trolley Trail**.

○ BETHESDA STATION

You don't have to go far to reach new heights at Bethesda Station, which features the second longest escalator in the Western Hemisphere. At 212 feet long, this ride will rival some theme parks. Steps from the Metro is the **Waverly**

Street Gallery, where you can window shop contemporary art works by a collective group of artists. If you're a young fan of the arts, **Round House Theatre's** Free Play program is for you! The program allows all students ages 13 through college to attend for free with a valid school ID. Take a stroll and window shop at **Bethesda Row** or take a self-guided tour on the **Bethesda Circulator**. Looking for a more nature-centric experience? Take a 10-minute Uber ride to the **Woodend Sanctuary** in Chevy Chase. Experience this private retreat with hiking trails full of wildlife and of course, birds. Indoor displays educate visitors on the Society's bird-related work.



GLENMONT



WHEATON



FOREST GLEN



SILVER SPRING



TAKOMA



○ FRIENDSHIP HEIGHTS STATION

A 5-minute walk up Western Avenue leads you to **Western Grove Urban Park**, a protected 2 acres, featuring a natural landscape. Use the human sundial, watch the ornamental water feature, or climb the natural play space.

○ GLENMONT STATION

For a don't-miss experience, walk 20 minutes to the remarkable **Brookside Gardens**. Meander under the wisteria walkway, take in the rose garden, turtle-watch along a lake with a Japanese-style pavilion, or puzzle through the labyrinth. The Brookside Nature Center has

exhibits and displays on animals that are native to the area.

○ WHEATON STATION

Westfield Wheaton Mall, adjacent to the Metro, is a fantastic indoor venue on a blisteringly hot or rainy day. Or take a 10-minute Uber ride to **Wheaton Regional Park**. It's a great place for a picnic and features seasonal activities like baseball, ice skating, and even a mini train for little explorers.

○ FOREST GLEN STATION

If you're in the mood for a walk, it's 20 minutes to the **National Museum of Health and Medicine**. Plan to spend 1-2 hours exploring this fascinating venue, which was established during the Civil War as the Army Medical Museum. Shop for antiques and vintage items at **Kensington Antique Row**. If a walk is a no-go, hail an Uber from the Metro station for a 5-minute ride to the **Washington D.C. Temple & Visitors Center** to explore the exhibits and enjoy family-friendly events.

○ SILVER SPRING STATION

Steps away from the Metro is a one-room exhibit presented by the National Oceanic and Atmospheric Administration (NOAA). The **Gateway to NOAA** is a great place to learn about the earth and its atmosphere. Farther along, **Downtown Silver Spring** is a vibrant shopping area. On the far side of the mall, check out Veterans Plaza—host to a full schedule of activities and festivals that celebrate the diverse cultures of the county's residents. In the winter, people-watch as ice skaters spin and glide on the outdoor rink.

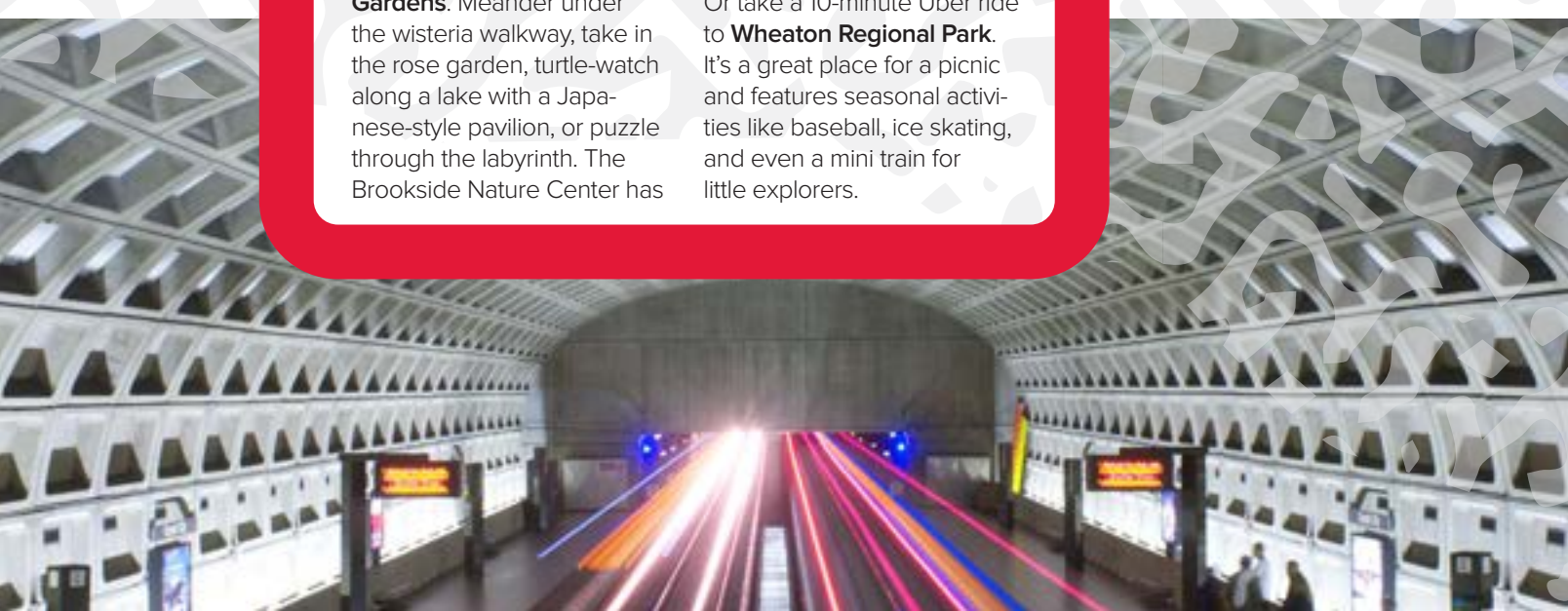
○ TAKOMA STATION

On a clear Sunday, walk 5 minutes up Carroll Avenue to the **Takoma Park Farmer's Market**. Explore the vendors selling beautiful flowers, fruits, vegetables, bread, honey, cheeses, even locally-made whiskey. This community staple runs year-round. Take a stroll and meet with local merchants along Takoma Park's Main Street.

wmata.com

Information: 202-637-7000

TTY: 202-962-2033



UNEARTH MoCo's RURAL SIDE

► THE CROSSVINES

Ever heard of “agritourism?” The idea of inviting visitors to explore rural spots isn’t new, but it is evolving.

Elegant restaurants serve gourmet food and glamorous drinks among stunning vistas that feel a world away from the city life. Historic venues charm guests with farm-to-table menus proudly supporting local growers and artisans. Tourists travel far and wide to create memorable experiences in picturesque locations.

Montgomery County is home to a surprising number of rural areas. In 1980, the Montgomery County Council created an Agricultural Reserve, or what the locals call the “Ag Reserve.” Heralded as one of the best examples of land conservation policies in the United States, the Agricultural Reserve encompasses 93,000 acres—almost a third of the county’s land resources. With 540 farms and 350 horticultural enterprises, agriculture contributes over \$287 million to the county’s economy annually.

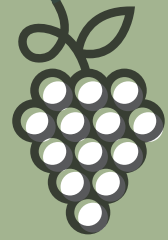
SEE + DO

Top of visitors’ “must see” lists is the sunflower fields at **McKee-Beshers Wildlife Management Area** in Poolesville. Sunflowers are planted by hand each year to attract game birds, and peak blooms typically occur in July. The scenic 455-acre **Agricultural History Farm Park** in Derwood features rolling hills, open fields, an apple orchard, and a variety of farm animals. Get a unique perspective on the county’s rich farming heritage while visiting barns, historic buildings, a modern farming activity center, and other facilities at the park. The **King Barn Dairy MOOseum** is dedicated to interpreting the rich history of the farms,

families, and related organizations of Montgomery County. Their stories are told through a permanent collection featuring interactive exhibits and educational programs. For spectacular countryside views, hike to the summit of **Sugarloaf Mountain**. There you can look out over the county’s pastoral patchwork of farms and villages—a scene largely unchanged since the 19th century.

EAT + DRINK

Enjoy a sumptuous meal outdoors in Brookeville at **The Manor at Silo Falls**, a rustic-yet-chic former dairy farm that serves fresh seasonal menus and handcrafted cocktails. **The Comus Inn** boasts unequalled panoramic views, sweeping landscapes,



YOUR WEEKEND COMES ALIVE AT THE CROSSVINES

Montgomery County’s rural venture is adding an educational twist to the agritourism offerings. Named after a climbing vine native to Maryland, **The Crossvines** is an accessible escape that offers a closer-than-you-think destination. The venture impressively intertwines Maryland’s rich farming history, the local winemaking industry, and investment in the local economy—all in a tranquil, nostalgic retreat.

Escape to the Countryside

Get away to a tranquil escape for weekenders and day-trippers alike that features stunning grounds and gardens to explore. Plus, **The Golf Course at The Crossvines** entices visitors with almost 7,000 yards of championship golf and waterfront views across two scenic lakes.

Eat, Drink, and Be Merry

Appreciate Maryland’s classic hospitality in a picturesque destination. The Crossvines is home to a **chic artisanal bistro** that acts as a catalyst for connecting visitors to local farmers and producers. Guests can also enjoy a sunny afternoon picnic at the winery and enjoy samplings of local blends.

Learn About Winemaking

The Crossvines is an educational gateway that offers space, equipment, and services for students and local growers to **learn about the winemaking process** and produce their own wines. Coordinated by the University of Maryland Extension, rolling acres of demonstration vineyards help teach vineyard management skills while providing quality grapes to support the industry. A custom crush facility processes grapes from the region’s growers, both large and still developing.

Gather Together

Toast to new beginnings, celebrate milestones, and build community at The Crossvines. The property offers **stunning, thoughtfully designed venue options** for private events, weddings, and corporate gatherings, including a spectacular outdoor wedding venue and a 250-seat banquet hall. The distinctive celebration of your dreams awaits!



and historic charm on 5.26 stunning acres at the base of Sugarloaf Mountain. Enjoy local brews and live music in the beer garden.

SHOP + FIND

Visit **Butler’s Orchard** and other farms in the spring for pick-your-own strawberries, blueberries, and blackberries. In the fall, families head out to the local pumpkin patches and during the holidays, they cut fresh trees. Or relax at **Locals Farm Market**, where breakfast, lunch, bakery goods, and fresh produce are accompanied by handcrafted coffees and displays by local artists in a comfortable, community-focused setting.





▶ GLENSTONE MUSEUM

EXPERIENCE THE ARTS

Whether you're gazing at modern and contemporary art or creating your own masterpiece, there are a number of ways to satisfy your arts and culture cravings in Montgomery County.

APPRECIATE THE ART

Glenstone Museum is a free modern and contemporary art museum that seamlessly integrates art, architecture, and nature in a serene and contemplative environment on nearly 300 acres. Visitors must be 12 or older to attend and visits can be scheduled online.

At **Sandy Spring Museum** it's all about the community. There, people can develop meaningful connections by exploring community history through the visual, literary, and performing arts. In recent years, the museum has

evolved from a traditional history museum into a dynamic, participatory cultural arts community center.

Members of the **Country-side Artisans of Maryland** jointly open their galleries and studios located in historic, rural Montgomery, Howard, and Frederick Counties for three art tours each year in April, October, and December. Spend a day in the country, enjoy scenic drives between studios, and meet artists. Come home with a renewed sense of well-being and a wonderful piece of local, original art!

CREATE YOUR OWN

Once an amusement park, **Glen Echo Park** is a historical site that is now home to many arts and cultural organizations and programs. There are 13 resident artists and arts organizations, a thriving social dance program, numerous art studios and galleries, and hundreds of classes in visual and performing arts. Children especially love the nature program, two award-winning children's theaters, the weekend drop-in art program, and riding the restored 1921 Dentzel Carousel.

The **KID Museum**, in Bethesda, is an innovative learning space unlike any other in the Washington, D.C. metro region. The museum provides impactful hands-on learning that incorporates



▶ GLEN ECHO PARK

STEM, art, and culture with 21st Century skills like creativity and critical thinking.

Founded in 1987 as a grassroots organization serving local artists, **VisArts** is located in the heart of downtown Rockville. They provide children, teens, and adults with opportunities to express their ideas and develop their talents through art classes, exhibits, and innovative programs.

Exciting **LIVE** Theatre!



JANUARY 9 - MARCH 15, 2026



MARCH 20 - JUNE 7, 2026



JUNE 12 - AUGUST 23, 2026



AUGUST 28 - NOVEMBER 1, 2026



NOVEMBER 6 - JANUARY 10, 2027



COLUMBIA, MARYLAND

410-730-8311



TOBYS DINNER THEATRE.COM

Convenient to BALTIMORE & WASHINGTON, DC

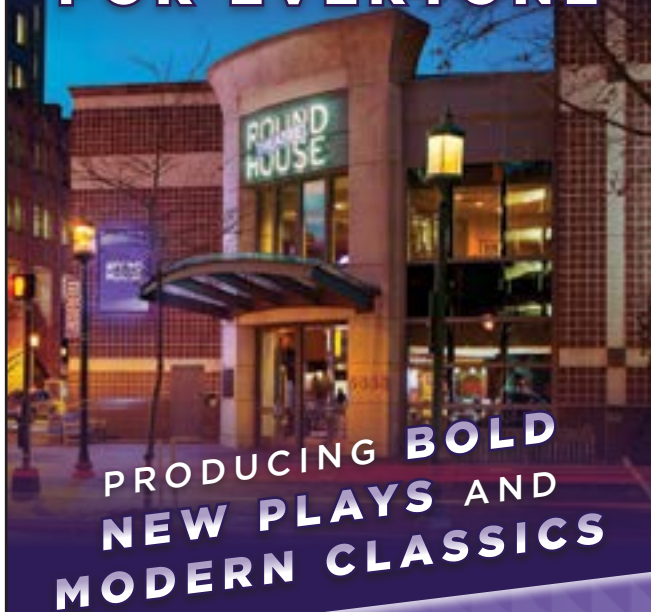
EXPLORE
**BETHESDA
& BEYOND**
RENTAL ~ TOURS

BOOK NOW >>>

Explore the city in eco-friendly style with our eBike rentals and guided tours – electrify your adventure today!

240.800.3154
WWW.PEDEGOBETHESDA.COM

ROUND HOUSE THEATRE **A THEATRE FOR EVERYONE**



PRODUCING **BOLD
NEW PLAYS AND
MODERN CLASSICS**

Located in Downtown Bethesda
RoundHouseTheatre.org
240.644.1100

Experience art,
architecture, and nature.
Always free.



Glenstone

Learn more at glenstone.org



▶ SUMMERFEST

PERFORMANCES + ENTERTAINMENT

While many view the Washington, D.C. metro region as the center of world politics, it is also a cultural hub for musicians and performers. Montgomery County offers an exceptional range of world-class performance and entertainment venues for all ages.

MUSIC + ENTERTAINMENT

High-quality arts programming, served with the hospitality and warmth of a family enterprise, are the hallmarks of **The Music Center and Mansion at Strathmore**. The 1,976-seat theater regularly hosts favorites like the National Philharmonic Orchestra and the Baltimore Symphony Orchestra. **The Mansion at Strathmore** hosts smaller performances and private collections. Walk the elaborate Sculpture Gardens, enjoy tea in the **Strathmore Tea Room**, or catch a music festival on the front lawn.

The Fillmore Silver Spring brings a dynamic, first-class music and entertainment venue to downtown Silver Spring. With a capacity of 2,000, The Fillmore features an array of diverse live music programming. In Gaithersburg, **Boardwalk Stage** is located along rio's lakefront and features Friday night concerts in the summer.

The **American Film Institute (AFI) Silver Theatre and Cultural Center in Silver Spring** is anchored in the restored 1938 Silver Theatre, creating a classic feel to the films and movies shown



within its walls. AFI examines the significance of films, while showing filmmaker interviews, discussions, and other events, making the films a true centerpiece.

THEATER PERFORMANCES

Recalling the charm of a bygone era, the **Arts Barn** is a beautifully renovated

stable that once housed horses on the former Tschiffely Estate. Today, the Arts Barn is part of **Arts on the Green**, the City of Gaithersburg's home for visual and performing arts, including a 99-seat theater. In nearby Germantown, the **BlackRock Center for the Arts** presents performances featuring top



► AFI SILVER THEATRE AND CULTURAL CENTER



regional, national, and international touring talent.

Olney Theatre Center offers a diverse array of professional productions year-round that enrich, nurture, and challenge a broad range of artists, audiences, and students. One of two state theaters of Maryland, the center is situated on 14 acres in the heart of the beautiful Washington-Baltimore-Fredrick “triangle,” within easy access of all three cities.

Round House Theatre is a home for outstanding ensemble acting and life-long learning. Known for its adventurous programming and deep investment in local talent, Round House has become a premiere destination for the serious theater en-

thusiast in the Washington, DC region. Located in Bethesda, **Imagination Stage** offers year-round professional theater shows as well as classes and camps for toddlers, children, and young adults.

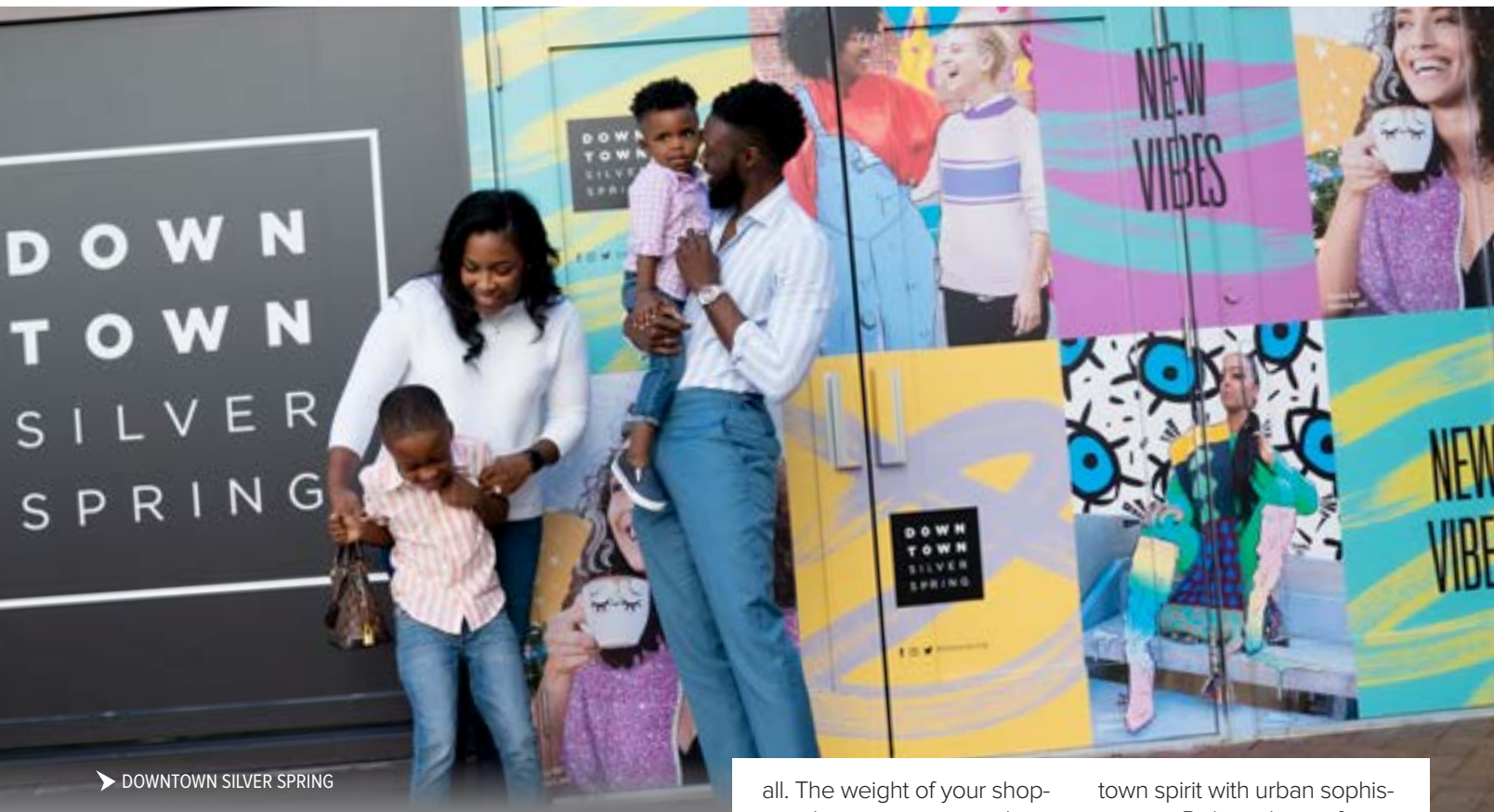
The F. Scott Fitzgerald Theatre is a vibrant, local theatre in Rockville at Civic Center Park. Dedicated to the performing arts, this 446-seat theatre boasts over 100 shows a year. Experience a captivating musical by the **Rockville Musical Theatre**, become moved by the Victorian Lyric Opera Company, or lose yourself in the spellbinding **Rockville Civic Ballet**.



► ROUND HOUSE THEATRE

MARYLAND ARTS + ENTERTAINMENT DISTRICTS

Maryland is one of the first states in the country to develop Arts and Entertainment Districts on a statewide basis. These districts help develop and promote community involvement, tourism, and business revitalization through tax-related incentives that attract artists, arts organizations, and other creative enterprises. Montgomery County is home to three (out of 26) Arts and Entertainment Districts: Wheaton, Silver Spring, and Bethesda. Each district offers a wide range of arts and humanities organizations, popular arts venues, festivals, entertainment businesses and more.



► DOWNTOWN SILVER SPRING

SHOPPER'S PARADISE

From handmade jewelry to designer shoes, antique statement pieces to stylish handbags, Montgomery County has been dubbed a “shopper’s paradise” by local and metropolitan residents alike. Whether you’re a trendsetting fashionista or a sartorial bargain hunter, we have a variety of shopping destinations that suit any style and budget. There are numerous downtown centers, malls, and outlets filled with delicious bites, superb shopping, community events, and fun for the whole family. Most of these are also Metro-accessible!

Making up 12.5-acres in the heart of the city, **The Square Rockville** is a vibrant combination of public services, retail, and dining. Grab brunch at the restaurant **First Watch**, enjoy a pint or two at **Finnegan’s Wake**, or indulge in

Chinese-style Asian fusion-specialties at **MaLa Canteen**.

Get to know **Bethesda Row** this season and shop indie boutiques. Well-known brands **Sassanova**, **Lululemon Athletic**, and **Blue Mercury** are in the heart of it

all. The weight of your shopping bags is sure to work up an appetite worthy of a break at nearby **Mon Ami Gabi** or an indulgence at **Georgetown Cupcakes**.

Step into another world with the crème de la crème of stores at **The Collection at Chevy Chase**. This area is home to the only **Tiffany’s** and **Saks Fifth Avenue** in Maryland!

Designated as one of 23 “Main Streets” by the State of Maryland, **Main Street Takoma Park** offers a small-

town spirit with urban sophistication. Pick-up the perfect candle at **Tabletop** or a beautiful stained-glass lantern at **The Covered Market**. And you can even learn about Roscoe—Takoma’s neighborhood mascot.

If you’re looking for a festive big city vibe, make sure to check out **Downtown Silver Spring**. Home to familiar retail shops including **H&M**, **LOFT by Ann Taylor**, and **DSW**, you’ll find this season’s hottest trends at affordable prices. At night, **Ellsworth**



► CLARKSBURG PREMIUM OUTLETS

Place comes alive with lights so bright you will feel like you're in Times Square.

Westfield Wheaton Mall brings shoppers the best retail destinations in major cities by integrating food, fashion, leisure and entertainment.

Besides delicious food, **iPic Movie Theater**, and fun bowling at **Pinstripes**, the **Pike & Rose** neighborhood is also a shopper's delight. Discover your next best-fitting pair of jeans at the **GAP**. Get built-to-last outdoor gear at **REI** or **L.L. Bean**. Find top-of-the-line cookware at **Sur La Table** and home décor at **West Elm**.

In Gaithersburg, **rio Lakefront** is a carefully planned mix of retail, restaurants, and experiences. Once you've shopped to your heart's content at shops like **White House Black Market** and

Locally Crafted, you can enjoy a movie at the **AMC Dine-In Theater** or go paddleboating on the lake. There's even a carousel for the kids!

The town of Kensington is full of art galleries, music venues, enticing restaurants, and eclectic gift shops. If you're looking for unique treasures from times past, head to **Kensington Antique Row**. Located on Howard Avenue, the building hosts vendors and booths selling everything from glassware and books to furniture and clothing.

The ultimate bargain hunters will enjoy visiting **Clarksburg Premium Outlets**. The 96 outlet stores range from fast fashion to luxury brands. No matter your age or style, you'll find the right fit in Clarksburg.

ENTREPRENEURIAL SPIRIT

Montgomery County's inherent entrepreneurial spirit offers a wide range of local shops featuring eclectic treasures and unique finds. Here are a few creative favorites to include on your weekend getaway itinerary.

Artisans Gallery
12147 Darnestown Road
Gaithersburg

The Blue House
7833 Woodmont Avenue
Bethesda

The Cottage Monet
36 Maryland Avenue
Rockville

The Family Room
6820 Olney Road
Laytonsville

Joyful Bath
5534 Wilkins Court
North Bethesda

Red Orchard
10259 Old Georgetown Road
Bethesda

Shafa Blends
1327 Rockville Pike
Rockville

SW7
3750 Howard Avenue
Kensington

Tabletop
6927 Laurel Avenue
Takoma Park



Come Experience What's New

Featuring spacious guestrooms and newly renovated public and meeting spaces, Hilton Garden Inn Bethesda Downtown offers guests convenience and comfort.

Just steps from the Metro and access to DC, and Bethesda Row's shops and dining nearby to explore.



Hilton Garden Inn Bethesda Downtown

7301 Waverly St, Bethesda MD 20814

301-654-8111 | 1-877-STAY HGI | bethesda.hgi.com

TOWER OAKS LODGE

Raise a Shell to
OYSTER HAPPY HOUR
Daily 3-6pm & Late Night 10-11:30pm

HALF DOZEN OYSTERS...15^{.99}
DOZEN OYSTERS...27^{.99}
DISCOUNTED SEAFOOD PLATTERS

2 PRESERVE PARKWAY, ROCKVILLE, MD | 301-294-0200 | CLYDES.COM



► JOSIAH HENSON MUSEUM AND PARK



PRESERVING HISTORY

Montgomery County, founded in 1776, has prioritized preserving and sharing its history and those of its communities. History buffs will delight in seeing the past come to life at these publicly accessible historical attractions in the county.

HISTORICAL PARKS

Experience 1800s Maryland at **Woodlawn Manor Cultural Park** in Sandy Spring. Interactive exhibits tell the story of the earliest residents of the community. While there, walk the **Underground Railroad Experience Trail** and imagine what it was like to be a freedom seeker. The nearby **Sandy Spring Museum**—a Regional Folklife Center—connects diverse communities through experiences of the region’s cultural heritage.

In Derwood, see the past, present, and future of local farming at the **Agricultural History Farm Park** including the **Magruder-Bussard Farmstead**.

LOCAL + NATIONAL MUSEUMS

The **Gaithersburg Community Museum**, located in the B&O Rail complex, features hands-on learning centers for children and exhibits that explore the area’s rich history.

The 1815 **Beall-Dawson House** has retained most of its original architecture and serves as a museum of 19th Century life.

At the **National Capital Trolley Museum** in Colesville, explore exhibits and even ride an antique streetcar through **Northwest Branch Park!**

Home of the bullet that killed Abraham Lincoln, the **National Museum of Health and Medicine** in Silver Spring

focuses on the history of military medicine and displays thousands of artifacts dating back to the Civil War.

Montgomery County’s heritage museum, the Josiah

Henson Museum and Park offers visitors a powerful look into the life of Rev. Josiah Henson and the history of the era in Maryland. Through immersive exhibits and storytelling, the museum sheds light on Henson’s legacy while exploring the broader and continuing struggle for racial equality in America.



► NATIONAL CAPITAL TROLLEY MUSEUM



EXPLORE! DISCOVER! ENJOY!



Montgomery County's Heritage Area

Everything you want to do is right here, minutes from home!

Our destinations highlight our diverse heritage and cultures – nearly 100 museums offer stories around the county, from the Underground Railroad to dairy farming, to trolley history, just to name a few. Over 400 parks provide endless opportunities to hike, bike, kayak, or just unwind.



The Agricultural Reserve showcases 93,000 acres of preserved landscapes, farms, farmer's markets, vineyards, historic barns and small towns.

So come on out and explore our miles of trails, Scenic Byways, and Rustic Roads! Discover our museums and historic sites! Enjoy a getaway close to home! To plan your trip, check out our website HeritageMontgomery.org and our destination videos on YouTube.



HERITAGEMONTGOMERY.ORG

THE PERFECT WEEKEND GETAWAY FOR HISTORY LOVERS

If you're a history lover, get ready to pack your bags because we have the perfect weekend itinerary for you! From having lunch at a tollhouse to strolling through a once-beloved theme park, there are so many different and exciting ways to experience all of the wonderful historical sites Montgomery County, Maryland has to offer.



▶ LOCKHOUSE 21 "SWAINS"



▶ GREAT FALLS TAVERN VISITOR CENTER



▶ THE COMUS INN

DAY 1

Live like a lockkeeper in the early twentieth century at the **Swains Lockhouse**. Located right on the Potomac River, the lockhouse has everything you need for a memorable weekend including furnished early-1900s style rooms and vibrant views from the windows.

After you've settled in, wander around **Great Falls Tavern Visitor Center** and learn about what once was a gathering place for American Indians. While you're there, take a tour led by a Park Ranger or explore solo via a phone tour. Afterward, get lost in all that **C&O Canal National Historical Park** has to offer, like the roaring **Great Falls**, scenic views from the **Billy Goat Trail**, or kayaking down the river.

The Old Angler's Inn more than a century old restaurant, is a

Maryland favorite. Enjoy fine dining or casual fare in the garden.

Start winding down by strolling through **Glen Echo Park**, a former amusement park that operated from the early 1900s to the 1960s. Ride on the iconic Dentzel Carousel, which was originally installed at the park in 1921 and continues to be a national treasure.

DAY 2

Start your second day at the **National Capital Trolley Museum**, where you'll learn the history of trolleys, streetcars, trains, and more. Next, head to the **Thomas Harper Cabin**, a log cabin built in 1870 in Jonesville, a community formed by freed slaves. The Harper family of 10 lived in the cabin, which had a hen house, smokehouse, hog pen, fruit trees, and vegetable garden in the backyard.

Relax and unwind by having a meal at **Zinnia** in Silver Spring. What once was a place where travelers would stop and pay a fee before entering a privately-owned road is now the last tollhouse in the county. You'll come for the rich history, beautiful antiques, and cozy atmosphere, but you'll stay for the delicious homecooked meal.

After your lunch, step back in time and learn about the African Diaspora, civil rights, and more at the **Sandy Spring Slave Museum & African Art Gallery**. Then experience history firsthand at **Woodlawn Manor Cultural Park's Underground Railroad Experience Night Hike**. The guided hike follows a path that freedom seekers might have taken to the North.

DAY 3

Have some lunch at **The Comus Inn**, a historical building complex located at Sugarloaf Mountain. Enjoy made-to-order dishes and special wine selections to enhance your dining experience. This quaint and romantic restaurant will have you coming back for more.

End the day by walking across **The Monocacy Aqueduct**, the longest aqueduct on the C&O Canal National Historical Park. The Monocacy Aqueduct was frequently attacked during the American Civil War because war materials and troops were often transported there. Despite the attacks from the Confederate soldiers, The Monocacy Aqueduct was never destroyed and now stands as an "icon of American civil engineering" preserved by the C&O Canal Trust.

61 VINEYARD

Come for the Wine, stay for the Sunset!

Enjoy our award winning wine and warm hospitality on our on farm winery in the Agricultural Reserve.

Open Thursday thru Sunday

28712 Kemptown Road, Damascus, MD

find us: Facebook and Instagram @61vineyard



 **Hilton**
Garden Inn



High value, quality hotel rooms for business and leisure travelers on the go.

- Welcoming Lobby and Lounge
- Complimentary Wi-Fi Internet & Parking
- Heated Indoor Pool & Whirlpool
- Precor Fitness Center
- Kid's Entertainment Room
- Full Service Restaurant, Bar, and Outdoor Terrace
- 2,800 Sq Ft of Conference Space



RockvilleGaithersburg.HGI.com

14975 Shady Grove Road | Rockville, Maryland, 20850 | 240-507-1800

NOW SERVING: MARYLAND SPIRITS WITH A SENSE OF PLACE

JOIN US FOR COCKTAILS, TOURS, AND MORE ON THE FARM



@songdogdistilling | www.songdog.co
18100 Bucklodge Rd, Boyds, MD 20841

THE ULTIMATE ENTERTAINMENT DESTINATION



LUCKY X STRIKE
GAITHERSBURG



SCAN HERE
FOR MORE INFORMATION

1101 CLOPPER RD, GAITHERSBURG, MD 20878
LUCKYSTRIKEENT.COM

THE C&O CANAL EXPERIENCE

For nearly 100 years, the Chesapeake & Ohio Canal was a main transportation route and lifeline for communities along the Potomac River. Today, it endures as an incredible natural attraction filled with historical and recreational treasures for all ages.

► CYCLING ON THE C&O CANAL TOWPATH





▶ GREAT FALLS OVERLOOK

Located at the junction of nature and history, the 184.5-mile **C&O Canal National Historical Park** is the 8th most visited National Park in the United States. The **Great Falls Tavern Visitors Center** was an inn for people traveling along the canal where patrons could enjoy a home-cooked meal, dancing in the ballroom, and the fine hospitality of Lockkeeper Fenlon. Now, you can get a free ticket for a ride aboard the replica **Charles F. Mercer canal excursion boat**. Learn about the people who lived and worked along the canal

as park staff operate the canal locks and boat just as they would have in the 1870's.

The **Great Falls Overlook** is a must-see when visiting the park! There are three overlooks available to view the waterfalls and the Potomac River. The **Billy Goat Trail** is some of the best hiking Montgomery County has to offer, with three sections that are set for different skill levels. Located near the Visitors Center, the **Old Anglers Inn** is a popular restaurant featuring seasonal fare and a terrace beer garden.

The Canal Towpath is a

flat trail stretching the entire length of the park that hikers and cyclists traverse daily.

(The towpath intersects with the **Capital Crescent Trail** leading to Bethesda.) Along the way, you can visit many other sites. Heading South from the Visitors Center, **Mary's Wall** between Locks 17 and 16 is over 50 feet tall and one of the tallest dry laid walls still in existence. From the top of it, views of the Potomac Gorge are stunning.

Glen Echo Park is located across from Lock 7 on the canal and is a fascinating place to explore. Nearby, **The Irish Inn** serves up a traditional Irish pub experience. Next to Glen Echo, the **Clara Barton National Historic Site** tells the story of the nurse and Red Cross founder's life and mission. Near Lock 6, take a break and watch people navigate through the rapids and rocks at the **Canoe & Kayak Slalom Course**. (Interested in kayaking yourself? Check out **Calleva's** "Kayak the Monuments" excursion!)

Heading North from the Visitors Center, the scenery is spectacular. If you're interested in sleeping under the stars, there are **hiker/biker campsites** all along the towpath. At Lock 24, venture off the towpath to (carefully!) explore the ruins of Seneca Mill and Quarry. A few miles farther, you can stop for rations at **White's Ferry Store & Grill** and hear about the historic ferry operation. From there, you can ride along White's Ferry Road into the charming **Poolesville**, which was designated as an official "canal town" by the Canal Towns Partnership in 2020. At the north end of the county, take some time to enjoy **Dickerson Conservation Park**.

CANAL QUARTERS PROGRAM

Looking for a digital detox that will bring you closer to nature? The **Canal Quarters Lockhouse program**, managed by the C&O Canal Trust, provides guests the opportunity to step back in time and live like a lockkeeper for the night. Each of the seven historic lockhouses—with five in Montgomery County—are restored and furnished to reflect a different time period in the canal's rich history.



▶ LOCKHOUSE 22

Lockhouses 6, 10, and 21—aka "Swains"—offer a full amenity experience, including kitchens, bathrooms, electricity, heat, and air conditioning. For a rustic experience, lockhouses 22 and 25 are the perfect options for camping with a historic twist. Most lockhouses include fire rings for roasting marshmallows and historic nuggets are displayed throughout each lockhouse. All seven Canal Quarters lockhouses can sleep up to eight people. They have been used for romantic getaways (including some engagements and weddings!), family trips and reunions, girls' weekends, scout troop lodging, and a special place for celebrations. They book up fast, so be sure to reserve your date soon by visiting www.canalquarters.org/respite.



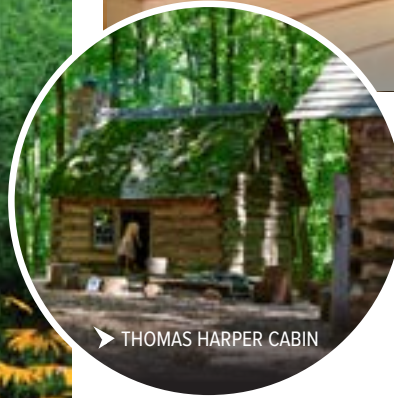
▶ GREAT FALLS TAVERN VISITORS CENTER



➤ BUTTON FARM LIVING HISTORY CENTER



➤ JOSIAH HENSON MUSEUM AND PARK



➤ THOMAS HARPER CABIN

AFRICAN AMERICAN HERITAGE

After the Civil War, many free Black communities were established in Montgomery County. Today, their legacy can be seen in the remains of places where people lived, worked, and raised families.

Josiah Henson Museum and Park was built on the former plantation where Rev. Henson was enslaved, the museum illustrates his life, enslavement in Maryland, and the ongoing struggles of racial equality.

From its beginnings in the 1890s, **Glen Echo Park**

was not strictly segregated, but starting in 1931 the park did not admit Black patrons. In 1960, 13 protesters were denied a ride on the historic carousel, five of whom were arrested for trespassing. Activists picketed for months amid counter-protests and

harassment, and in 1961 the park was open to all.

The **Button Farm Living History Center**, situated inside **Seneca Creek State Park**, depicts 19th Century plantation life when enslaved labor shaped the landscape. Unlike most passive museum visits, guests are invited to interact by cultivating crops, learning a trade, or lending a hand on the farm chores. While there, visit the ruins of **Black Rock Mill**, where men from local Black communities worked after the Civil War.

St. Paul Community Church in Sugarland Forest was purchased with a deed that specified the land be used for religious worship, a school, and burial site for people of African descent. Martinsburg—one of the rare, racially integrated Black settlements in the county—retains the three anchor buildings of the community: a church, school, and benefits society hall that are now

known collectively as **Warren Historic Site**.

The **Edwards Ferry Lockhouse** on the C&O Canal sits where a ferry ran across the river to Virginia. Records show that freedom seekers used the ferry, waterway, and towpath to flee north to Pennsylvania. You can learn more at **Woodlawn Manor Cultural Park & Underground Railroad Experience Trail**. While there is no evidence that this site was involved in the Underground Railroad, the trail was created to educate visitors about this important part of the county's history.

The **Red Brick Courthouse** saw many cases involving African Americans' legal rights, but the previous building was where the Freedmen's Bureau worked with the courts to protect the rights of African Americans immediately following the Civil War. Meanwhile, the one-room **Boyd's Negro School** served as the only public school for African Americans in the area until 1936. The schoolhouse served students in grades 1-8, many of whom walked for miles to attend classes in the railroad town.



► MOVEMENT ROCKVILLE



► IFLY

FLIGHTS OF FANCY

To take your day to new heights, find your wings as you soar inside a wind tunnel at **iFly**, an indoor skydiving facility. This safe and stable experience takes place within a flight chamber in Gaithersburg and is realistic practice for flying. If you'd rather stay grounded, check out **Dream Aero**, an ultra-realistic flight simulator in Potomac. The cockpit is built to real-life specifications and a pilot instructor guides you through an immersive 3D experience that engages all your senses.

HEALTHY COMPETITION

For a competitive outing, **TopGolf** in Germantown is a top attraction for families, friends, colleagues—you name it! (Read more on page 51.) Or challenge your friends to intense laser tag games at **Shadowland Laser Adventures**. Is bowling more your style? **Lucky Strike Bethesda** is always serving up something fresh with a sporty menu and delicious cocktails. Enjoy premium bowling—including semi-private suites—and massive TV screens along with billiards and ping pong. If you're looking for a less traditional experience, gather at **Pinstripes** in North Bethesda. Enjoy the full-service Italian/American bistro food

and beverage menu while taking in the entertainment and excitement of bowling and bocce. And if sports just aren't your thing, head to one of two **Dave & Busters** in the county to play video games!

HIT THE ICE

Lace up your skates and learn from the pros at **Wheaton Ice Arena** or **Cabin John Ice Rink**. Attend lessons, clinics, and camps to strengthen your skills or rent either facility for a party. Both venues feature skate rentals as well as a pro shop for investing in your hobby.

CLIMB + JUMP

With thousands of feet of climbing terrain, **Movement Rockville** features extensive lead, top rope, and bouldering routes. The Rockville facility also offers indoor and outdoor climbing instruction, summer camps, and fitness training to prep anyone for the next level of climbing. Jump over to the active indoor park **ZavaZone** for 15 different attractions including trampolines, ninja courses, and ziplines. This adventurous, action-packed experience is fun for all ages. Or head to Gaithersburg's **SkyZone** trampoline park, where you can participate in freestyle bouncing, dodgeball, fitness programs, and more.

GO PLAY INSIDE

As much as we wish it was always sunny and mild, Montgomery County has a variety of indoor activities to keep you entertained—no matter the weather.



► DAVE & BUSTERS

HOLE IN ONE




Whether you're a hobbyist or ready for the U.S. Open, there are numerous golf experiences throughout Montgomery County that are well-suited for every interest and skill level.

Welcome to our golfer's paradise, with nine public golf courses across the county. Three courses lie in Silver Spring, just miles from the Capital Beltway. **The Hampshire Greens Golf Course** offers country club service and amenities at a daily fee price. This visually intimidating course challenges golfers of all skill levels and offers a choice of four sets of tees stretching from 5,048 yards to over 6,800 yards from the championship tees. At just under 7,400 yards, the championship tees at **Northwest Golf Course** provide the longest experience in Montgomery County. Designed by Ault & Clark in 1964, the 27-hole facility is popular with golfers of all abilities and features a driving range with a

total of 41 stalls. **Sligo Creek Golf Course** is a 9-hole course that will challenge the best of golfers. Although the terrain is hilly, many enjoy walking the course's park-like setting before visiting the pro shop and full-service snack bar in the clubhouse.

From the front door to the fairways, **Laytonville Golf Course** in Gaithersburg is one of the most fun and friendly courses you'll find. Superb course conditions, competitive pricing, convenient location and outstanding service make it an excellent choice for tournaments and outings. It also serves as the county's premier learning center for youth, offering clinics, specialized summer golf camps, and both individual and group lessons. **Needwood Golf Course** in

Derwood offers an 18 hole course that is challenging, very playable and well-conditioned. It also offers a 9 hole "executive course" that is an outstanding layout for the beginner or the experienced golfer looking to sharpen their short game. The practice area offers a driving range, putting and chipping greens. With four sets of tees, generous fairways, and large greens the **Falls Road Golf Course** in Potomac is friendly to beginners, juniors, women, and senior golfers. It has a great mix of holes: the front nine is a parkland type course and the back nine is more tree lined, which makes it fun for golfers of all abilities.

Take refuge from the hectic pace of Greater D.C. at **Poolesville Golf Course**. With two scenic lakes, and

almost 7,000 yards of championship golf, this course offers generous landing areas, and large rolling greens. It also maintains world-class practice facilities, including a 2-acre short game practice area, and a range with both grass and artificial teeing areas. For spectacular views while you golf, visit **Little Bennett Golf Course** in Clarksburg. The hilly course offers several scenic views of Sugarloaf Mountain and has continuous cart paths. Advance reservations are recommended, especially on weekends and holidays.

Wet conditions? Head to **Rattlewood Golf Course** in Mt. Airy for a well-drained, challenging course with an interesting variety of holes that offer tempting risk/reward opportunities. The 9th



- 1 Falls Road Golf Course
- 2 Hampshire Greens Golf Course
- 3 Laytonville Golf Course
- 4 Little Bennett Golf Course
- 5 Needwood Golf Course
- 6 Northwest Golf Course
- 7 Poolesville Golf Course
- 8 Rattlewood Golf Course
- 9 Sligo Creek Golf Course

➤ POOLESVILLE GOLF COURSE

hole—a lengthy Par 5 with strategically placed bunkers both in the fairway and flanking the green—paves the way for a dog leg finish into the 18,000 square foot clubhouse for your turn stop.

MINI GOLF

Whether it's a daytime visit or an evening out, a round of miniature golf at **Bohrer Park at Summit Hall Farm** in Gaithersburg is a fun activity for the whole family. The beautifully landscaped course features 18 challenging holes in a park setting. To combine a family outing with some water fun, head to the **South Germantown Mini Golf & SplashPark**. Designed with delicate contour changes, sloping greens, and natural obstacles, the

accessible 18-hole course will challenge golfers of all ages (including adults). Afterwards, kids will have an excellent time and stay cool playing in the one-of-a-kind 280-jet water maze, cave with a waterfall, water bucket drops, slide, and spraying animals.

DRIVING RANGES

Part of Montgomery Parks, South Germantown Driving Range operates year-round, features 33 elevated tees (10 covered), a putting green, and a sand bunker. The facility also includes a renovated Clubhouse with seating area, DirectTV, and a restroom. Or, elevate your game at Olney Golf Park's premier driving range, wedge range, and short-game complex.

SWING AWAY AT TOP GOLF

If you're looking for a unique golf experience for experts and novices alike, head to **Topgolf Germantown**. Enjoy an afternoon of competition, excitement, and great food and drinks. They've made socializing a sport through a blend of technology and entertainment—and that's just the game! If you journey through the venue on any given day, you'll find a place buzzing with energy. The open-air facility features dozens of climate-controlled hitting bays for year-round comfort. Plus you can watch your favorite pro golfers hit the links (or take in other sports and shows) with HDTVs in every bay and throughout the onsite sports bar and restaurant.

Amped to keep swinging? Visit the **Bethesda North Marriott Hotel & Conference Center** (across the street from Pike + Rose). Spend the evening enjoying an immersive social experience in your own comfy lounge with fantastic food and beverage service at the hotel's **Topgolf Swing Suite**. The private simulator bay and massive screen offers a variety of virtual games, including signature Topgolf target games zombie dodgeball, hockey, baseball, football, and carnival games. The overall experience delivers a one-of-a-kind simulation that's fun for golfers and non-golfers alike.



➤ TOPGOLF GERMANTOWN



► THE ADVENTURE PARK AT SANDY SPRING

OUTDOOR ADVENTURES

FLYING HIGH

Go Ape Zipline and Adventure Park is located inside **Rock Creek Regional Park** in Rockville and is home to six zip lines, numerous rope ladders, 44 crossings to include the Stirrups and Twister, two Tarzan swings, and America's first skateboard zip line. Another adventure awaits at **The Adventure Park at Sandy Spring**. The park consists of 13 different courses varying in degree of difficulty. Each trail has zip lines, but primarily consists of bridges between tree platforms made of rope, cable, and wood configurations, creating over 190 unique challenges. To catch air in a different way, visit **Rockville Skate Park**. Get a free membership

online to experience the 15,000-square-foot concrete skate park that features a kidney bowl, manual pads, quarter pipes, radius wedge, rainbow grind rail, grind ledge, slappy curb, and pole. It is designed to be fun for every rider, regardless of age, style, skill level, or wheel type.

HOMEGROWN FUN

Head to **Butler's Orchard** for seasonal activities that are fun for the whole family. Take a hayride down the Bunny Trail in April during the Bunnyland Festival. Bask in the glory of acres of sunflowers midsummer and pick your own berries. In September and October, come for the Pumpkin Festival and select your next jack-o-lanterns.

PLAYGROUNDS AND CAROUSELS

There are many playgrounds in parks across the county, but locals recommend these two. **Sligo Creek Park** not only has multiple playgrounds but also features exercise stations, basketball courts, tennis courts, wooded trails, and grills for cookouts. Over in Bethesda, **Cabin John Park** is popular for its mini train, newly renovated playground, and natural surroundings. If you'd like to ride a century-old carousel, you have two options in Montgomery County! Installed at **Glen Echo Park** in 1921, the canopy and the carved figures of its carousel were made by the Dentzel Carousel Company and provide a classic example of hand woodcarving

popular during the early 1900s. From 1983 through 2003, the entire carousel was fully restored, and it is now listed on the National Register of Historic Places.

HOLIDAY LIGHTS

Revel in the glow of millions of sparkling lights during the holiday season. The annual display at **Brookside Gardens, Garden of Lights**, transforms the park into a magical winter wonderland. Stroll through the one-half mile, outdoor, walk-through exhibit and enjoy the twinkling lights and glimmering one-of-a-kind displays adorning the flowerbeds and grounds throughout the 50-acre horticultural gem in Wheaton. **Winter Lights Festival** is a 3.5 mile drive through the enchanted setting of **Seneca Creek State Park** that takes you past more than 450 illuminated displays and beautifully lit trees that light up the night. Add to the festivities by tuning into 97.1 WASH FM for holiday music. In Kensington, experience the Festival of Lights at the **Washington, D.C. Temple**. The presentation features over 400,000 lights and beautifully decorated trees. The Visitors' Center exhibits nativities from around the world and hosts many holiday performances that are free and open to the public. Named "One of the Best Holiday Lights Displays in the DC Area" by *The Washington Post* and ranked among the top in the nation by *Parade* and *Country Living*, **Winter City Lights** is the perfect spot for a family outing or a cozy date night. Stroll through more than a million twinkling lights, enjoy dazzling displays, and catch the 52-foot holiday tree's light show that dances to music every 15 minutes.



HOW DOES YOUR GARDEN GROW?

If you're searching for tranquility, visit one of the county's beautiful public gardens. Whether you want to spend a quick hour or have a whole day to wander, these gardens are sure to bring you peace.

The famous, 50-acre **Brookside Gardens** features an azalea garden, rose garden, children's garden, formal garden, fragrance garden, and Japanese-style garden. In the summer, stay for the Wings of Fancy exhibit featuring hundreds of butterflies. **McCrillis Gardens & Gallery** also has azaleas, along with various bulbs, spring wildflowers, and shade-loving perennials in bloom. Or check out **Brighton Dam's Azalea Garden** located at the **Triadelphia Reservoir** to witness more than 22,000 azalea bushes over 5 acres in a hardwood forest.

Visit **Croydon Creek Nature Center** to explore a Monarch butterfly garden perfect for wandering and a winding creek bustling with wildlife, or head to the grounds of **Glenstone Museum** to walk among native flora—including Virginia spiderwort, foxglove beardtongue, and southern magnolia. (Reservations Required)

The plantings at **Meadowside Nature Garden's Habitat Garden** were designed to attract birds, wildlife, and bees and other pollinators. More native plants can be found at **Woodend Nature Sanctuary**, where azaleas and spring wildflowers grow alongside a hemlock grove. On a clear day in mid-July, wander through 30 acres of vibrant sunflowers at the **Mckee-Beshers Wildlife Management Area**.

If you've seen enough flowers, enjoy the vegetable and herb gardens and apple orchard within the massive 455-acre **Agricultural History Farm Park** or visit **Butler's Orchard** to meander through fields of berries, pumpkins, or even Christmas trees depending on the season.

► MCKEE-BESHERS WILDLIFE MANAGEMENT AREA



▶ MONTGOMERY PARKS

NATURE'S FINEST

No matter the time of year, it's always a great day to be outdoors. Montgomery County is home to hiking, cycling, kayaking, and more. And if you're into spending the night beneath the stars, camping options abound.

HIKING

Many of the county's parks offer walking and hiking paths. But for a serious hike, head to the top of **Sugarloaf Mountain** for a spectacular adventure and a stunning view. The popular Blue Northern Peak Trail is a 5.5-mile loop that's rated as difficult.

The **C&O Canal National Historical Park** has its flat towpath, but near **Great Falls** is the real workout: **Billy Goat Trail**. The 4.7-mile trail has three separate sections—take A if you like rock scrambling.

It's still accessible for families as long as kids are old enough to climb safely.

CYCLING

Montgomery County's rural roads are safe for cycling and provide gorgeous scenery to boot. Off-road, the **C&O Canal's** 184.5 miles of flat towpath runs parallel along the Potomac River. The **Capital Crescent Trail** intersects with the towpath, leading from the river all the way to Washington, D.C. There's also the **Bethesda Trolley Trail**, which

is a 4-mile path that follows an old streetcar line.

KAYAKING, CANOEING, AND PADDLEBOARDING

Experience **Little Seneca Creek Park**, which includes Clopper Lake, where kayak rentals are available May through September. Visitors to **Rock Creek Regional Park** can enjoy the beautiful Lake Needwood in rental kayaks,

rowboats, canoes, or pedal boats. Guests can also take a tour of the lake aboard the **Needwood Queen** during the summer season. Explore **Black Hill Regional Park** via rowboat, kayak or canoe or on a stand-up paddleboard, all available for rent onsite.

ROCK CLIMBING

Host to a number of climbs, **Sugarloaf Mountain** is ideal for both top rope and trad climbing. Gather your gear and make your way to one of the two main areas: Devil's Kitchen and Middle Earth.

CAMPING

There are small campsites along the **C&O Canal towpath** as well as **five lock-houses** available for rent. The Robert C. McDonnell Campground in **Cabin John Park** is a small, tent-only campground, while **Little Bennett Campground** in Clarksburg has campsites, cabins, yurts, and RV sites. In College Park, **Cherry Hill Park** offers a premium camping experience with camping, RVing, cabins, and yurts. For large groups and events, **Rockwood Manor** in Potomac is a unique retreat destination with camp lodging and converted cabins for up to 85 guests.



FALLS AND RAPIDS AT GREAT FALLS

Experience the beauty of the powerful Potomac River as water flows across rocks and dips along the border between Maryland and Virginia.



LIFE IS

BETTER
OUTDOORS!



*Adventures for
the Whole Family!*



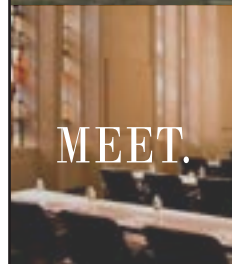
BolgerCenter
A CONFERENCE HOTEL

Make every experience unforgettable with Bolger



EAT.

Surrounded by 83 acres of beautifully manicured grounds and lush gardens in a retreat setting, the William F. Bolger Center, a conference hotel, offers the most exclusive accommodations in Potomac, Maryland.



MEET.

Located near Bethesda, Rockville and downtown Washington, DC, our I.A.C.C certified conference hotel offers your attendees an affordable productive learning environment and provides the highest level of both professional and personal service.



RETREAT.

This 431 room historic hotel features 75 meeting spaces including the glamorous Stained Glass Hall Ballroom, offering spectacular ambiance for retreats, milestones and meetings.

SALES DEPARTMENT (301) 983-7765

**9600 Newbridge Drive
Potomac, MD 20854**

DEERE VALLEY FARMS

22919 Dickerson Rd Dickerson MD

Market*Ice Cream*Food Truck

Fall at the Farm

- *Ice cream Window open through Oct 25
- *Food truck Saturdays in October
- *Farm grown mums and pumpkins
- *Fresh Turkeys for the Holidays
- *Tenderloins and Rib Roasts
- *Locally made products and gifts

www.deerevalleyfarms.com

**ADVENTURE
COMES NATURALLY**

Bike the towpath along the C&O Canal National Historical Park, kayak the rushing waters of Great Falls, or wander peaceful park trails. Montgomery County is made for outdoor explorers.

visitmontgomery.com/parks-outdoors/

VISIT MONTGOMERY
MARYLAND'S CULTURAL CAPITAL



Mooi eats™

Montgomery County boasts an authentic dining experience featuring globally-inspired cuisine from cultures around the world. Hidden gems and tasty treasures can be found among more than 900 restaurants across the county, where there's an outstanding dining option for every taste and occasion.

EXPLORE BY CUISINE

Pizza lovers are always in search of the best spots to grab a slice. **Frankly... Pizza!** features the best local brick oven pizza, and **Gentleman Jim's** serves a classic pizza—with Swiss cheese. For something totally different, visit **Stained Glass Pub** for tiny square slices to pop like potato chips!

Any time is the right time for a taco, and you can find authentic options around the county. **Ixtapalapa Taqueria**

serves affordable tacos and **Tortacos** offers an LA-style taco menu. **Gringos & Mariachis** is great for an intimate date night or happy hour. For a more neighborhood experience with authentic South American ambiance, check out **Bar Taco**.

Looking for vegan-friendly options? Find a variety of plant-based eateries across the county. **St. Veg** specializes in homestyle vegan cooking, while **Planta's** menu ranges from



▶ HELLO BETTY BOAT BAR PATIO



American comfort food to savory Italian dishes to creative twists on Asian cuisines. **Asia Cafe** offers a huge selection of vegan Chinese options, and **Yuan Fu Vegetarian** is a vegan Chinese restaurant. **Al Ha'esh** is kosher-certified restaurant and features Israeli-styled grilled skewers.

For sweet treats, stop by each vendor at **Lancaster County Dutch Market** for an assortment of pies, doughnuts, and 35 kinds of fudge. If you'd rather be served, head to **Tatte Bakery & Cafe** for a cinnamon and pecan rose, designer desserts at

Georgetown Cupcake, or Instagrammable ice cream at **Jimmie Cone** and **Max's Best Ice Cream**.

DIVERSE OWNERSHIP

The county is home to a wide variety of Black-owned restaurants. For lunch, visit **Hardy's BBQ**, a food truck with a home at the year-round **Montgomery Farm Women's Cooperative Market**. At dinnertime, head to **All Set Restaurant & Bar** for a Southern-style twist on New England coastal cuisine.

Many Black-owned bistros in the county serve up global menus. For traditional West African cuisine, check out **African Palace** and

10 WEEKEND BRUNCHES THAT ARE WORTH EVERY DOLLAR

With so many great spots offering variations of our favorite weekend meal, picking the perfect place to indulge can be a bit overwhelming. Luckily, you don't have to pick just one! To get you started, we've pulled 10 of the best places to brunch in Montgomery County, Maryland, that are worth every dollar.

- 1 **Fogo de Chao**
11600 Old Georgetown Rd., North Bethesda
- 2 **World of Beer**
7200 Wisconsin Ave, Bethesda
196 E. Montgomery Ave #B, Rockville
- 3 **MoCo's Founding Farmers**
12505 Park Potomac Ave., Potomac
- 4 **Barrel and Crow**
4867 Cordell Ave, Bethesda
- 5 **La Malinche**
8622 Colesville Rd, Silver Spring
- 6 **Silver Diner**
9811 Washingtonian Blvd., Gaithersburg
12276 Rockville Pike, Rockville
- 7 **Pinstripes**
11920 Grand Park Ave, North Bethesda
- 8 **Matchbox**
7278 Woodmont Ave, Bethesda
1699 Rockville Pike, Rockville
919 Ellsworth Dr, Silver Spring
- 9 **Summer House Santa Monica**
11825 Grand Park Ave, North Bethesda
- 10 **Clyde's Tower Oaks Lodge**
2 Preserve Pkwy, Rockville



Mansa Kunda. Beteseb is a family-owned restaurant that serves authentic Ethiopian food. **Ruth's African Kitchen** is a Pan-African restaurant celebrating the rich Nigerian culture, while **Rainbow African Restaurant** brings the flavors of Ghana. Savor the taste of the Caribbean at two authentic Jamaican eateries: Try the coconut rundown fish soup at **Island Pride** and the variety of bold flavors at **Negril The Jamaican Eatery**.

Women-owned restaurants across Montgomery County are creating a seat at the table, so to speak. **Miss Toya's Creole House** and

Miss Toya's Southern Kitchen offer a menu that blends classic Southern comfort and Creole traditions with a modern, creative twist. Find authentic Canadian delicacies such as poutine at **Taste of Montreal. Scratch Kitchen & Bistro** offers healthy local food sourced from local farmers. Finish the night at **Quarry House Tavern**, a basement dive bar with a cult following that serves high-quality bar food and a

huge drinks menu. **Clyde's Tower Oaks** and **Chevy Chase** serve classic American fare in a warm, inviting setting.

DESTINATION DINING

Does the journey make the food taste better? Find out for yourself by planning an excursion to a world-class restaurant. In Brookeville, **The Manor at Silo Falls** serves fresh seasonal menus and handcrafted cocktails in

a rustic and relaxed setting. **The Crossvines** is an escape for wine enthusiasts that features locally-grown and processed wines and a curated menu sure to delight—all in a peaceful setting. (Read more on page 35.)

Zinnia serves customers in Silver Spring at their cafe, restaurant, and rustic tavern settings. You can even dine amid the surrounding gardens. **The Comus Inn's** panoramic views of Sugarloaf Mountain draw almost as many visitors as its local brews, live music, and gourmet food.



FARM FARE TO FRESH FORKFULS

Take the idea of “farm-to-table” to the next level with these unexpectedly fresh dining experiences.

Explore Montgomery County's rural side through satisfyingly meals prepared in partnership with local growers, suppliers, vintners, and brewers. From a company picnic to a chic date night out to hearty, family-friendly barbecue feasts, we've rounded up a few of our favorite options.

Bask in lush views while enjoying a meal comprised of locally sourced ingredients and live, local music. For delicious pizza, local beers and wines, farm-fresh salads, ice cream & chill farm vibes, visit **Calleva's Pizza Nights on**

the Farm, a seasonal fun and farm fresh experience for the whole family.

Whether you spell it barbecue or BBQ, the flame-kissed goodness is the centerpiece of **High Point Farm's** catering services. Their expert team of chefs will bring the grills to you or serve you onsite at the farm.

Known as “the company picnic place,” **Smokey Glen Farm** encourages guests to mix business with a hearty helping of their famous barbecue chicken. Throughout the summer, join in their Fridays on the Farm events.

Nestled in the midst of one of the nation's leading agricultural reserves, **The Crossvines** is a winery, research farm, dining destination, and learning hub all in one.

Deere Valley Farm and **Brown Cow Creamery** delights visitors with handcrafted ice cream made from fresh, local ingredients, offering a variety of flavors that satisfy every sweet craving. Just down the street, visit **Locals Farm Market** for handcrafted coffee or wood-fired pizza and to shop products made by local artisans.

MAX'S

BEST ICE CREAM

Boozy • 36 Flavors • Over-the-Top • Farm-Fresh



Dine-In • Open Late • Parking • Family Friendly

7770 Woodmont Ave
Bethesda, MD

www.maxsbesticecream.com
(301) 902-0790



Fogo is Fire

Fire-Roasted Meats Carved Tableside
Seafood Options
Market Table & Feijoada Bar
Group & Private Dining
All Day Happy Hour

Lunch, Dinner, & Weekend Brunch

FOGO DE CHÃO

11600 Old Georgetown Rd,
North Bethesda, MD 20852

© 2025 Fogo de Chão, Inc. All rights reserved.



VISIT
MONTGOMERY
MARYLAND'S CULTURAL CAPITAL™

MAY IS
Go MOCO
MONTH!

Go SHOP Go STAY

Go EAT Go PLAY

visitmontgomery.com/go-moco/

Tatte

BAKERY & CAFÉ

INSPIRING CRAFT. EVERY DAY.



Rockville · 12232 Rockville Pike, Rockville
Westbard · 5300 Zenith Overlook, Bethesda
Bethesda · 7276 Wisconsin Ave, Bethesda
Tatte Catering · 617.945.1205

WWW.TATTEBAKERY.COM



TASTEMAKERS Trail™

From savoring a pint on a working horse farm to sipping a glass of rosé at the base of Sugarloaf Mountain, explore the Tastemakers Trail craft beverage tour for the perfect drink-centric weekend.

WE'LL DRINK TO THAT

Maryland has a rich farming history that is still alive today. This legacy, paired with Montgomery County's renowned hospitality and the entrepreneurial spirit that spans every acre, permeates every stop on the **Tastemakers Trail**. Montgomery County Tastemakers are brewing, fermenting, distilling and roasting some of the best local libations in the state of Maryland!

WEEKEND ITINERARIES

With so many Tastemaker experiences, it's easy to create a beverage-centric weekend in Montgomery County. Sip and savor your way around farm-chic tasting rooms and sophisticated urban wineries. Enjoy a pint or two overlooking the rolling hills of the 93,000-acre Agricultural Reserve or create-your-own urban brewery walking tour in Silver Spring. Pay a visit to

the largest organic coffee roaster in Maryland or sample craft spirits at multiple distilleries. For drink-centric weekend getaway ideas, scan the QR code below and visit the Tastemakers Trail website.

EXPLORE RESPONSIBLY

Everyone in your group can experience the Tastemakers Trail by taking advantage of the transportation options in Montgomery County. There's an extensive network of Uber and Lyft drivers in the county, and a few breweries on the trail are also accessible and within walking distance from the Red Line Metro, making traveling from Washington, DC a breeze. There are also several high-quality motor coach and driver services available in the area if you are looking to create your own tour experience.

Scan QR code for a full listing of craft beverages in Montgomery County.



▶ WAREACA BREWING CO.



▶ SILVER BRANCH BREWERY

OUR *Top 5* FAVORITE EXPERIENCES

- ▶ Dive into the complexities of wine and maybe even discover your new favorite food pairing at **The Crossvines**. Take a guided tour which blends the story and goals of The Crossvines with educational insights into winemaking with a memorable wine tasting journey.
- ▶ **Windridge Vineyards** in UpCounty offers a serene escape where visitors can enjoy award-winning wines in a picturesque setting. Sip on handcrafted reds, whites, and rosés while taking in the scenic vineyard views. With tasting experiences, seasonal events, and a warm, inviting atmosphere, every visit is a celebration of fine wine and relaxation.
- ▶ At **Clearskies Meadery**, explore the artistry behind modern mead-making. Sample a range of handcrafted meads, from dry and crisp to sweet and complex, each made with locally sourced honey and natural ingredients. Whether you're new to mead or a longtime enthusiast, the tasting room provides a warm space to learn, sip, and discover a whole new world of flavor.
- ▶ Enter the tasting room at **Song Dog Farm Distillery** for delicious spirits crafted with care from locally sourced ingredients. Sample small-batch whiskeys, vodkas, and liqueurs while enjoying a warm, inviting atmosphere. Whether you're a connoisseur or just looking for a fun outing, every sip tells the story of the farm and its dedication to quality.
- ▶ Located on a 220-acre horse farm in Laytonsville, **Waredaca Brewing Company** is committed to sustainability, local ingredients and brewing beer using the best practices possible. The farm has been in the same family for over 60 years and offers an unforgettable beer yurt experience during the fall and winter seasons.



▶ WINDRIDGE VINEYARDS



DISTINCTLY DIFFERENT

In an area as richly diverse as Montgomery County, you'll find a wealth of out-of-the ordinary venues. Gravitating towards lush gardens or something more rustic? How about a hip urban locale in the center of all the action? If you're looking for a venue that is distinctly different, consider these locations.

AIX LA CHAPPEL

Poolesville
Vibe: Rural Elegance

AFI SILVER THEATRE AND CULTURAL CENTER

Silver Spring
Vibe: Red Carpet Elegance

BOLGER CENTER

Potomac
Vibe: Elegantly Appointed

BROOKSIDE GARDENS

Wheaton
Vibe: Picturesque Paradise

CALLEVA FARM

Poolesville
Vibe: Farm-to-Table Charm

GLEN ECHO PARK

Glen Echo
Vibe: Art Deco Inspired

GLENVIEW MANSION

Rockville
Vibe: Historic Charm

HIGH POINT FARM

Clarksburg
Vibe: Upcounty Living

KENTLANDS MANSON

Gaithersburg
Vibe: Home, Elevated

MARYLAND SOCCERPLEX & ADVENTIST HEALTHCARE FIELDHOUSE

Germantown
Vibe: Sports Venue

MUSIC CENTER & MANSION AT STRATHMORE

North Bethesda
Vibe: Gala Grandeur

NATIONAL CAPITAL TROLLEY MUSEUM

Colesville
Vibe: Historic

RENTALS AT CEDAR LANE

Bethesda
Vibe: Urban Vibrance

ROCKWOOD MANOR

Potomac
Vibe: Woodland Escape

SANDY SPRING MUSEUM

Sandy Spring
Vibe: Rustic Elegance

SMOKEY GLEN FARM

Gaithersburg
Vibe: Picnic in the Meadow

SILVER SPRING CIVIC BUILDING AT VETERANS PLAZA

Silver Spring
Vibe: Lots of Space for All

TIKVAT ISRAEL CONGREGATION

Rockville
Vibe: Spacious and Charmin

THE CROSSVINES

Poolesville
Vibe: Educational

THE FILLMORE

Silver Spring
Vibe: Rock Star Cool

THE LODGE AT LITTLE SENECA CREEK

Boyd's
Vibe: Rustic Lodge

VISARTS

Rockville
Vibe: Urban Artistry

WOODEND SANCTUARY & MANSION

Chevy Chase
Vibe: Urban Grace

EVEN HOTEL EVEN ROCKVILLE

Great Location

Just off the 270 Beltway, perfect for easy access to DC. Ideal for T&T, local businesses, government, corporate, pharma, associations, and long-term stays.

Walking Distance

Enjoy nearby local restaurants and convenient access to Red Line Metro

Special Offer

60,000 IHG Business Reward Points



Contact Us

Shalomi Sanders
shalomi.sanders@evenrockville.com
301-881-3835



Group Perks

Shuttle offered for group blocks of 10+
Dedicated account manager
Booking link for room blocks
Discounted parking

Address

1775 Rockville Pike
Rockville, MD 20852



FEELING INSPIRED?

Let our destination sales team help you plan your next group event. Contact the Visit Montgomery team today at sales@visitmontgomery.com.

than 900 ethnically diverse restaurants. Attendees will find delectable Italian food, delicious pastries, scrumptious pizza, smooth ice cream, spicy Asian fare, traditional American food, and so much more! Once they're off the clock, they can also experience our **Tastemakers Trail** and explore local craft beverage options.

CHOOSE YOUR ADVENTURE

Montgomery County is comprised of bustling urban districts, serene suburbs, and a 93,000-acre Agricultural Reserve. No matter what kind of experience your visitors want, we can make it happen!

Six must-see areas that offer a big city vibe with small town comforts include **The Square Rockville, Pike + Rose** in North Bethesda, **Downtown Silver Spring, Bethesda Row, rio Gaithersburg**, and **Downtown Crown** in Gaithersburg.

For those with an interest in the arts, there is a wide range of world-class museums, galleries, theaters, and music venues here. Top favorites for groups include **Strathmore Music Center and Mansion, The AFI Silver Theatre**, and **The Fillmore Silver Spring**.

MEET AND GREET

There's a reason Montgomery County is a popular destination for groups of all kinds to meet. From business meetings to industry conferences to trade shows and more, your attendees will jump at the chance to visit.

PRIME LOCATION

While Montgomery County is a premier destination all on its own, it's also a great location for day trips to the region's other cities. Baltimore, Annapolis, and Washington, D.C. are all within an hour's drive.

Not to mention the ease

with which you can get here!

With three major airports nearby, your attendees will have no problem finding the right flight. Choose between **Washington Dulles International Airport (IAD)**, **Ronald Reagan Washington National Airport (DCA)**, and

Baltimore/Washington Thurgood Marshall International Airport (BWI) for your trip.

Also, the bulk of the **Metro Red Line** runs through the county, giving attendees an accessible way to traverse the county and trek into D.C.

CREATURE COMFORTS

There's always room in one of 58 hotels, numerous unique venues, and the grand **Bethesda North Marriott Hotel & Conference Center**. With 8,836+ sleeping rooms and 974,000+ square feet of meeting space, the options are plentiful for both large and small groups.

Foodies will be impressed with the choices among more

We Are **HILTON** We Are **HOSPITALITY**



NEW LOOK, MORE SPACE...SAME GREAT LOCATION!

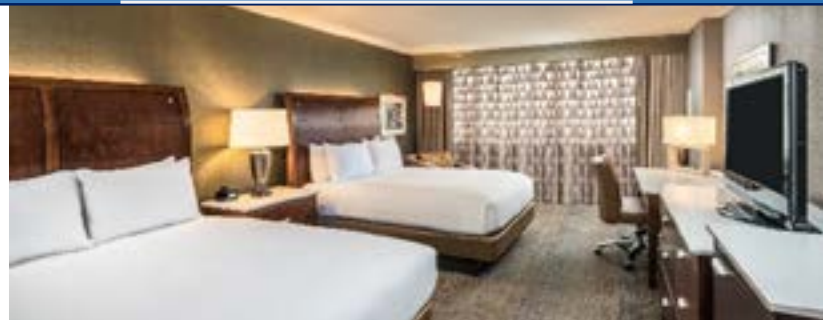
- ❖ 315 newly renovated guest rooms & suites
- ❖ Over 35,000 sq. ft. of flexible meeting space
- ❖ 25 Meeting rooms with on site A/V
- ❖ Convenient location, steps away from Twinbrook Metro Station (Red Line)
- ❖ Walking distance to shops, restaurants and stores



- ❖ Inclusive packages & exceptional culinary staff
- ❖ Pike Café, proudly serving Starbucks coffee
- ❖ Olive's Modern American Bistro is open for breakfast, lunch, happy hour & dinner
- ❖ Daily happy Hour offering appetizers, local craft brews and over 30 wines by the glass

www.HiltonRockville.com


Hilton
WASHINGTON DC/ROCKVILLE HOTEL
& EXECUTIVE MEETING CENTER



1750 Rockville Pike ♦ Rockville, MD 20852 ♦ 301-468-1100

61 VINEYARD

28712 Kemptown Road
Damascus, MD 20872
61vineyard.com

**AC HOTEL BY MARRIOTT
BETHESDA DOWNTOWN**

4646 Montgomery Avenue
Bethesda, MD 20814
marriott.com/wasba

**ACTIVITY CENTER AT BOHRER
PARK, SUMMIT HILL FARM**

506 S. Frederick Avenue
Gaithersburg, MD 20877
gaithersburgmd.gov

**ADVENTURE PARK AT
SANDY SPRING**

16701 Norwood Road
Sandy Spring, MD 20860
sandyspringadventurepark.org

**AFI SILVER THEATRE AND
CULTURAL CENTER**

8633 Colesville Road
Silver Spring, MD 20910
afisilver.afi.com

**AGRICULTURAL HISTORY
FARM PARK**

18400 Muncaster Road
Derwood, MD 20855
montgomeryparks.org

AIX LA CHAPPEL FARM

19130 Jerusalem Road
Poolesville, MD 20837
aixlachappelafarm.com

**ALLY CHARTER BUS
WASHINGTON, D.C.**

2141 P Street NW, Suite 103
Washington, DC 20037
allybus.com

**ARTS AND HUMANITIES COUNCIL
OF MONTGOMERY COUNTY**

801 Ellsworth Drive
Silver Spring, MD 20910
creativemoco.com

ARTS BARN

311 Kent Square Road
Gaithersburg, MD 20878
gaithersburgmd.gov

**BEST WESTERN PLUS ROCKVILLE
HOTEL & SUITES**

1251 W. Montgomery Avenue
Rockville, MD 20850
Bestwestern.com/Rockville

BETHESDA MARRIOTT

5151 Pooks Hill Road
Bethesda, MD 20814
bethesdamarriott.com

**MARRIOTT BETHESDA DOWNTOWN
AT MARRIOTT HQ**

7707 Woodmont Avenue
Bethesda, MD 20814
marriott.com/wasbd

**BETHESDA NORTH MARRIOTT
HOTEL & CONFERENCE CENTER**

5701 Marinelli Road
North Bethesda, MD 20852
bethesdanorthmarriott.com

BETHESDA ROW

4950 Elm Street
Bethesda, MD 20814
bethesdarow.com

BETHESDA URBAN PARTNERSHIP

7700 Old Georgetown Road
Bethesda, MD 20814
bethesda.org

BOLGER CENTER HOTEL

9600 Newbridge Drive
Potomac, MD 20854
bolgercenter.com

BROOKSIDE NATURE CENTER

1400 Glenallan Avenue
Wheaton, MD 20902
brooksidenature.org

BUTLER'S ORCHARD

22222 Davis Mill Road
Germantown, MD 20876
butlersorchard.com

**C&O CANAL NATIONAL
HISTORICAL PARK**

1850 Dual Highway, Suite 100
Potomac, MD 21740
nps.gov/choh

C&O CANAL TRUST

1850 Dual Highway, Suite 100
Hagerstown, MD 21740
canaltrust.org

CALLEVA

19936 Fisher Avenue
Poolesville, MD 20837
calleva.org

C&O CANAL QUARTERS

canaltrust.org

LOCKHOUSE 6

6100 Clara Barton Parkway
Bethesda, MD 20816

LOCKHOUSE 10

7906 Riverside Drive
Cabin John, MD 20818

LOCKHOUSE 21 - SWAINS

11700 Swains Lock Road
Potomac, MD 20854

LOCKHOUSE 22

12100 Pennyfield Lock Drive
Travilah, MD 20850

LOCKHOUSE 25

15400 Edwards Ferry Road
Poolesville, MD 20837

LOCKHOUSE 28

3701 Canal Road
Point of Rocks, MD 21777

LOCKHOUSE 49

11118 4 Locks Road
Clear Spring, MD 21722

**CANOPY WASHINGTON DC
BETHESDA NORTH**

940 Rose Avenue
North Bethesda, MD 20852
canopybethesdanorth.com

CHEF B'S DINER

22705 Clarksburg Road
Food Truck Unit TT9
Clarksburg, MD 20871
chefbsdiner.com/

CHERRY HILL PARK

9800 Cherry Hill Road
College Park, MD 20740
cherryhillpark.com

CITY OF GAITHERSBURG

31 South Summit Avenue
Gaithersburg, MD 20877
gaithersburgmd.gov

CITY OF ROCKVILLE

111 Maryland Avenue
Rockville, MD 20850
rockvillemd.gov

CLARA BARTON HOUSE

5801 Oxford Road
Glen Echo, MD 20812
nps.gov/clba

CLARKSBURG PREMIUM OUTLETS

22705 Clarksburg Road
Clarksburg, MD 20871
simon.com/clarksburg

CLEAR SKIES MEADERY

15201 Display Court
Rockville, MD 20850
clearskiesmeadery.com

CLYDE'S CHEVY CHASE

5441 Wisconsin Avenue
Chevy Chase, MD 20815
clydes.com

CLYDE'S TOWER OAKS ROCKVILLE

2 Preserve Parkway
Rockville, MD 20852
clydes.com

COMFORT INN GAITHERSBURG

16216 Frederick Road
Gaithersburg, MD 20877
comfortinn.gaithersburg.com

**COPPER CANYON GRILL—
GAITHERSBURG**

100 Boardwalk Place
Gaithersburg, MD 20878
ccgrill.com

**COUNTRYSIDE ARTISANS
OF MARYLAND**

countrysideartisans.com

**COURTYARD BY MARRIOTT
BETHESDA CHEVY CHASE**

5520 Wisconsin Avenue
Chevy Chase, MD 20815
marriott.com/wasvy

**COURTYARD BY MARRIOTT
ROCKVILLE**

2500 Research Boulevard
Rockville, MD 20850
marriott.com/wasrv

**COURTYARD BY MARRIOTT
SILVER SPRING DOWNTOWN**

8506 Fenton Street
Silver Spring, MD 20910
marriott.com/wassv

COURTYARD BY MARRIOTT

SILVER SPRING NORTH
12521 Prosperity Drive
Silver Spring, MD 20904
marriott.com/wasss

**COURTYARD BY MARRIOTT
WASHINGTONIAN**

204 Boardwalk Place
Gaithersburg, MD 20878
marriott.com/wascg

**CURRENCY EXCHANGE
INTERNATIONAL**

7101 Democracy Boulevard
Bethesda, MD 20817
bethesdacurrencyexchange.com

DAPR AGENCY, LLC

dapragency.com

DC CHARTERBUS COMPANY

dccharterbuscompany.com

DCA CAR SERVICE

3146 16th Street Northwest, #621
Washington, DC 20010
dcacar.com

DEERE VALLEY FARMS

22919 Dickerson Road
Dickerson, MD 20842
deerevalleyfarms.com

DOC WATERS CIDERY

22529 Wildcat Road
Germantown, MD 20876
docwaterscidery.com

**DOUBLETREE BY HILTON
WASHINGTON DC NORTH/
GAITHERSBURG**

620 Perry Parkway
Gaithersburg Maryland 20877
hilton.com/en/hotels/gaigwdt-doubletree-washington-dc-north-gaithersburg

**DOUBLETREE BY HILTON
SILVER SPRING**

8727 Colesville Road
Silver Spring, MD 20910
silverspring.doubletree.com

DOWNTOWN SILVER SPRING

916 Ellsworth Drive
Silver Spring, MD 20910
downtownsilverspring.com

**DOWNTOWN SILVER SPRING
URBAN DISTRICT**

8110 Georgia Avenue
Silver Spring, MD 20910
silverspringdowntown.com

**ELDER PINE BREWING
& BLENDING CO.**

4200 Sundown Road
Gaithersburg, MD 20882
elderpine.com

**EMBASSY SUITES BY
HILTON BETHESDA**

6711 Democracy Boulevard
Bethesda, MD 20817
hilton.com

EVEN HOTELS ROCKVILLE

1775 Rockville Pike
Rockville, MD 20852
evenhotels.com

EXTRAORDINARY ENTERTAINMENT

7609 Airpark Road, Suite A
Gaithersburg, MD 20879
bookextraordinary.com

F. SCOTT FITZGERALD THEATRE

603 Edmonston Drive
Rockville, MD 20851
rockvillemd.gov/theatre

FAIRFIELD INN & SUITES BY MARRIOTT GERMANTOWN GAITHERSBURG

20025 Century Boulevard
Germantown, MD 20874
marriott.com/wasge

FALLS ROAD GOLF COURSE

10800 Falls Road
Potomac, MD 20854
mcggolf.com

FEDERAL REALTY INVESTMENT TRUST

909 Rose Avenue
North Bethesda, MD 20852
federalrealty.com

FOGO DE CHAO

11600 Old Georgetown Road
North Bethesda, MD 20852
fogodechao.com/location/bethesda

GAITHERSBURG MARRIOTT WASHINGTONIAN CENTER

9751 Washingtonian Boulevard
Gaithersburg, MD 20878
marriott.com/waswg

GAITHERSBURG GERMANTOWN CHAMBER OF COMMERCE

910 Clopper Road, Suite 205N
Gaithersburg, MD 20878
g chamber.org

GLEN ECHO PARK

7300 MacArthur Boulevard
Glen Echo, MD 20812
glenechopark.org

GLENSTONE MUSEUM

12100 Glen Road
Potomac, MD 20754
glenstone.org

GLENVIEW MANSION

603 Edmonston Drive
Rockville, MD 20851
rockvillemd.gov/Glenview

GO APE ZIPLINE & ADVENTURE PARK

6129 Needwood Lake Drive
Derwood, MD 20855
goape.com

GOGO CHARTERS

1200 Eton Court, NW, 3rd Floor
Washington, DC 2007
gogocharters.com/washington-dc-charter-bus

GOJOE PATROL

309 Kimblewick Drive
Silver Spring, MD 20904
gojopatrol.com/montgomery-county

GREATER BETHESDA CHAMBER OF COMMERCE

7910 Woodmont Avenue
Bethesda, MD 20814
greaterbethesdachamber.org

GREATER SILVER SPRING CHAMBER OF COMMERCE

8601 Georgia Avenue, Suite 203
Silver Spring, MD 20910
gsscc.org

GROSSBERG COMPANY, LLP

6500 Rock Spring Drive, Suite 200
Bethesda, MD 20817
grossberg.com

HAMPSHIRE GREENS GOLF COURSE

616 Firestone Drive
Silver Spring, MD 20905
mcggolf.com

HAMPTON INN & SUITES BY HILTON WASHINGTON DC NORTH—GAITHERSBURG

960 North Frederick Avenue
Gaithersburg, MD 20879
gaithersburgsuites.hamptoninn.com

HANK DIETLE'S TAVERN

11010 Rockville Pike
Rockville, MD 20852
hankdietles.net

HERITAGE MONTGOMERY

12535 Milestone Manor Lane
Germantown, MD 20876
heritagemontgomery.org

HIGH POINT FARM

23730 Frederick Road
Clarksburg, MD 20871
highpointcatering.com

HILTON GARDEN INN BETHESDA

7301 Waverly Street
Bethesda, MD 20814
bethesda.hgi.com

HILTON GARDEN INN ROCKVILLE GAITHERSBURG

14975 Shady Grove Road
Rockville, MD 20850
rockvillegaithersburg.hgi.com

HILTON GARDEN INN SILVER SPRING WHITE OAK

2200 Broadbirch Drive
Silver Spring, MD 20904
silverspring.hgi.com

HILTON WASHINGTON DC/ROCKVILLE HOTEL & EXECUTIVE MEETING CENTER

1750 Rockville Pike
Rockville, MD 20852
hiltonrockville.com

HOLIDAY INN GAITHERSBURG

2 Montgomery Village Avenue
Gaithersburg, MD 20879
higaithersburg.com

HOME2 SUITES BY HILTON SILVER SPRING

1701 Elton Road
Silver Spring, MD 20903
hilton.com

HOMEWOOD SUITES WASHINGTON DC—NORTH GAITHERSBURG

805 Russell Avenue
Gaithersburg, MD 20879
homewoodsuites.com

HYATT REGENCY BETHESDA

One Bethesda Metro Center
Bethesda, MD 20814
hyattregencybethesda.com

IRONMARK

9040 Junction Drive
Annapolis, MD 20701
ironmarkusa.com

JOSIAH HENSON MUSEUM & PARK

11420 Old Georgetown Road
North Bethesda, MD 20852
josiahhensonsite.org

KENTLANDS MANSION

320 Kent Square Road
Gaithersburg, MD 20878
gaithersburgmd.gov/

LAYTONSVILLE GOLF COURSE

7130 Dorsey Road
Gaithersburg, MD 20882
mcggolf.com

LITTLE BENNETT GOLF COURSE

25900 Prescott Road
Clarksburg, MD 20871
mcggolf.com

LIVE EDGE VINEYARDS

25201 Peach Tree Road
Clarksburg, MD 20871
liveedgevineyards.com

LONE OAK FARM BREWING COMPANY

5000 Olney Laytonsville Road
Olney, MD 20832
loneoakbrewingco.com

LTD CREATIVE

122 E. Patrick Street, #116
Frederick MD 21701
ltdcreative.com

LUCKY STRIKE GAITHERSBURG

1101 Clopper Road
Gaithersburg, MD 20878
luckystrikeent.com/location/lucky-strike-gaithersburg

LUCKY STRIKE ROCKVILLE

15720 Shady Grove Road
Gaithersburg, MD 20877
<https://www.luckystrikeent.com/location/lucky-strike-rockville>

MARYLAND SOCCERPLEX & DISCOVERY SPORTS CENTER

18031 Central Park Drive
Boys, MD 20841
mdsoccerplex.org

MAX'S BEST ICE CREAM

7770 Woodmont Avenue
Bethesda, MD 20815
maxsbesticcream.com

MCDOT/COMMUTER SERVICES

capitalbikeshare.com

MON AMI GABI

7239 Woodmont Ave,
Bethesda, MD 20814
monamigabi.com/bethesda/

MONTGOMERY COUNTY CHAMBER OF COMMERCE

51 Monroe Street
Rockville, MD 20850
montgomerycountychamber.com

MONTGOMERY HISTORY

111 West Montgomery Avenue
Rockville, MD 20850
montgomeryhistory.org

MONTGOMERY PARKS

montgomeryparks.org

BROOKSIDE GARDENS

1800 Glenallan Avenue
Wheaton, MD 20902
montgomeryparks.org

CABIN JOHN ICE RINK

10610 Westlake Drive
Rockville, MD 20852
montgomeryparks.org

LITTLE BENNETT REGIONAL PARK

23701 Frederick Road
Clarksburg, MD 20871
montgomeryparks.org

LITTLE BENNETT CAMPGROUND

23705 Frederick Road
Clarksburg, MD 20871
montgomeryparks.org

OAKLEY CABIN AFRICAN AMERICAN MUSEUM AND PARK

3610 Brookeville Road
Brookeville, MD 20833
montgomeryparks.org

ROCK CREEK REGIONAL PARK

6129 Needwood Lake Drive
Rockville, MD 20855
montgomeryparks.org

SOUTH GERMANTOWN RECREATIONAL PARK

18041 Central Park Circle
Boys, MD 20841
montgomeryparks.org

THE LODGE AT LITTLE SENECA CREEK

14500-A Clopper Road
Boys, MD 20841
montgomeryparks.org

NATIONAL CAPITAL TROLLEY MUSEUM

1313 Bonifant Road
Colesville, MD 20905
dctrolley.org

NATIONAL CHARTER BUS WASHINGTON, D.C.

1801 Columbia Road, NW #205
Washington, D.C. 20009
nationalbuscharter.com

NATIONAL MUSEUM OF HEALTH AND MEDICINE

2460 Linden Lane
Building #2500
Silver Spring, MD 20910
medicalmuseum.mil

NEEDWOOD GOLF COURSE

6724 Needwood Road
Derwood, MD 20855
mcggolf.com

OLNEY CHAMBER OF COMMERCE

3460 Olney-Latonsville Road
Olney, MD 20832
olneymd.org

OLNEY THEATRE CENTER

2001 Olney-Sandy Spring Road
Olney, MD 20832
olneytheatre.org

PEDEGO ELECTRIC BIKES

4926 Hampden Lane
Bethesda, MD 20814
pedegoelectricbikes.com/dealers/bethesda/

PET AND HOME CARE

3340 Galena Drive, 106
Frederick, MD 21704
petandhomecare.com

PETERSON COMPANIES

12500 Fair Lakes Circle, Suite 400
Fairfax, VA 22033
petersoncos.com

PIKE AND ROSE

11580 Georgetown Road
Bethesda, MD 20852
pikeandrose.com

PIKE DISTRICT PARTNERSHIP

10500 Rockville Pike, No.902
Rockville, MD 20852
PikeDistrict.org

POOLESVILLE AREA CHAMBER OF COMMERCE

P.O. Box 256
Poolesville, MD 20837
poolesvillechamber.com

POOLESVILLE GOLF COURSE

16601 West Willard Road
Poolesville, MD 20837
mcggolf.com

POTOMAC CHAMBER OF COMMERCE

P.O. Box 59160
Potomac, MD 20859
potomacchamber.org

RATTLEWOOD GOLF COURSE

13501 Penn Shop Road
Mt. Airy, MD 21771
mcggolf.com

RED DOOR ESCAPE ROOM

125 Boardwalk Place
Gaithersburg, MD 20878
reddoorescape.com/escape-rooms/gaithersburg/

RESIDENCE INN BETHESDA DOWNTOWN

7335 Wisconsin Avenue
Bethesda, MD 20814
marriott.com/wasbr

RESIDENCE INN GAITHERSBURG

9721 Washingtonian Boulevard
Gaithersburg, MD 20878
marriott.com/waswn

RIO

9841 Washingtonian Boulevard, Suite S1
Gaithersburg, MD 20878
riolakefront.com

RIVERWORKS ART CENTER, INC.

19215 Beallsville Road
Beallsville, MD 20839
riverworksart.org/

RMA WORLDWIDE CHAUFFEURED TRANSPORTATION

12270 Wilkins Avenue
Rockville, MD 20852
rmalimo.com

ROCKVILLE CHAMBER OF COMMERCE

1 Research Court
Suite 450
Rockville, MD 20850
rockvillechamber.org

ROCKVILLE CIVIC CENTER PARK

603 Edmonston Drive
Rockville, MD 20851
rockvillemd.gov

ROCKVILLE MUSICAL THEATRE

PO Box 1248
Rockville, MD 20849
r-m-t.org

THE SQUARE AT ROCKVILLE

1626 E. Middle Lane
Rockville, MD 20852
thesquarerockville.com

ROCKWOOD MANOR RETREATS & EVENTS

11001 MacArthur Boulevard
Potomac, MD 20854
rockwoodmanor.com

ROUND HOUSE THEATRE

4545 East West Highway
Bethesda, MD 20814
roundhousetheatre.org

SANDY SPRING MUSEUM

17901 Bentley Road
Sandy Spring, MD 20860
sandypringmuseum.org

SARA TORRENCE CMP EMERITUS & ASSOCIATES

419 Russell Avenue, #509
Gaithersburg, MD 20879

SHERATON ROCKVILLE

920 King Farm Boulevard
Rockville, MD 20850
sheratonrockville.com

SILVER BRANCH BREWING COMPANY

8401 Colesville Road, #150
Silver Spring, MD 20910
silverbranchbrewing.com

SILVER SPRING CIVIC BUILDING AT VETERANS PLAZA

One Veterans Place
Silver Spring, MD 20910
montgomerycountymd.gov

SILVER DINER ROCKVILLE

12276 Rockville Pike
Rockville, MD 20852
silverdiner.com

SILVER DINER GAITHERSBURG

9811 Washingtonian Boulevard
Suite I-10
Gaithersburg, MD 20878
silverdiner.com

SLIGO CREEK GOLF COURSE

9701 Sligo Creek Parkway
Silver Spring, MD 20901
mcggolf.com

SMOKEY GLEN FARM

16407 Riffleford Road
Gaithersburg, MD 20878
smokeyglenfarm.com

SONG DOG FARM DISTILLERY

18100 Bucklodge Road
Boysds, MD 20841
songdog.co

SPARK BY HILTON GERMANTOWN

20260 Goldenrod Lane
Germantown, MD 20876
hilton.com

STONE SILO BREWERY

28800 Kemptown Road
Damascus, MD 20872
stonesilobrewery.com

STRATHMORE—THE MUSIC CENTER & MANSION

5301 Tuckerman Lane
North Bethesda, MD 20852
strathmore.org

SUGARLOAF MOUNTAIN VINEYARDS

18125 Comus Road
Dickerson, MD 20842
smwinery.com

TATTE BAKERY & CAFÉ

7276 Wisconsin Avenue
Bethesda, MD 20814
tattebakery.com/

THE BETHESDAN, TAPESTRY COLLECTION BY HILTON

8120 Wisconsin Avenue
Bethesda, MD 20814
hilton.com/en/hotels/wasbaup-the-bethesdanhotel

THE COMUS INN

23900 Old Hundred Road
Dickerson, MD 20842
TheComusInn.com

THE CROSSVINES

16601 W Willard Road
Poolesville, MD 20837
crossvines.com

THE GROVE

7747 Tuckerman Lane
Potomac, MD 20747
thegrovemd.com

THE MAGIC DUEL

TheMagicDuel.com

THE URBAN WINERY

2315 Stewart Avenue
Silver Spring, MD 20910
theurbanwinery.com

TIKVAT ISRAEL

2200 Baltimore Road
Rockville, MD 20851
tikvatisrael.org

TOBY'S DINNER THEATRE

5900 Symphony Woods Road
Columbia, MD 21004
tobysdinnertheatre.com

TOP GOLF GERMANTOWN

4601 Damascus Road
Laytonsville, MD 20882
topgolf.com

TORCHY'S TACOS

12266 Rockville Pike, A
Rockville, Md 20852
torchystacos.com

TRUE FOOD KITCHEN BETHESDA

7100 Wisconsin Avenue
Bethesda, MD 20815
truefoodkitchen.com

TRUE FOOD KITCHEN GAITHERSBURG

221 Rio Boulevard, Suite 0221
Gaithersburg, MD 20878
truefoodkitchen.com

VAMOOSE BUS

7400 Waverly Street
Bethesda, MD 20814
vamoosebus.com

VISARTS

155 Gibbs Street
Rockville, MD 20850
visartscenter.org

WAREDACA BREWING COMPANY

4017 Damascus Road
Laytonsville, MD 20882
waredacabrewing.com

WASHINGTON, D.C. SOUTH ASIAN FILM FESTIVAL

501 Skidmore Boulevard
Gaithersburg, MD 20877
dcsaff.com

WINDRIDGE WINERY

15700 Darnestown Road
Darnestown, MD 20874
windridge.wine/

WOODEND SANCTUARY & MANSION

8940 Jones Mill Road
Chevy Chase, MD 20815
woodendsanctuary.org

WOODLAWN MANOR CULTURAL PARK & UNDERGROUND RAILROAD EXPERIENCE TRAIL

16501 Norwood Road
Sandy Spring, MD 20860
historyintheparks.org



~
**THE
ARTS
ARE
OURS.®**

The arts are essential.
The arts are for all of us.
All to create. All to enjoy.
All to share. All to cherish.

Montgomery County's home for
world class live music, art, and community.

STRATHMORE

STRATHMORE.ORG

5301 Tuckerman Lane, North Bethesda, MD

Adventure Awaits in Montgomery County's 400+ Parks!

Trails, lakes, nature centers, historic sites, ice rinks, tennis courts, playgrounds, gardens, and more.



DISCOVER
YOUR
HAPPY
PLACE



MontgomeryParks.org