

MONTGOMERY COUNTY, MD

MARYLAND'S CULTURAL CAPITAL™

32 **FREE THINGS TO DO**
ALONG THE RED LINE

34 **UNEARTH MOCO'S**
RURAL SIDE

46 **THE C&O CANAL**
EXPERIENCE

56 **EXPLORE GLOBAL**
CUISINE



**VISIT
MONTGOMERY**

VISITMONTGOMERY.COM

WORK HARD

play harder



TOPGOLF

HOST YOUR NEXT EVENT
WITH US.

topgolf.com/events

CONTENTS

FEATURED ARTICLES

- 2** Maryland's Cultural Capital
- 4** Getting Here and Around
- 8** You're Welcome Here
- 32** Free Things to Do Along the Red Line
- 34** Unearth MoCo's Rural Side
- 46** The C&O Canal Experience

EXPLORE COMMUNITIES

- 12** Bethesda/Chevy Chase
- 14** Silver Spring
- 16** Rockville
- 18** Wheaton/Kensington
- 20** Gaithersburg
- 22** Germantown
- 24** MidCounty
- 26** East County
- 28** UpCounty

FESTIVALS + EVENTS

- 10** Cherry Blossom Road Trip
- 30** What's Happening
- 31** Events for Every Season

ARTS + CULTURE

- 36** Experience the Arts
- 38** Performances + Entertainment
- 39** Arts + Entertainment Districts

SHOPPING

- 40** Shopper's Paradise

HISTORY + HERITAGE

- 42** Preserving History
- 44** Weekend Getaway for History Lovers
- 48** African American Heritage

INDOOR PURSUITS

- 49** Go Play Inside

SPORTS + OUTDOORS

- 50** Hole in One
- 52** Outdoor Adventures
- 53** How Does Your Garden Grow?
- 54** Nature's Finest

MARYLAND FLAVOR

- 56** MoCo Eats
- 60** Tastemakers Trail

GATHER + GREET

- 62** Distinctly Different
- 64** Meet + Greet

66 TRAVEL DIRECTORY



 **VISIT
MONTGOMERY**
VISITMONTGOMERY.COM

Visit Montgomery, MD is the official destination marketing organization for Montgomery County, Maryland. Whether you're traveling to the metropolitan area for groups, meetings, business or leisure, we're here to bring you helpful information about our area, no matter the season. Visit [Visitmontgomery.com](https://www.visitmontgomery.com), email info@visitmontgomery.com, follow @VisitMoCo on social media, or call 240-641-6750 for more information.

Photo Credits: Adam Brockett, Stan Barouh, Ken Fletcher, Paul Graunke, Peter Guthrie, Sam Kittner, Montgomery County Parks Staff, Montgomery Recreation Staff, City of Rockville Staff, City of Gaithersburg Staff, Jim Morris, Andrew Murdock, Ken Stanek Photography, Clark Day Photography, Victoria Pickering, Strathmore, Jim Saah, Marilyn Sklar, Marilyn Stone, John Zawitoski, Shutterstock, Ricky Of The World, Guillermo Olaizola, Nicole S. Glass, Lissandra Melo, Shadowland Adventures Staff, JC Silvey, Jack Goras, KRR Photography, Bethesda Urban Partnership, Federal Realty Investment Trust, Simon Properties, Peterson Companies, VisArts, C&O Canal Trust, Iwan Baan, @sstephkoutss, @samuelrobby and others.

MARYLAND'S CULTURAL CAPITAL

Montgomery County, MD Offers One of the Most Diverse
Collections of Communities in the United States



From the banks of the Potomac to the nation's capital, through thriving urban centers and into our Agricultural Reserve, Montgomery County unites residents and visitors through experiences that foster connections and inspire creativity.

Step into a world where diversity and inclusion are woven into the fabric of its communities. A place where cultural heritage sites enchant lifelong learners through a rich connection to national and state history. Where a wide variety of globally inspired culinary options fit every taste. And where all visitors are welcomed with open arms. With such cultural delights, rich history, and international communities, this is truly Maryland's Cultural Capital.

The variety of experiences that await you is just as diverse. Traverse national and state parks, cycle along safe and friendly trails, or revel in an agritourism brewery hop. Satisfy refined tastes at upscale boutiques and culinary venues with vibrant global zest. Broaden your horizons via approachable urban events and elite experiences at one-of-a-kind venues. Celebrate our renowned hospitality and entrepreneurial spirit.

One of "America's Best Places to Live" is also the region that embodies inclusion, where connected communities of blended cultures intertwine. Explore Montgomery County and encounter its warm embrace—with classic Maryland flavor.

► DOWNTOWN SILVER SPRING ARTS & ENTERTAINMENT DISTRICT



PACK YOUR BAGS. LEAVE YOUR ROUTINE.

From compelling entertainment at one-of-a-kind venues to outdoor experiences and from upscale boutiques to approachable urban encounters, Montgomery County hosts unexpected connections at every turn.

Geographically, Montgomery County is bordered by the Potomac River to the west (and Virginia beyond) and Washington, D.C. to the south. Frederick is to the north, Baltimore is northeast, and Annapolis is directly east. Culturally, we're at the center of it all.

Turn the page to learn all the ways to get to and around the county!

Approximate Distance to the National Mall in Washington, DC from:

Bethesda	8 miles	27 min
Silver Spring	8 miles	25 min
Potomac	14 miles	27 min
Rockville	18 miles	30 min
Gaithersburg	22 miles	35 min
Germantown	31 miles	40 min
Clarksburg	36 miles	40 min

Approximate Distance of Surrounding Cities to Rockville:

Frederick	29 miles	34 min
Baltimore	32 miles	55 min
Annapolis	44 miles	55 min
Richmond	122 miles	2 hr, 20 min
Philadelphia	145 miles	2 hr, 35 min
Pittsburgh	225 miles	3 hr, 52 min
New York City	230 miles	4 hr, 5 min

Approximate Distance of Surrounding Airports to Rockville:

Baltimore/Washington International Thurgood Marshall Airport (BWI)	36 miles	40 min
Ronald Reagan Washington National Airport (DCA)	23 miles	44 min
Dulles International Airport (IAD)	29 miles	50 min

Travel times based on average traffic volume.



GETTING HERE

Whether you're embarking on an epic road trip or flying in via one of the area's three major airports, you'll find that Montgomery County is a destination that welcomes all visitors with open arms.

We are perfectly situated in the center of three major airports—**Ronald Reagan Washington National Airport** (DCA), **Washington Dulles International Airport** (IAD), and **Baltimore/Washington Thurgood Marshall International Airport** (BWI). Flights and connections arrive and depart around the clock.

If you prefer to arrive by train, **Amtrak** services **BWI Airport** and **Union Station** in Washington, DC. Take **Ride On Bus 201** from BWI or **MetroRail's Red Line** from Union Station. Speaking of Metro, you can hop on anywhere in the Washington metro area and make your way to Montgomery County (see map on page 6).

In the age of GPS, you might not need directions by car. But for travelers who

stand by their road atlases, we've included them here: From points northwest, take I-70 East to I-270 South. From points northeast, take I-95 South to I-495 towards Virginia and then I-270 North, or I-95 South to MD 200 West. (MD 200 is an all-electronic toll road that only accepts the E-Z Pass for payment. If you do not have an E-Z Pass, you will receive a bill in the mail at a slightly higher rate.) From points south, take I-95 North to I-495 towards Baltimore and then I-270 North.

And if you like the open road but prefer not to be behind the wheel, consider taking a bus! **Vamoose Bus** operates to and from New York City from downtown Bethesda.

Got an entire group coming with you? **RMA Worldwide**, **GOGO Charters**, **Ally Charter Bus**, **National Charter Bus**, and **DC Charter Bus Company** provide private transportation services of all sizes.



GETTING AROUND

Once you're in Montgomery County, there are plenty of ways to get around. If you've brought your own car, you're all set! You should be aware, however, that Maryland is a hands-free state. You are prohibited from texting or using a cell phone while driving. The State of Maryland also has a rigorous speed camera program, so pay attention to the posted speed signs and drive carefully.

If you're relying on other options, we've got you covered. **Barwood Taxi** has served Montgomery County since 1960, and features Verifone technology with credit card payment and video onboard. Based in Rockville, **RMA Worldwide Chauffeured Transportation** has the largest fleet of sedans, SUV's, limousines, and minibuses in the area. You can also explore every part of the county with a rideshare from **Uber** or **Lyft**.

There are 13 Red Line Metro stations that serve Montgomery County (see map on page 6). Many of our neighborhoods are accessible via **Metro**, and there is lots to do without ever leaving the Red Line! (Check out

Free Things to Do on the Red Line on page 32.)

Each Metro station also offers transfers to Metro buses and Ride On buses. Between the two, you can access most neighborhoods in the county. The **Washington Metro Area Transit Authority (WMA-TA)** has a free online trip planner that can help you navigate by rail, bus, or a combination of the two.

If you're feeling active, the **Capital Bikeshare** system offers bicycles for rent at more than 300 stations in the metro area. You can also explore by e-bike with rentals from **Pedego** in Bethesda.



➤ METRORAIL

ACCESSIBILITY

According to the Centers for Disease Control and Prevention, 27.2% of adult Americans are living with disabilities. Montgomery County has prioritized mobility access for all, resulting in many options for getting around. The nonprofit Bethesda Transportation Solutions has compiled a guide of regional, state, and local resources, available at www.bethesdatransit.org/bethesda/accessibility.



➤ PEDEGO BIKES ON THE C&O CANAL

METRORAIL SYSTEM MAP



Legend

- RD** Red Line • Glenmont / Shady Grove
- OR** Orange Line • New Carrollton / Vienna
- OR+** Orange Line • Vienna / Downtown Largo
- BL** Blue Line • Franconia-Springfield / Downtown Largo
- GR** Green Line • Branch Ave / Greenbelt
- YL** Yellow Line • Huntington / Mt Vernon Sq
- SV** Silver Line • Ashburn / Downtown Largo

Station Features

- P** Parking
- H** Hospital
- A** Airport

Connecting Rail Systems

- AMTRAK**
- VRE**
- MARC**



Station in Service



Future Station



Rush-Only Service

Monday-Friday

6 a.m. - 9 a.m.

3 p.m. - 6 p.m.

wmata.com
Information: 202-637-7000 | TTY: 202-962-2033
Metro Transit Police: 202-962-2121 | Text: MYMTDP (696873)



UNITED STATES CAPITOL ADVENTURE STARTS AT EVERY STOP.

EXPLORE DC WITH A SMARTTRIP® CARD OR WEEKLY PASS.
VISIT WMATA.COM



YOU'RE WELCOME HERE

One of “America’s Best Places to Live” is also the place that embodies inclusion, where connected communities of blended cultures intertwine. Montgomery County is a prime destination for all types of people, filled with welcoming residents and friendly faces.



► GREAT FALLS MARYLAND



► KITES OVER CLARKSBURG

DIVERSE CULTURES

One of the best things about Montgomery County is the wide variety of cultural communities that connect and blend throughout the region.

According to *WalletHub*, the County is one of the most diverse communities in the country. Germantown, Gaithersburg, Silver Spring, and Rockville all rank in the site's "Top 10 Most Diverse Communities in the U.S."

To speak to this claim, consider the facts that 33% of Montgomery County's population is foreign-born and 43.7% of the population speaks at least one language other than English at home.

PRIORITY ON HUMAN RIGHTS

The people and organizations in Montgomery County place a high priority on human rights and equality. Both Rockville and Gaithersburg have achieved perfect scores in the Municipality Equality Index (MEI), according to the Human Rights Campaign (HRC).

In addition, the County ranks high where Black residents are prospering in the "Black Progress Index" by the Brookings Institution. This study examines the social factors that influence Black well-being.


A GREAT PLACE TO LIVE

All of these facts show what a great place Montgomery County is to live. The region has been recognized at the national level not only for its diversity and inclusion but also for the well-rounded selection of activities, excellent

education, and supportive atmosphere.

In 2023, Silver Spring was ranked #3 in *Fortune* magazine's "Best Places to Live for Families." Also, Rockville was ranked 20th in *Money Magazine*'s "50 Best Places to Live in the U.S. in 2022."





TAKE THE ULTIMATE CHERRY BLOSSOM ROAD TRIP AROUND MONTGOMERY COUNTY

The blooming of Washington, DC's famous cherry blossoms are the region's first sign that winter is over and spring is here to stay. If you're looking to venture beyond the Tidal Basin, then this ultimate cherry blossom road trip is a perfect opportunity to explore Montgomery County, Maryland. So, load your kids in the car, turn on your favorite tunes, roll down your windows, and most of all... have fun!

KENWOOD NEIGHBORHOOD

**Kennedy Drive,
Bethesda, MD**

Visiting the cherry trees in the Kenwood neighborhood near Bethesda and Chevy Chase is considered a less crowded alternative to viewing the Tidal Basin's trees. In the early 1930s and '40s, a local developer planted cherry trees as a way to promote the neighborhood to potential home buyers. Now, more than 1,200 trees grace the neighborhood, bearing hundreds of thousands of beautiful, tiny pink and white flowers that bloom during the spring season. The best cherry blossom viewing can be found along Kennedy Drive, Dorset Avenue, and Kenwood Avenue.

GLENVIEW MANSION AT THE CIVIC CENTER PARK

**603 Edmonston Drive,
Rockville, MD**

Enjoy a picnic under a Yoshino cherry tree with a view of Glenview Mansion at the Civic Center Park in Rockville. There is also a gorgeous cluster of Kwanzan cherry trees that line the driveway when you arrive at the park. According to the City of Rockville's horticulturalist, Kwanzan trees bloom a week or two after their Yoshino cousins.

BROOKSIDE GARDENS

**1800 Glenallan Avenue,
Wheaton, MD**

You can view more than 300 cherry blossom trees in Montgomery County's parks and get a jump start on spring festivities. Brookside Gardens has 26 cherry trees that are located in the Gude Garden along the HeartSmart Trail and near the pond. There are also trees near the Conservatory. Like clockwork, the cherry trees reach peak blooms on or around April 1.

TAKOMA PARK NEIGHBORHOOD

Takoma Park, MD

Cherry trees are sprinkled throughout historic Takoma Park. For the biggest flower impact, turn down Flower Avenue, between Jackson and Garland Avenues, and then turn down Boyd Avenue, between Jackson and Lincoln Avenues. Afterward, be sure to explore some of the local shops along Main Street Takoma.



Relax while working or just work on relaxing.

Home2 has everything government travelers need to feel at home on the road.



Home2 Amenities Include:

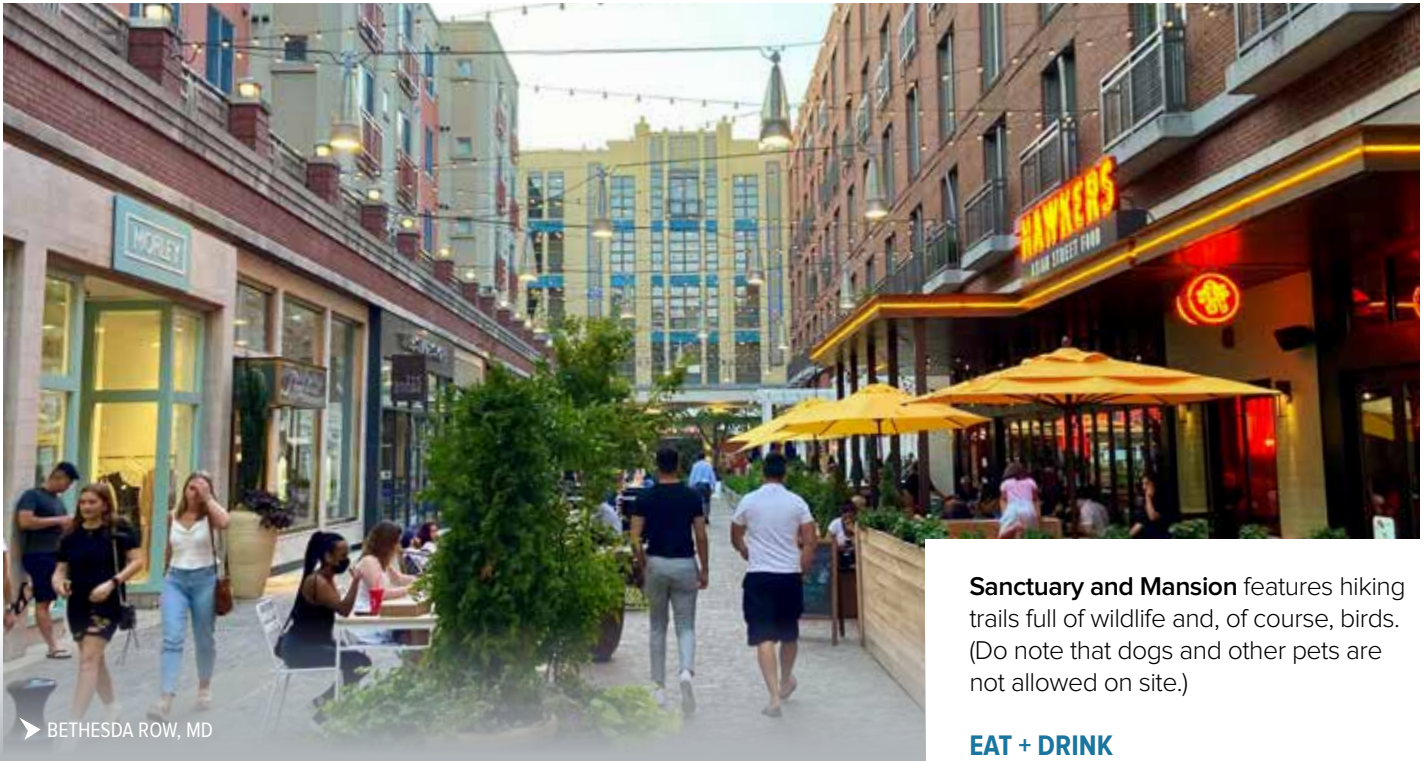
Stylish studio & one-bedroom suites with kitchen | Free Wi-Fi | Free breakfast at the Inspired Table™
Spin2Cycle laundry & fitness room | Outdoor lounge areas* | Pet-friendly | Saline pools
Coffee and tea served 24/7 | Relax & connect in our Oasis | The Home2 Guarantee

* Available at most properties



HOME2 SUITES BY HILTON SILVER SPRING
1701 Elton Road, Silver Spring, Maryland, 20903
301-965-8200





BETHESDA ROW, MD

Sanctuary and Mansion features hiking trails full of wildlife and, of course, birds. (Do note that dogs and other pets are not allowed on site.)

EAT + DRINK

Dine at the popular **Gringos & Mariachi**, try a classic French entrée at **Mon Ami Gabi**, or indulge in your sweet tooth at the world-famous **Georgetown Cupcakes**. Or try all three and create your own culinary tour in Bethesda.

SHOP + FIND

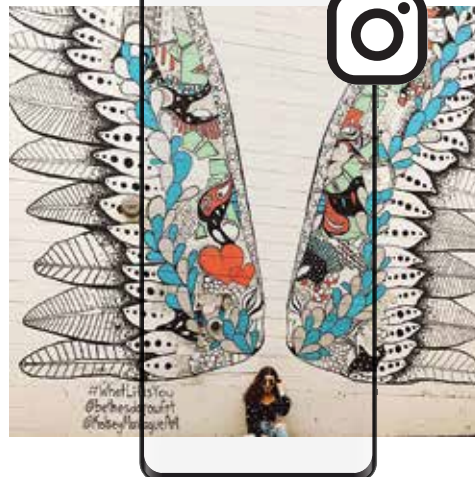
Downtown Bethesda is home to numerous fashion boutiques, home design shops, art galleries, and tech stores. Get ready for your night out with the perfect outfit from **Anthropologie** at **Bethesda Row**. Take a trip to Chevy Chase for a luxury shopping spree at **Saks 5th Avenue**, **Tiffany and Co.**, and **Bloomingdale's**.

BETHESDA/ CHEVY CHASE

For some of the area's best entertainment, look no further than Bethesda, one of three Arts & Entertainment Districts in Montgomery County. Hop on and off the **Bethesda Circulator** on your way to and from shops, theatres, restaurants, parking garages, and the Metro. All your favorite downtown Bethesda destinations are on or close to the route!

SEE + DO

See a world-class performance at **Round House Theatre** or stop by the **Bethesda Blues and Jazz Supper Club** for dinner and a show. Looking to get outdoors? The **Capital City Crescent Trail** connects cyclists, walkers, and joggers from Bethesda to Silver Spring and into Georgetown, Washington, D.C. The **Audubon Naturalist Society Woodend**



“What Lifts You” Mural in Bethesda Row

Give yourself a pair of wings and see the likes on your post take flight when you visit artist Kelsey Montague's larger-than-life mural. Located on Hagar Lane, one block from Bethesda Row.



Bethesda

A world in one neighborhood.



Enjoy great restaurants, fashionable boutiques, home décor shops, art galleries and live theatre in downtown Bethesda. Outdoor festivals, cultural events and evening entertainment make downtown Bethesda your complete community destination.

FOR A CLOSER LOOK, VISIT BETHESDA.ORG.

Bethesda
URBAN PARTNERSHIP



ARTS &
ENTERTAINMENT
DISTRICT

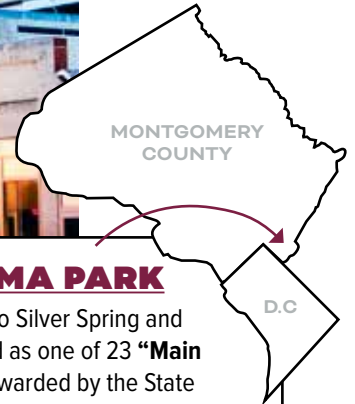


TRANSPORTATION
SOLUTIONS





➤ AFI SILVER THEATRE & CULTURAL CENTER



TAKOMA PARK

Neighbor to Silver Spring and designated as one of 23 “**Main Streets**” awarded by the State of Maryland, Takoma Park offers a small-town spirit with urban sophistication. Listen to live jazz music and enjoy original works of art. Shop year-round at the **Farmers Market** and check out boutiques for unique clothing and gifts. If you’re visiting in spring or fall, check out the community’s annual festival, the **Takoma Park Street Festival** in October.

SILVER SPRING

As a state-designated Arts and Entertainment District, Silver Spring is your go-to entertainment spot in Montgomery County. The highly walkable downtown area has tons of options for a night out on the town.

SEE + DO

Rock out to live music at **The Fillmore** or see the latest independent films at the **American Film Institute (AFI) Silver Theatre and Cultural Center**, home to the international film festival AFI Docs. For a dose of nature, head to **Acorn**

Park in downtown Silver Spring. This area is believed to be the site of the eponymous “silver spring” that inspired the community’s name. Or take a drive to **Sligo Stream Valley Park**, which has paved biking trails along the creek and lots of playgrounds for the kids.

EAT + DRINK

Find the brew for you, whether you need a caffeine kick from **Kaldi’s Social House** or want to wind down with a local beer from **Silver Branch Brewing Co.** Enjoy a contemporary twist on seasonally

inspired dishes at **All Set Bar + Kitchen**, savor a classic cocktail at **J. Hollinger’s Waterman’s Chophouse**, or relax at **Zinnia’s** popular outdoor garden.

SHOP + FIND

Shopping opportunities are abundant, including the popular **Ellsworth Place** and **Downtown Silver Spring** center.



➤ TAKOMA PARK FARMERS MARKET





SILVER SPRING ARTS & ENTERTAINMENT DISTRICT



Visit SilverSpringDowntown.com to Explore

- Delicious Dining & Vibrant Nightlife
- Free Things to Do with Your Kids
- Live Music, Film, Art
- Shopping & Attractions



With over 600 festivals and events each year, Silver Spring always has something amazing to do or experience.





➤ ROCKVILLE TOWN SQUARE



➤ VISARTS

FUN FACT

The REM song "Don't Go Back to Rockville" was written about Ingrid Schorr, who attended college with a band member and describes a town that isn't quite like the real one.

ROCKVILLE

NORTH BETHESDA / POTOMAC

There's so much to do in Rockville, you could spend your entire weekend exploring this one community! Anything you could want to do, eat, or buy can be found in this bustling urban area.

SEE + DO

Rockville was once home to F. Scott Fitzgerald, author of *The Great Gatsby*, and his wife, Zelda. Fittingly, the community's **F. Scott Fitzgerald Theatre** is a vibrant, local theatre dedicated to the performing arts. In addition to the theater, **Rockville Town Center** has free concerts and outdoor movies in warm weather and an outdoor ice rink when temperatures drop. To exercise your creative talent, visit **The Clay CoOp** for pottery classes, community events, and a gallery experience, or paint with your pals at **VisArts**. Spend an enlightening evening in North Bethesda at **The Music Center and Mansion at Strathmore**.

EAT + DRINK

A world of ethnic cuisine is available, with Lebanese, Chinese, Italian, Cuban, Greek, and Japanese restaurants to satisfy your taste buds. Enjoy modern

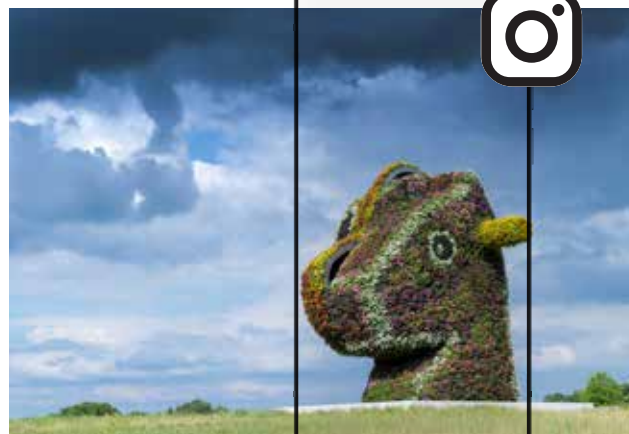
Pan-African cuisine at **Eko House** or savor the vibrant colors and bold flavors of Bangkok at **Thai Chef**. Head over to Pike & Rose for a Brazilian feast at **Fogo de Chao** or **Pinstripes** for a game of bowling or bocce with your meal.

SHOP + FIND

Located at the crossroads of Rockville Pike, Montrose Parkway, and Old Georgetown Road, **Pike & Rose** is a charming neighborhood featuring many well-known retailers and dining establishments. From open air boutiques to live music, you're sure to find an enjoyable experience.



➤ THAI CHEF RESTAURANT



OUTDOOR SCULPTURES AT THE GLENSTONE MUSEUM

As one of Montgomery County's most colorful sculptures, "Split-Rocker" by Jeff Koons looks great from every angle.



explore ROCKVILLE

MARYLAND

A VIBRANT CITY WITH *SOMETHING*
FOR *EVERYONE*

 *History & Culture*

 *Arts & Entertainment*

 *Dining & Nightlife*



SCAN THE CODE
WITH YOUR PHONE'S CAMERA
TO LEARN MORE



WWW.EXPLOREROCKVILLE.ORG

@EXPLOREROCKVILLE





FUN FACT

Wheaton is one of the three Maryland-designated Arts + Entertainment districts in Montgomery County.

➤ BROOKSIDE GARDENS

WHEATON / KENSINGTON

If you arrive via Metro to the Wheaton station, you'll take the longest escalator in the Western Hemisphere to get above ground. While a 508-foot escalator might not be an attraction you'd travel to see, there's plenty here to keep you busy.

SEE + DO

The award-winning botanical gardens at **Brookside Gardens** contain 50 acres of public garden displays, including two conservatories for year-round enjoy-

ment. In the summer, the **Wings of Fancy** exhibit features hundreds of butterflies from around the world. During the winter holidays, the annual **Garden of Lights** is a must-see, along with the light display at the **Washington D.C. Temple** in Kensington. Any day is perfect for a self-guided walking tour around the **Wheaton Urban District** to discover a wide array of Instagram-worthy murals and sculptures.

EAT + DRINK

If you're looking to span the globe



➤ WASHINGTON D.C. TEMPLE

without leaving town, explore the diverse palate of Wheaton through authentic restaurants like **Los Chorros**, **Gisele's Creole Cuisine**, and **Pho Kobe**. For an epic pizza road trip, be sure to visit **Stained Glass Pub** in Glenmont, **Manny & Olga's Pizza** in Wheaton, and **Frankly Pizza** in downtown Kensington.

SHOP + FIND

Take a step back in time through a shopping experience at **Kensington's Antique Row**. The variety of **antique shops** and **vintage bookstores** perfectly exemplify why the area is known as the DC metro area's largest and oldest antique center. Nearby, the historic and quaint **Noyles Library for Young Children** is a magical, sun-filled spot for the littlest book lovers. Afterwards, head over to **Westfield Wheaton** to return to the present with popular retail stores and a luxury movie experience.



➤ KENSINGTON'S ANTIQUE ROW



Positively Bethesda!



canopy™
BY HILTON

WASHINGTON DC | BETHESDA NORTH

940 Rose Avenue | North Bethesda, MD 20852
Tel: +1-301-882-9400 | canopybethesdanorth.com

At Canopy by Hilton Washington DC Bethesda North,
we've got you covered.

- A positively local stay in North Bethesda, MD's Pike & Rose community
- Complimentary Canopy Bikes or a quick walk to eateries, shops and entertainment
- Just Right rooms and suites with Canopy-exclusive beds, free Wi-Fi and surprising extras
- Dining and drinks at Hello Betty, a vibrant and playful space, with a 60-foot outdoor Boat Bar.
- On-site spa and salon plus a complimentary 24-hour fitness center
- 6,500 sq. ft. of inspired event space including a sunlit ballroom and rooftop deck



➤ GAITHERSBURG COMMUNITY MUSEUM

GAITHERSBURG

Gaithersburg is a close-knit community that supports local farmers, artisans, and artists. The diversity of its residents contributes to the wide variety of global cuisine found here.

SEE + DO

Find farm-fresh produce and other items at the **Thursday Farmers Market** at Casey Community Center and the **Saturday Main Street Market** in Kentlands. Be sure to make a stop at **BlackRock Center for the Arts** and **Gaithersburg Concert Pavilion** for outdoor summer concerts and family-friendly performances. For plays, local art, and other performances throughout the year, visit **The Arts Barn**. More works by local and regional artists are displayed at the **Activity Center at Bohrer Park** and **Kentlands Mansion**. In May, the **Gaithersburg Book Festival** hosts author presentations and writing workshops. If you're into science and history, the **Gaithersburg Latitude Observatory** is one of six International Latitude Observatories and was designated a National Historic Landmark.

EAT + DRINK

The **Kentlands** neighborhood is home to a variety of cuisines, including Thai, Greek, Middle Eastern, Vietnamese,

Italian, Mexican, and of course, American. From **Charley Prime Foods** to **True Food Kitchen** and everything in between, **rio's** lakefront offers a wide selection of restaurant options for every taste and style.

SHOP + FIND

Take a laid-back stroll through the shops along **rio's** lakefront, including **Locally Crafted** and other popular stores. Follow the boardwalk to take a ride on the carousel and relax at the fire lounge with views of the lakefront. For an added adventure, try **paddle boating** for an up-close view of the fountains located throughout the lake.



➤ GAITHERSBURG BOOK FESTIVAL



THE SWINGS AT THE MONTGOMERY COUNTY AGRICULTURAL FAIR

If you're in the area in August, the swings (and let's be real, most any of the rides) at the Montgomery County Agricultural Fair make for a great shot.



Arts Friendly

GAITHERSBURG

As Mayor Jud Ashman likes to say, “Gaithersburg is the greatest City in the world!” With robust arts and culture, the City surprises many with the vibrancy and variety of its offerings.

If you’re a book lover, spend a day in May at the **Gaithersburg Book Festival**. Founded in 2010, the Festival has become one of the nation’s top literary events. And don’t miss **SummerFest** and **Oktoberfest**, great outdoor festivals that feature strolling entertainers, local bands, interactive arts, and lots of family fun.

Enjoy theater, magic, comedy, music, films and more at **Arts on the Green**, Gaithersburg’s home for the performing and visual arts. Located in the heart of Kentlands, the historic **Arts Barn** and elegant **Kentlands Mansion** offer a lively schedule of events, performances, workshops, and classes for all ages.

Explore local history at the **Gaithersburg Community Museum**, located along the railroad tracks in the restored 1884 B&O Train Station in charming Olde Towne. Little ones will love the interactive exhibits, fun programs like StoryTime Station, and the Museum’s rolling stock, including a 1918 steam locomotive. And don’t miss our skywatching programs at the nearby historic **Latitude Observatory** where the whole family can explore the universe.

Five City-owned galleries showcase emerging and professional artists from around the region. Thanks to a robust arts community, visual artists have many opportunities to exhibit, sell, and network in Gaithersburg.

Every summer, residents pull out coolers and picnic blankets and head over to the **City Hall Concert Pavilion** for **Evenings in Olde Towne**, enjoying live music by some of the best bands in the area. Don’t be surprised if you see your neighbors dancing the night away.

The calendar year wraps up with the magical **Winter Lights Festival** at Seneca Creek State Park, a 3.5 mile drive through an illuminated wonderland. It’s been going on for nearly a quarter century, and has become a holiday tradition for many in the DMV.

With so much to do in only 10 square miles, Gaithersburg is bursting at the seams with fun. Stay on top of it all at gaithersburgMD.gov or on Facebook, Twitter, and Instagram @GburgMD.



GAITHERSBURG IS HOME TO

6 VISUAL ARTS CLUBS

9 GALLERIES

16 ART STUDIOS

32 PUBLIC ART
INSTALLATIONS

MONTGOMERY PLAYHOUSE
Maryland’s Oldest Community
Theater Company

**ARTS ON THE GREEN: ARTS BARN
& KENTLANDS MANSION**

**GAITHERSBURG COMMUNITY
MUSEUM & OBSERVATORY**

GAITHERSBURG BOOK FESTIVAL

WINTER LIGHTS FESTIVAL

OKTOBERFEST & SUMMERFEST

SUMMER CONCERT SERIES

OUTDOOR SUMMER MOVIES

JUBILATION DAY GOSPEL FESTIVAL



➤ SOUTH GERMANTOWN DRIVING RANGE



➤ BLACKROCK CENTER FOR THE ARTS

GERMANTOWN

If you like to stay active, Germantown is the place to be. From organized sports to outdoor adventures, it's hard to be bored here if you like to keep moving.

SEE + DO

With sports options ranging from the **Maryland SoccerPlex & Discovery Sports Center** to an indoor pool, the **South Germantown Recreational Park** is sure to fill up your day with adventure

and fun. Or you can head to **Black Hill Regional Park** and spend the day hiking and kayaking. Head to **Hoyles Mill Conservation Park** for a secluded, undeveloped park with scenic trails. **Seneca Creek State Park**, located between Germantown and Gaithersburg, offers 6,300 acres of forest and farmlands where visitors can hunt, fish, and hike.

FUN FACT

The Maryland SoccerPlex is a nonprofit and has 21 natural grass fields, 3 artificial turf fields, and 8 indoor convertible basketball/volleyball courts.

EAT + DRINK

For group and family fun, plan a visit to **Top Golf Germantown**. From beginners to regulars, everyone can enjoy the game and some great food.

SHOP + FIND

For a different outdoor experience, visit **Butler's Orchard** to pick-your-own from May to December. Known for their abundant strawberries, they also have a variety of fruits, vegetables, pumpkins, and even Christmas trees available seasonally. The **Lancaster County Dutch Market** is a collection of vendors born and raised in the central Pennsylvania area that has been serving Germantown for 20 years, homemade foods, candies, groceries, and furniture. The **Lodge at Little Seneca Creek** is a beautiful, rustic building with vast green spaces maintained by Montgomery County Parks that can be rented for weddings and other events.



➤ BUTLER'S ORCHARD



Work Well, Eat Well & Rest Well

AT OUR GERMANTOWN, MD HOTEL

Free



WiFi



Parking



Breakfast



Business Center



Fitness Center



Swimming Pool

This Germantown, Maryland hotel offers travelers, whether business or leisure, everything they need for a productive stay. Easily venture to D.C. with Shady Grove Metro Center, 5 miles away or local attractions Black Rock Center for the Arts and Maryland SportsPlex. We're also about 30 miles from DCA, IAD and BWI Airports. Within walking distance to several restaurants.

- ▶ Rooms, Studios and Whirlpool Suites Available
- ▶ Microwave and Mini-Fridge
- ▶ 533 Sq. Ft. of Meeting Space
- ▶ Only 1 Exit from Clarksburg Premium Outlets

Fairfield[®]
BY MARRIOTT

Marriott.com/WASGE

Fairfield Inn & Suites
Germantown Gaithersburg

20025 Century Blvd, Germantown, MD 20874
P. (301) 916-0750. F. (301) 916-0751



➤ LONE OAK FARM BREWERY



➤ ADVENTURE PARK AT SANDY SPRING



landscape, and the Quaker experience.

The **Agricultural History Farm Park**

includes the Magruder-Bussard Farmstead, a preserved example of a Montgomery County farmstead at the turn of the 20th Century.

For adventurous visitors, the **Adventure Park at Sandy Spring** (located next door to Woodlawn Manor) features 15 different aerial forest adventures. And don't miss the diverse and popular productions at the award-winning **Olney Theatre Center**.

EAT + DRINK

Kick back and enjoy **local** brews at **Lone Oak Farm Brewery**, where you can unwind in the country atmosphere while enjoying small plates, stone-fired pizzas, and more. To extend your trip and try a few more flavors, head to **Waredaca Brewing Company** or **Elder Pine Brewing and Blending**.

SHOP + FIND

Continuing the historical theme, find old and new treasures you didn't even know you wanted at the **Olney Antique Village**. If you are looking for the perfect gift, **Sandy Spring Museum** offers an extensive gift shop with goods created by local artists, unique exhibits, community events, and the popular **History Happy Hours**.

MIDCOUNTRY

OLNEY / SANDY SPRING / BROOKEVILLE / DERWOOD

Mid County encompasses several tight-knit communities with deep roots and open arms. Here, the cultural significance of historic Maryland meets the modern-day culture of award-winning performances.

SEE + DO

History buffs will love spending time at the **Woodlawn Manor Cultural Park** in Sandy Spring. The museum features multimedia exhibits highlighting the Underground Railroad, the agricultural



➤ WOODLAWN MANOR CULTURAL PARK



AFI Silver
THEATRE and CULTURAL CENTER

One of the world's premier film centers

AFI Silver Theatre showcases the very best in American and international cinema. Featuring a year-round mix of dynamic programming, including new art-house films, classic retrospectives, festivals, and unique live special events.

Just north of Washington, DC

8633 Colesville Road
Silver Spring, MD
Red Line to Silver Spring

AFI.com/Silver

AFISilverTheatre AFISilver AFISilverTheatre



outdoor garden terrace
contemporary ballroom
full service catering
ideal location
marriott rewards

**WHEN YOU
CELEBRATE
LIFE,
CELEBRATE
HERE**

weddings
bar/bat mitzvahs
special occasions

COURTYARD®
BY MARRIOTT
Bethesda Chevy Chase

5520 Wisconsin Avenue
Chevy Chase, MD 20815
Marriott.com/wasvy
information@cychevychase.com 301 656 1500

UNDERDOGS
STORIES OF UPSTARTS, OUTSIDERS, AND EMIGRÉS
2023-24 SEASON

THE BROTHERS PARANORMAL SEPT 27-OCT 29	Fiddler on the Roof NOV 8-DEC 31
KEN LUDWIG'S LEND ME A SOPRANO FEB 7-MAR 10	Avaaz آواز MAR 6-APRIL 7
Islander a new musical APRIL 11-28	LONG WAY DOWN MAY 22- JUNE 23
BEAUTIFUL The Carole King Musical JULY 3-AUG 25	OLNEY THEATRE CENTER

Tickets on sale now! OlneyTheatre.org



**Take a Self-Guided Artisan Tour Along
the Montgomery County Countryside**

The Countryside Artisans represent a select group of accomplished visual, sculptural, and textile artists living and working in both historic and rural areas of Montgomery, Howard, and Frederick Counties of Maryland. Each studio is located within a 30 mile radius of Sugarloaf Mountain, a highlight of Montgomery County's Agricultural Reserve, and offers an alternative to in-store shopping year round. Each April, October, and December, the Countryside Artisans jointly open their galleries and studios for special art tours.

CountrysideArtisans.com



➤ NATIONAL CAPITAL TROLLEY MUSEUM

FUN FACT

In colonial times, Burtonsville was referred to as the “Patuxent Hundred” and later the Eastern Branch Hundred, a community comprising about 100 inhabitants.

EAST COUNTY

BURTONSVILLE / COLESVILLE

East County is an outdoors enthusiast’s paradise. Even in the more developed areas, city parks dot the neighborhoods and provide much-appreciated green space. But the impressive natural beauty of the Patuxent River is hard to beat.

SEE + DO

At the **Rocky Gorge Reservoir**, keep an eye out for heron, deer, and other wild-

life while you hike. The **Patuxent River** can be fished year-round and is an angler’s dream come true. Established in 1959, **Brighton Dam’s Azalea Garden** located at the **Triadelphia Reservoir** is home to over 22,000 azalea bushes over five acres in a hardwood forest. Kousa dogwood trees were added in the 1990’s and the garden is also home to Montgomery County’s champion fringe tree. For another type of outdoor

activity, check out the **National Capital Trolley Museum** in Colesville. Some of their 17 streetcars take you on a mile-long ride through the woods while you learn about the history, mission, and development of trolleys.

EAT + DRINK

Experience the authentic flavors of grandma’s kitchen at **Cuba de Ayer** with fan favorites like ropa vieja (shredded beef in a Cuban tomato sauce) and tres leches cake. Watching a game? Get a few friends together and head over to **The Greene Turtle Sports Bar & Grille** for brews and bar bites.

SHOP + FIND

Take a trip to the year-round market at **Heyser Farms** for fresh fruit and vegetables, sweet cider, baked goods, flowers and mulch, local milk, eggs, bread, ice cream, honey, and jams. In Burtonsville, **Meadows Farms Nurseries & Landscape** is the perfect place to pick up a new bird feeder or outdoor gift item.



➤ PATUXENT RIVER

MONTGOMERY PARKS

Adventure awaits in Montgomery County's **400+ parks!**

Enjoy the outdoors at our **botanical gardens** and **nature centers**. See history come alive at sites like **Josiah Henson Museum & Park** and **Woodlawn Museum**. Explore beautiful scenery along our **265+ miles of paved and natural-surface trails**. Great for biking or hiking. Or, get active on our **lakes**, at our **ice rinks**, on **tennis courts and more!**

Living History
Family Fun
Outdoor
Recreation



MontgomeryParks.org



➤ SUGARLOAF MOUNTAIN VINEYARDS

UPCOUNTY

**POOLESVILLE / CLARKSBURG /
DAMASCUS / LAYTONSVILLE**

Rustic experiences abound in UpCounty, where Montgomery County's rural side comes to life. (Read more, including information on the County's newest hot spot—**The Crossvines**—on page 35.) Along with local food and wares, the area is home to nature preserves, animal and avian centers, and historic farms.

SEE + DO

Architect Frank Lloyd Wright once had grand plans for an elaborate mountain-top observatory on top of **Sugarloaf Mountain**, but those plans never materialized. To understand his desire, leisure hikers as well as more serious athletes can trek the 1,000 feet to the top and take in the farmland view. The biking and hiking is also prime along the **C&O Canal Towpath**, where you can stay overnight in one of the Civil War-era lockhouses. On a clear day in mid-July, wander through 30 acres of vibrant sunflowers at the **Mckee-Beshers Wildlife Management Area**.

EAT + DRINK

The beverages are on point in UpCounty! Sip on some of Maryland's most decorated wines at the **Sugarloaf Mountain Vineyards**, where you can listen to live music, snack on bites from food trucks, or schedule a winery tour. Head to the family-owned **Windridge Vineyards** for carefully-selected wines based on a unique mix of geology and microclimate. Enjoy a pint and a taste of Montgomery County's local craft beer scene on a

working horse farm at **Waredaca Brewing Company**. Participate in a farm-to-table dinner at **Calleva Farm** or enjoy a barbeque feast during "Fridays at the Farm" at **Smokey Glen Farm**. For a truly unique pint, head to **Elder Pine Brewing and Blending** for a modern twist on a classic style.

SHOP + FIND

The eclectic retail experiences in UpCounty make for a shopping adventure. Stroll around Poolesville and take in the charming shops and ambiance. Hunt for bargains at **The Clarksburg Premium Outlets**. Discover perfectly curated local treasures at **The Family Room**. Or create your own driving experience between the **Countryside Artisans'** studios during their tours held each year and take home locally-made art.



SUNFLOWERS AT MCKEE-BESHERS WILDLIFE MANAGEMENT AREA

Frolic through extensive sunflower fields and capture a naturally Instagrammable moment in Poolesville.

Crossvines
THE CROSSVINES

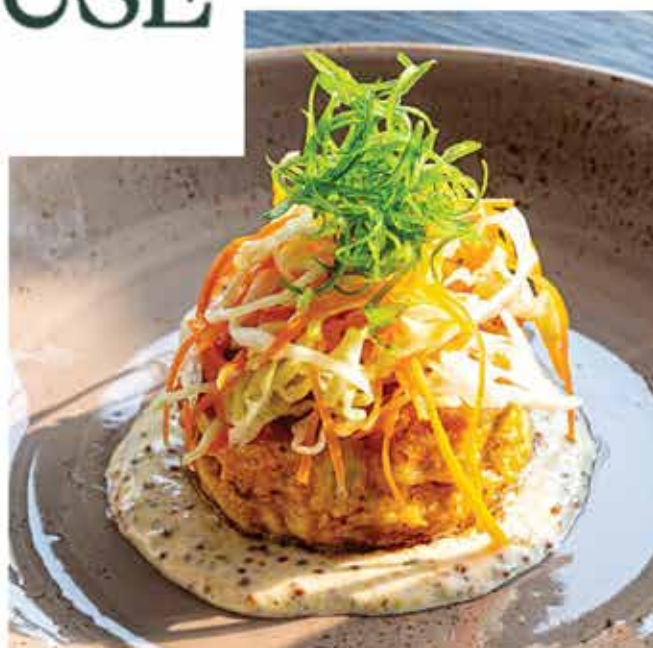
Events Venue & Dining Destination

Enjoy seasonal farm-fresh ingredients
& local favorites at the Farmhouse Bistro.
Book your event with us!

16601 W Willard Rd. Poolesville, MD 20837
www.crossvines.com



The Crossvines
**FARMHOUSE
BISTRO**



WHAT'S HAPPENING

Discover more events and activities throughout the year by visiting events.visitmontgomery.com

JANUARY

New Years Eve Celebrations
Countywide

National Skating Month
Cabin John & Wheaton Ice Rinks

FEBRUARY

Black History Month
Josiah Henson Park & Woodlawn Museum
Countywide

FeBREWary in Maryland
Countywide

Lunar New Year Celebration
Rockville and Countywide

Maple Sugaring Days
Brookside Gardens

Screen Valentines: Great Movie Romances
AFI Silver Theatre and Cultural Center

Savor Bethesda Restaurant Week
Bethesda

Valentine's Day Red Dress Ball: Swing Dance
Glen Echo Park

MARCH

Kites Over Clarksburg
Ovid Hazen Wells Park

Local Writers Showcase
Bethesda

Maryland Wine Month
Countywide

National Cherry Blossom Festival
Countywide

St. Patrick's Day Parade & Celebrations
Countywide

APRIL

Color & Kite Festival
Black Hill Regional Park

Countryside Artisans Studio Tour
Agricultural Reserve

Greenfest
Brookside Gardens

National Cherry Blossom Festival
Kenwood

National Park Week
C&O Canal National Historical Park

Wings of Fancy: Live Butterfly & Caterpillar Exhibit (April–September)
Brookside Gardens

MAY

Bethesda Fine Arts Festival
Bethesda's Woodmont Triangle

Canal Community Days
Great Falls Tavern Visitor Center

Discover MoCo Month
Countywide

Gaithersburg Book Festival
Gaithersburg City Hall

Hometown Holidays/Memorial Day Parade
Downtown Rockville

MoCo Eats Week
Countywide

Poolesville SpringFest
Whalen Commons

Rockville Arts Festival
Rockville Town Center

JUNE

AFI Docs Film Festival
AFI Silver Theatre and Cultural Center

Heritage Days
Countywide

Juneteenth Celebrations
Countywide

Pride Events
Countywide

Strawberry Festival
Sandy Spring Museum

Washington Folk Festival
Glen Echo Park

World Heritage Festival
Silver Spring

JULY

Farm Tour and Harvest Sale
Countywide

Independence Day Parade & Fireworks
Countywide

National Recreation & Parks Month
Countywide

Summer Concert Series
Blackrock Center for the Arts

Washington DC South Asian Film Festival
Silver Spring

AUGUST

Fiesta Asia Silver Spring
Silver Spring Civic Center

Ukefest
The Music Center at Strathmore

Maryland Tax Free Week
Countywide

Montgomery County Agricultural Fair
Gaithersburg

SEPTEMBER

AFI Latin American Film Festival
AFI Silver Theatre and Cultural Center

International Underground Railroad Month
Countywide

Labor Day Parades
Gaithersburg and Kensington

Maryland Restaurant Week
Countywide

Poolesville Day Festival
Whalen Commons

Silver Spring Jazz Festival
Silver Spring

OCTOBER

Antique and Classic Car Show
Rockville Civic Center Park

Countryside Artisans Studio Tour
Agricultural Reserve

Field of Screams
Olney

Oktoberfest
Countywide

Silver Spring Zombie Walk
Silver Spring

Takoma Park Street Festival
Main Street Takoma Park

Taste of Bethesda
Woodmont Triangle

NOVEMBER

Maryland Emancipation Day Celebrations
Countywide

Montgomery County Thanksgiving Parade
Silver Spring

Washington, D.C. South Asian Film Festival
Wheaton

DECEMBER

Countryside Artisans Studio Tour
Agricultural Reserve

Washington, D.C. Temple Festival of Lights
Kensington

Garden of Lights
Brookside Gardens

Holiday Tree Lightings
Countywide

Winter City Lights
Olney

Winter Lights Festival
Seneca Creek State Park



JANUARY- FEBRUARY

As over 15% of Montgomery County residents are Asian American, Lunar New Year is an important part of our community. The **City of Rockville's Lunar New Year Celebration** features cultural performances, interactive displays, activities for kids, and to-go bento boxes. There's also an annual **Lunar New Year Celebration at Westfield Montgomery**. Head over to the Gaithersburg Community Museum for drop-in activities, or partake in the old-fashioned art of verbal storytelling at **Quince Orchard Library's Story Swap**. The family-focused celebration at Chevy Chase Library has bilingual English and Chinese stories, Chinese dancing, and crafts.

APRIL

Washington, D.C.'s famous **cherry blossoms** are the region's first sign of spring. Venture beyond The Tidal Basin and take a cherry blossom tour of Montgomery County in full bloom. The **Kenwood** neighborhood between **Bethesda** and **Chevy Chase** has more than 1,200 cherry trees and is a less crowded alternative to downtown D.C. Appreciate **Takoma Park's** cherry trees while you wander the historic town, or enjoy a picnic under a Yoshino cherry tree with a view of **Glenview Mansion** at the **Civic Center Park** in Rockville, or get a pondside blossom view at **Brookside Gardens**, and **The Manor at Silo Falls** features an extensive collection of cherry blossom trees lining their driveway.

MAY

During Discover MoCo month, experience four weeks of all things Montgomery County. These include **Shop MoCo Week**, **MoCo Hotel Week**, **MoCo Eats Week**, and **Kick Off to Summer**. May is also **National Travel & Tourism Week**, **National Bike Month**, and **Asian American & Pacific Islander Heritage Month**.

JUNE

Montgomery County is a great place for you and your family to celebrate **Pride Month!** Many local establishments and groups—including **Bark Social**, **Whiteoak Community Recreation Center**, **Arts Barn**, and **Aspen Hill Library**—host events supporting the LGBTQ+ community. The City of Rockville holds an annual **Pride Celebration** at Rockville Town Square Park, and Takoma Park presents its fun-filled **Takoma Pride Day**. Full of performances by local artists, pop-ups from local businesses and free HIV testing, **Pride in the Plaza** at Veteran's Plaza in Silver Spring is another large celebration. The fun continues with **Pride Family Day** at Glen Echo Park, and **MoCo Pride Youth**—the public school district's LGBTQ+ student affinity group, hosts a picnic for all youth and allies, no matter what school you attend.

SEPTEMBER- OCTOBER

We're all German during Oktoberfest, and Montgomery County is full of festive events. Check out **Silver Branch Brewing Co.** in Silver Spring or join in the fun at **PIKEtoberfest** at Pike + Rose in North Bethesda. Rockville entertains with **Rocktoberfest** at Rockville Town Center and celebrations at **7 Locks Brewing**. The City of Gaithersburg hosts its gathering at **Bohrer Park at Summit Hall Farm**. And UpCounty goes all in on their harvest heritage with revelries including **Needwood Golf Course's beer garden**, **Montgomery Parks' ale trail** at **Rock Creek Regional Park**, and a party at **The Comus Inn**.

NOVEMBER- DECEMBER

Montgomery County is a flurry of activity during the holiday season! From the **Thanksgiving Parade** in Silver Spring to the four major holiday lights displays, there are tons of things to do and see. Not to mention all the shopping events, restaurant celebrations, and other experiences the winter brings!

FREE THINGS TO DO ALONG THE RED LINE

You don't have to spend a dime to have a good time in Montgomery County.

○ SHADY GROVE STATION

As the last stop on the western side of the county, this station serves as a hub to connect you to Montgomery County's rural areas via the Ride On bus system. Walk a couple of minutes down Redland Road to Crabbs Branch Stream Valley Park, an undeveloped nature reserve that provides opportunities for quiet enjoyment of the natural environment. Take a short Uber or Lyft ride to rio in Gaithersburg. Stroll the boardwalk and enjoy free concerts with views of the lake.

○ ROCKVILLE STATION

Rockville Town Center is steps from the Metro and has tons to see. Besides the shops and restaurants, the photogenic Rockville B&O Railroad Station was built in 1873 and has been lovingly preserved. The historic Red Brick Courthouse is nearby, situated in a grassy park and features a museum. A short ride will lead you to Rockville Civic Center Park, which is filled with things to see and do among the walking trails. Croydon Creek Nature Center has nature

exhibits, a small library and a watershed diorama of the Rockville area. Built before, during, and after the Civil War, Glenview Mansion hosts events year-round. Venture to Red Gate Park for a nature walk. There's also an epic sledding hill for snowy days!

○ TWINBROOK STATION

Enjoy an easy 10-minute walk for shopping and dining at Congressional Plaza. Take a stroll along the Bethesda Trolley Trail.

○ NORTH BETHESDA STATION

Take a leisurely 10-minute stroll up Rockville Pike to Pike & Rose. This eclectic shopping center features a wide variety of boutiques and retail stores where you can window shop as well as free concerts in warm weather. The Pike District Pop-Up Park is a perfect place for a relaxing yoga session or salsa lessons, hosted all summer long.

○ GROSVENOR-STRATHMORE STATION

Summertime is the best time to visit The Music Center and

Mansion at Strathmore for free! Enjoy free concerts at the venue's Gudelsky Gazebo, including a series just for kids. Strathmore also features an outdoor Sculpture Garden that all ages will appreciate exploring. A 5-minute Uber ride from the Metro will take you to the Ratner Museum, a private gallery filled with sculptures and art with a concentration on Jewish culture.

○ MEDICAL CENTER STATION

This station exists solely to serve the massive campus of the National Institutes of Health (NIH), which is the nation's medical research agency. Bring your bike, or rent one from a Capital Bikeshare kiosk, and take a ride into Bethesda along the Bethesda Trolley Trail.

○ BETHESDA STATION

You don't have to go far to reach new heights at Bethesda Station, which features the second longest escalator in the Western Hemisphere. At 212 feet long, this ride will rival some theme parks. Steps from the Metro is the Waverly

Street Gallery, where you can window shop contemporary art works by a collective group of artists. If you're a young fan of the arts, Round House Theatre's Free Play program is for you! The program allows all students ages 13 through college to attend for free with a valid school ID. Take a stroll and window shop at Bethesda Row or take a self-guided tour on the Bethesda Circulator. Looking for a more nature-centric experience? Take a 10-minute Uber ride to the Audubon Naturalist Society Woodend Sanctuary in Chevy Chase. Experience this private retreat with hiking trails full of wildlife and of course, birds. Indoor displays educate visitors on the Society's bird-related work.



GLENMONT

WHEATON

FOREST GLEN

SILVER SPRING

TAKOMA



wmata.com

Information: 202-637-7000

TTY: 202-962-2033



○ **FOREST GLEN STATION**

If you're in the mood for a walk, it's 20 minutes to the National Museum of Health and Medicine. Plan to spend 1-2 hours exploring this fascinating venue, which was established during the Civil War as the Army Medical Museum. Shop for antiques and vintage items at Kensington Antique Row. If a walk is a no-go, hail an Uber from the Metro station for a 5-minute ride to the Washington D.C. Temple & Visitors Center to explore the exhibits and enjoy family-friendly events.

○ **SILVER SPRING STATION**

Steps away from the Metro is a one-room exhibit presented by the National Oceanic and Atmospheric Administration (NOAA). The Gateway to NOAA is a great place to learn about the earth and its atmosphere. Farther along, Downtown Silver Spring is a vibrant shopping area with a fountain that kids of all ages will enjoy playing in. On the far side of the mall, check out Veterans Plaza—host to a full schedule of activities and festivals that celebrate the diverse cultures of the county's residents. In the winter, people-watch as ice skaters spin and glide on the outdoor rink.

○ **FRIENDSHIP HEIGHTS STATION**

A 5-minute walk up Western Avenue leads you to Western Grove Urban Park, a protected 2 acres, featuring a natural landscape. Use the human sundial, watch the ornamental water feature, or climb the natural play space.

○ **GLENMONT STATION**

For a don't-miss experience, walk 20 minutes to the remarkable Brookside Gardens. Meander under the wisteria walkway, take in the rose garden, turtle-watch along a lake with a Japanese-style pavilion, or puzzle through the labyrinth. The Brookside Nature

Center has exhibits and displays on animals that are native to the area.

○ **WHEATON STATION**

Westfield Mall, adjacent to the Metro, is a fantastic indoor venue on a blisteringly hot or rainy day. Or take a 10-minute Uber ride to Wheaton Regional Park. It's a great place for a picnic and features seasonal activities like baseball, ice skating, and even a mini train for little explorers.

○ **TAKOMA STATION**

On a clear Sunday, walk 5 minutes up Carroll Avenue to the Takoma Park Farmer's Market. Explore the vendors selling beautiful flowers, fruits, vegetables, bread, honey, cheeses, even locally-made whiskey. This community staple runs year-round. Take a stroll and meet with local merchants along Takoma Park's Main Street.



UNEARTH MoCo's RURAL SIDE

► THE CROSSVINES

Ever heard of “agritourism?” The idea of inviting visitors to explore rural spots isn’t new, but it is evolving.

Elegant restaurants serve gourmet food and glamorous drinks among stunning vistas that feel a world away from the city life. Historic venues charm guests with farm-to-table menus proudly supporting local growers and artisans. Tourists travel far and wide to create memorable experiences in picturesque locations.

Montgomery County is home to a surprising number of rural areas. In 1980, the Montgomery County Council created an Agricultural Reserve, or what the locals call the “Ag Reserve.” Heralded as one of the best examples of land conservation policies in the United States, the Agricultural Reserve encompasses 93,000 acres—almost a third of the county’s land resources. With 540 farms and 350 horticultural enterprises, agriculture contributes over \$287 million to the county’s economy annually.

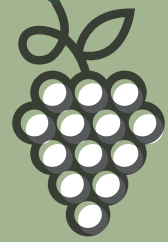
SEE + DO

Top of visitors’ “must see” lists is the sunflower fields at **McKee-Beshers Wildlife Management Area** in Poolesville. Sunflowers are planted by hand each year to attract game birds, and peak blooms typically occur in July. The scenic 455-acre **Agricultural History Farm Park** in Derwood features rolling hills, open fields, an apple orchard, and a variety of farm animals. Get a unique perspective on the county’s rich farming heritage while visiting barns, historic buildings, a modern farming activity center, and other facilities at the park. The **King Barn Dairy MOOseum** is dedicated to interpreting the rich history of the farms,

families, and related organizations of Montgomery County. Their stories are told through a permanent collection featuring interactive exhibits and educational programs. For spectacular countryside views, hike to the summit of **Sugarloaf Mountain**. There you can look out over the county’s pastoral patchwork of farms and villages—a scene largely unchanged since the 19th century.

EAT + DRINK

Enjoy a sumptuous meal outdoors in Brookeville at **The Manor at Silo Falls**, a rustic-yet-chic former dairy farm that serves fresh seasonal menus and handcrafted cocktails. **The Comus Inn** boasts unequalled panoramic views, sweeping landscapes,



YOUR WEEKEND COMES ALIVE AT THE CROSSVINES

Montgomery County's newest rural venture is adding an educational twist to the agritourism offerings. Named after a climbing vine native to Maryland, **The Crossvines** is an accessible escape that offers a closer-than-you-think destination. The venture impressively intertwines Maryland's rich farming history, the local winemaking industry, and investment in the local economy—all in a tranquil, nostalgic retreat.

Escape to the Reserve

Get away to a tranquil escape for weekenders and day-trippers alike that features stunning grounds and gardens to explore. Plus, **The Golf Course at The Crossvines** entices visitors with almost 7,000 yards of championship golf and waterfront views across two scenic lakes.

Eat, Drink, and Be Merry

Appreciate Maryland's classic hospitality in a picturesque destination. The Crossvines is home to a **chic artisanal bistro** that acts as a catalyst for connecting visitors to local farmers and producers. Guests can also enjoy a sunny afternoon picnic at the winery and enjoy samplings of local blends.

Learn About Winemaking

The Crossvines is an educational gateway that offers space, equipment, and services for students and local growers to **learn about the winemaking process** and produce their own wines. Coordinated by the University of Maryland Extension, rolling acres of demonstration vineyards help teach vineyard management skills while providing quality grapes to support the industry. A custom crush facility processes grapes from the region's growers, both large and still developing.

Gather Together

Toast to new beginnings, celebrate milestones, and build community at The Crossvines. The property offers **stunning, thoughtfully designed venue options** for private events, weddings, and corporate gatherings, including a spectacular outdoor wedding venue and a 250-seat banquet hall. The distinctive celebration of your dreams awaits!



and historic charm on 5.26 stunning acres at the base of Sugarloaf Mountain. Enjoy local brews and live music in the beer garden.

SHOP + FIND

Visit **Butler's Orchard** and other farms in the spring for pick-your-own strawberries, blueberries, and blackberries. In the fall, families head out to the local pumpkin patches and during the holidays, they cut fresh trees. Or relax at **Locals Farm Market**, where breakfast, lunch, bakery goods, and fresh produce are accompanied by handcrafted coffees and displays by local artists in a comfortable, community-focused setting.





► GLENSTONE MUSEUM

EXPERIENCE THE ARTS

Whether you're gazing at modern and contemporary art or creating your own masterpiece, there are a number of ways to satisfy your arts and culture cravings in Montgomery County.

APPRECIATE THE ART

Glenstone Museum is a free modern and contemporary art museum that seamlessly integrates art, architecture, and nature in a serene and contemplative environment on nearly 300 acres. Visitors must be 12 or older to attend and visits can be scheduled online.

At **Sandy Spring Museum** it's all about the community. There, people can develop meaningful connections by exploring community history through the visual, literary, and performing arts. In recent years, the museum has

evolved from a traditional history museum into a dynamic, participatory cultural arts community center.

Members of the **Countryside Artisans of Maryland** jointly open their galleries and studios located in historic, rural Montgomery, Howard, and Frederick Counties for two art tours each year in April and December. Spend a day in the country, enjoy scenic drives between studios, and meet artists. Come home with a renewed sense of well-being and a wonderful piece of local, original art!

CREATE YOUR OWN

Once an amusement park, **Glen Echo Park** is a historical site that is now home to many arts and cultural organizations and programs. There are 13 resident artists and arts organizations, a thriving social dance program, numerous art studios and galleries, and hundreds of classes in visual and performing arts. Children especially love the nature program, two award-winning children's theaters, the weekend drop-in art program, and riding the restored 1921 Dentzel Carousel.

The **KID Museum**, in Bethesda, is an innovative learning space unlike any other in the Washington, D.C. metro region. The museum provides impactful hands-on learning that incorporates



► GLEN ECHO PARK

STEM, art, and culture with 21st Century skills like creativity and critical thinking.

Founded in 1987 as a grassroots organization serving local artists, **VisArts** is located in the heart of downtown Rockville. They provide children, teens, and adults with opportunities to express their ideas and develop their talents through art classes, exhibits, and innovative programs.

CELEBRATING **45** YEARS



JANUARY 12 - MARCH 10, 2024



MARCH 15 - JUNE 16, 2024



JUNE 21 - SEPTEMBER 1, 2024



SEPTEMBER 6 - NOVEMBER 10, 2024



NOVEMBER 15 - JANUARY 12, 2025



COLUMBIA, MARYLAND

410-730-8311

TOBYSDINNERTHEATRE.COM

Convenient to BALTIMORE & WASHINGTON, DC



EXPLORE
**BETHESDA
& BEYOND**
RENTAL ~ TOURS

BOOK NOW >>



Explore the city in eco-friendly style with
our eBike rentals and guided tours –
electrify your adventure today!

240.800.3154

WWW.PEDEGOBETHESDA.COM

ROUND HOUSE THEATRE
**A THEATRE
FOR EVERYONE**

**ROUND
THEATRE
HOUSE**

Located in Downtown Bethesda

RoundHouseTheatre.org

240.644.1100

 **Hilton
Garden Inn**



High value, quality hotel rooms for
business and leisure travelers on the go.

- Welcoming Lobby and Lounge
- Complimentary Wi-Fi Internet & Parking
- Heated Indoor Pool & Whirlpool
- Precor Fitness Center
- Kid's Entertainment Room
- Full Service Restaurant, Bar,
and Outdoor Terrace
- 2,800 Sq Ft of Conference Space



RockvilleGaithersburg.HGI.com

14975 Shady Grove Road | Rockville, Maryland, 20850 | 240-507-1800



PERFORMANCES + ENTERTAINMENT

While many view the Washington, D.C. metro region as the center of world politics, it is also a cultural hub for musicians and performers. Montgomery County offers an exceptional range of world-class performance and entertainment venues for all ages.

MUSIC + ENTERTAINMENT

High-quality arts programming, served with the hospitality and warmth of a family enterprise, are the hallmarks of **The Music Center and Mansion at Strathmore**. The 1,976-seat theater regularly hosts favorites like the National Philharmonic Orchestra and the Baltimore Symphony Orchestra. **The Mansion at Strathmore** hosts smaller performances and private collections. Walk the elaborate Sculpture Gardens, enjoy tea in the **Strathmore Tea Room**, or catch a music festival on the front lawn. Also powered

by Strathmore, **AMP** is your place to come together for great music at **Pike & Rose**, an urban-minded, Metro-accessible neighborhood in North Bethesda. Experience authentic live music and comedy experiences in a vibrant, growing neighborhood full of new energy.

The Fillmore Silver Spring brings a dynamic, first-class music and entertainment venue to downtown Silver Spring. With a capacity of 2,000, The Fillmore features an array of diverse live music programming. In Gaithersburg, **Boardwalk Stage** is



located along rio's lakefront and features Friday night concerts in the summer.

The **American Film Institute (AFI) Silver Theatre and Cultural Center in Silver Spring** is anchored in the restored 1938 Silver Theatre, creating a classic feel to the films and movies shown within its walls. AFI examines

the significance of films, while showing filmmaker interviews, discussions, and other events, making the films a true centerpiece.

THEATER PERFORMANCES

Recalling the charm of a bygone era, the **Arts Barn** is a beautifully renovated stable that once housed



► AFI SILVER THEATRE AND CULTURAL CENTER

horses on the former Tschiffely Estate. Today, the Arts Barn is part of **Arts on the Green**, the City of Gaithersburg's home for visual and performing arts, including a 99-seat theater. In nearby Germantown, the **BlackRock Center for the Arts** presents performances featuring top regional, national, and international touring talent.

Olney Theatre Center offers a diverse array of professional productions year-round that enrich, nurture, and challenge a broad range of artists, audiences, and students. One of two state theaters of Maryland, the center is situated on 14 acres in the heart of the beautiful Washington-Baltimore-Fredrick "triangle," within easy access of all three cities.

Round House Theatre is a home for outstanding ensemble acting and lifelong learning. Known for its adventurous programming and deep investment in local talent, Round House has become a premiere destination for the serious theater enthusiast in the Washington, DC region. Located in Bethesda, **Imagination Stage** offers year-round professional theater shows as well as classes and camps for toddlers, children, and young adults.

The F. Scott Fitzgerald Theatre is a vibrant, local theatre in Rockville at Civic Center Park. Dedicated to the performing arts, this 446-seat theatre boasts over 100

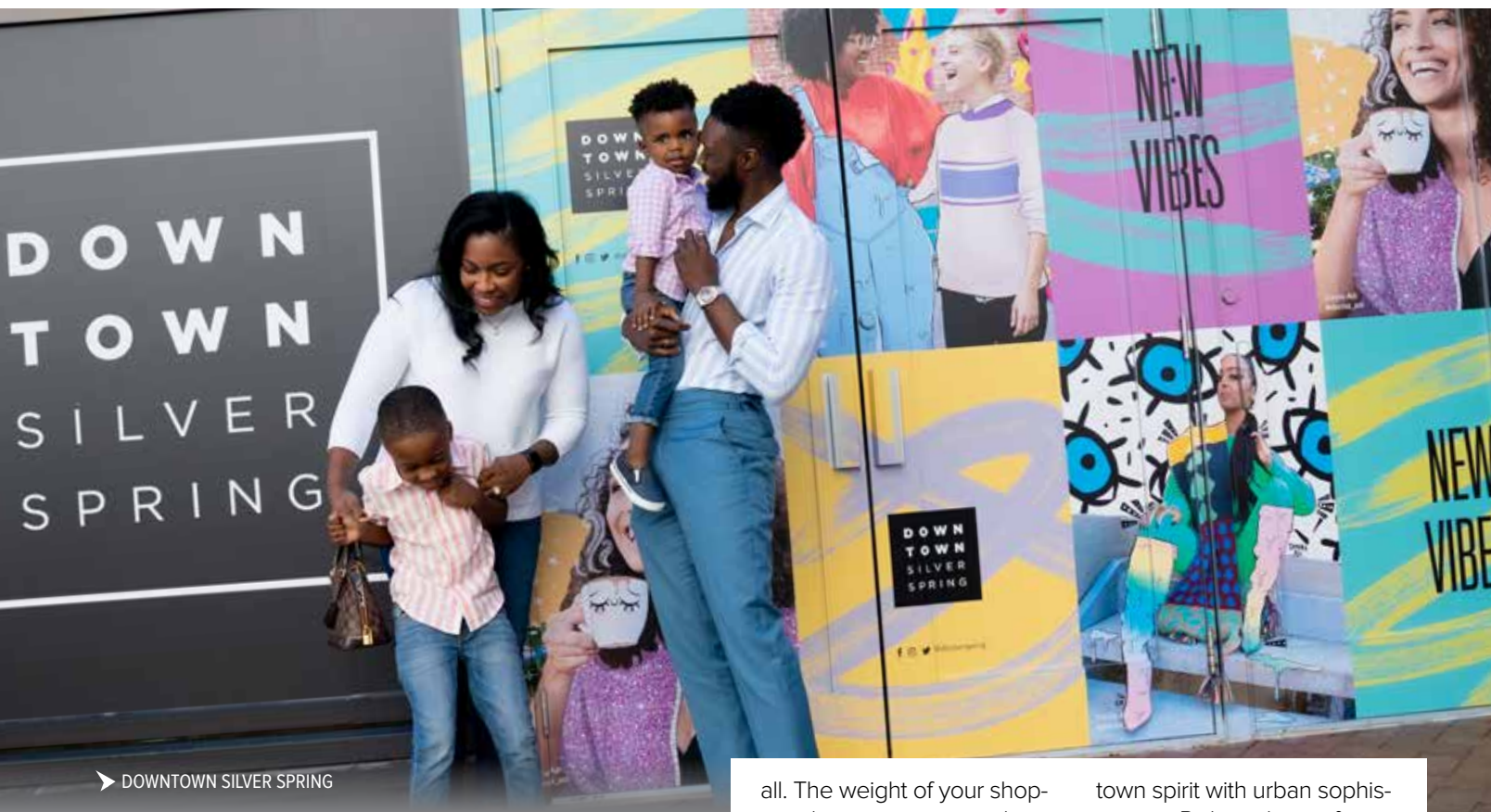


► ROUND HOUSE THEATRE

shows a year. Experience a captivating musical by the **Rockville Musical Theatre**, become moved by the Victorian Lyric Opera Company, or lose yourself in the spellbinding **Rockville Civic Ballet**.

MARYLAND ARTS + ENTERTAINMENT DISTRICTS

Maryland is one of the first states in the country to develop Arts and Entertainment Districts on a statewide basis. These districts help develop and promote community involvement, tourism, and business revitalization through tax-related incentives that attract artists, arts organizations, and other creative enterprises. Montgomery County is home to three (out of 26) Arts and Entertainment Districts: Wheaton, Silver Spring, and Bethesda. Each district offers a wide range of arts and humanities organizations, popular arts venues, festivals, entertainment businesses and more.



➤ DOWNTOWN SILVER SPRING

SHOPPER'S PARADISE

From handmade jewelry to designer shoes, antique statement pieces to stylish handbags, Montgomery County has been dubbed a “shopper’s paradise” by local and metropolitan residents alike. Whether you’re a trendsetting fashionista or a sartorial bargain hunter, we have a variety of shopping destinations that suit any style and budget. There are numerous downtown centers, malls, and outlets filled with delicious bites, superb shopping, community events, and fun for the whole family. Most of these are also Metro-accessible!

Making up 12.5-acres in the heart of the city, **Rockville Town Center** is a vibrant combination of public services, retail, and dining. Grab brunch at the restaurant **First Watch**, enjoy a pint or two at **Finnegan’s Wake**, or indulge

in Sichuan specialties at **Peter Chang**.

Get to know **Bethesda Row** this season and shop indie boutiques. Well-known brands **Sassanova**, **Lululemon Athletic**, and **Blue Mercury** are in the heart of it

all. The weight of your shopping bags is sure to work up an appetite worthy of a break at nearby **Mon Ami Gabi** or an indulgence at **Georgetown Cupcakes**.

Step into another world with the crème de la crème of stores at **The Collection at Chevy Chase**. This area is home to the only **Tiffany’s** and **Saks Fifth Avenue** in Maryland!

Designated as one of 23 “Main Streets” by the State of Maryland, **Main Street Takoma Park** offers a small-

town spirit with urban sophistication. Pick-up the perfect candle at **Tabletop** or a beautiful stained-glass lantern at **The Covered Market**. And you can even learn about Roscoe—Takoma’s neighborhood mascot.

If you’re looking for a festive big city vibe, make sure to check out **Downtown Silver Spring**. Home to familiar retail shops including **H&M**, **LOFT by Ann Taylor**, and **DSW**, you’ll find this season’s hottest trends at affordable prices. At night, **Ellsworth**



➤ CLARKSBURG PREMIUM OUTLETS

Place comes alive with lights so bright you will feel like you're in Times Square.

Westfield Wheaton Mall brings shoppers the best retail destinations in major cities by integrating food, fashion, leisure and entertainment.

Besides delicious food, **iPic Movie Theater**, and fun bowling at **Pinstripes**, the **Pike & Rose** neighborhood is also a shopper's delight. Discover your next best-fitting pair of jeans at **Lucky Brand**. Get built-to-last outdoor gear at **REI** or **L.L. Bean**. Find top-of-the-line cookware at **Sur La Table** and home décor at **West Elm**.

In Gaithersburg, **rio Lakefront** is a carefully planned mix of retail, restaurants, and experiences. Once you've shopped to your heart's content at shops like **White House Black Market** and

Locally Crafted, you can enjoy a movie at the **AMC Dine-In Theater** or go paddleboating on the lake. There's even a carousel for the kids!

The town of Kensington is full of art galleries, music venues, enticing restaurants, and eclectic gift shops. If you're looking for unique treasures from times past, head to **Kensington Antique Row**. Located on Howard Avenue, the building hosts vendors and booths selling everything from glassware and books to furniture and clothing.

The ultimate bargain hunters will enjoy visiting **Clarksburg Premium Outlets**. The 96 outlet stores range from fast fashion to luxury brands. No matter your age or style, you'll find the right fit in Clarksburg.

ENTREPRENEURIAL SPIRIT

Montgomery County's inherent entrepreneurial spirit offers a wide range of local shops featuring eclectic treasures and unique finds. Here are a few creative favorites to include on your weekend getaway itinerary.

Artisans Gallery

12147 Darnestown Road
Gaithersburg

The Blue House

7833 Woodmont Avenue
Bethesda

The Cottage Monet

36 Maryland Avenue
Rockville

The Family Room

6820 Olney Road
Lytonsville

Joyful Bath

5534 Wilkins Court
North Bethesda

Red Orchard

10259 Old Georgetown Road
Bethesda

Shafa Blends

1327 Rockville Pike
Rockville

SW7

3750 Howard Avenue
Kensington

Tabletop

6927 Laurel Avenue
Takoma Park



RELAXING SPACES
SOPHISTICATED BITES
GLOWING SERVICE

Be Socially Ahead and Book Your Group Today!

Spacious guestrooms with King Bed and 2 Queen Beds

- Guest Room Rates to include Breakfast and Parking
- Book a group of 20 or more and receive:
 - ◆ \$75 Visa/Mastercard Gift Card
 - ◆ Complimentary Night to be used toward Guestroom or Hospitality Room



WWW.BETHESDA.HGI.COM

or email your Group Sales Consultant at
wasbt-salesadm@hilton.com

7301 Waverly Street • 301-654-8111

*RESTRICTIONS: (SELECTED WEEKENDS DON'T APPLY - PLEASE CALL FOR MORE INFORMATION).

BETHESDA ROW

NEIGHBORHOOD ROOTS.
GLOBAL SENSIBILITIES.

THE
SALT LINE
OYSTER + ALE

Levain
BAKERY

MEJURI

VUORI

AND MORE...



BethesdaRow.com





► JOSIAH HENSON MUSEUM AND PARK



PRESERVING HISTORY

Montgomery County, founded in 1776, has prioritized preserving and sharing its history and those of its communities. History buffs will delight in seeing the past come to life at these publicly accessible historical attractions in the county.

HISTORICAL PARKS

Experience 1800s Maryland at **Woodlawn Manor Cultural Park** in Sandy Spring. Interactive exhibits tell the story of the earliest residents of the community. While there, walk the **Underground Railroad Experience Trail** and imagine what it was like to be a freedom seeker. The nearby **Sandy Spring Museum**—a Regional Folklife Center—connects diverse communities through experiences of the region's cultural heritage.

In Derwood, see the past, present, and future of local farming at the **Agricultural History Farm Park** including the **Magruder-Bussard Farmstead**.

LOCAL + NATIONAL MUSEUMS

The **Gaithersburg Community Museum**, located in the B&O Rail complex, features hands-on learning centers for children and exhibits that explore the area's rich history.

The 1815 **Beall-Dawson House** has retained most of its original architecture and serves as a museum of 19th Century life.

At the **National Capital Trolley Museum** in Colesville, explore exhibits and even ride an antique streetcar through **Northwest Branch Park**!

Home of the bullet that killed Abraham Lincoln, the **National Museum of Health and Medicine** in Silver Spring

focuses on the history of military medicine and displays thousands of artifacts dating back to the Civil War.

Montgomery County's most recent heritage museum

is the **Josiah Henson Museum and Park**. Opened in spring 2021, this experience not only provides visitors background on Rev. Henson's life but also shows what that time period was like in Maryland. The museum's mission includes bringing to light the ongoing struggles of racial equality in America.



► NATIONAL CAPITAL TROLLEY MUSEUM

STRATHMORE

*Experience the arts
up close and personal*



Jim Morris

STRATHMORE.ORG | 301.581.5100

5301 Tuckerman Lane, North Bethesda, MD 20852 | **M** On the Red Line

Music Above All



Jay Faras by Jason Hornick



Upgrade your night out at AMP, an intimate, acoustically awesome venue for live music, comedy, and cocktails.

AMPbySTRATHMORE.COM | 301.581.5100

Pike & Rose | North Bethesda, MD | **M** On the Red Line

THE PERFECT WEEKEND GETAWAY FOR HISTORY LOVERS

If you're a history lover, get ready to pack your bags because we have the perfect weekend itinerary for you! From having lunch at a tollhouse to strolling through a once-beloved theme park, there are so many different and exciting ways to experience all of the wonderful historical sites Montgomery County, Maryland has to offer.



► LOCKHOUSE 21 "SWAINS"



► GREAT FALLS TAVERN VISITOR CENTER



► THE COMUS INN

DAY 1

Live like a lockkeeper in the early twentieth century at the **Swains Lockhouse**. Located right on the Potomac River, the lockhouse has everything you need for a memorable weekend including furnished early-1900s style rooms and vibrant views from the windows.

After you've settled in, wander around **Great Falls Tavern Visitor Center** and learn about what once was a gathering place for American Indians. While you're there, take a tour led by a Park Ranger or explore solo via a phone tour. Afterward, get lost in all that **C&O Canal National Historical Park** has to offer, like the roaring **Great Falls**, scenic views from the **Billy Goat Trail**, or kayaking down the river.

The Old Angler's Inn more than a century old restaurant, is a

Maryland favorite. Enjoy fine dining or casual fare in the garden.

Start winding down by strolling through **Glen Echo Park**, a former amusement park that operated from the early 1900s to the 1960s. Ride on the iconic Dentzel Carousel, which was originally installed at the park in 1921 and continues to be a national treasure.

DAY 2

Start your second day at the **National Capital Trolley Museum**, where you'll learn the history of trolleys, streetcars, trains, and more. Next, head to the **Thomas Harper Cabin**, a log cabin built in 1870 in Jonesville, a community formed by freed slaves. The Harper family of 10 lived in the cabin, which had a hen house, smokehouse, hog pen, fruit trees, and vegetable garden in the backyard.

Relax and unwind by having a meal at **Zinnia** in Silver Spring. What once was once a place where travelers would stop and pay a fee before entering a privately-owned road is now the last tollhouse in the county. You'll come for the rich history, beautiful antiques, and cozy atmosphere, but you'll stay for the delicious homecooked meal.

After your lunch, step back in time and learn about the African Diaspora, civil rights, and more at the **Sandy Spring Slave Museum & African Art Gallery**. Then experience history firsthand at **Woodlawn Manor Cultural Park's Underground Railroad Experience Night Hike**. The guided hike follows a path that freedom seekers might have taken to the North.

DAY 3

Have some lunch at **The Comus Inn**, a historical building complex located at Sugarloaf Mountain. Enjoy made-to-order dishes and special wine selections to enhance your dining experience. This quaint and romantic restaurant will have you coming back for more.

End the day by walking across **The Monocacy Aqueduct**, the longest aqueduct on the C&O Canal National Historical Park. The Monocacy Aqueduct was frequently attacked during the American Civil War because war materials and troops were often transported there. Despite the attacks from the Confederate soldiers, The Monocacy Aqueduct was never destroyed and now stands as an "icon of American civil engineering" preserved by the C&O Canal Trust.



EXPLORE MONTGOMERY COUNTY, MARYLAND

LIKE NEVER
BEFORE



VISIT
MONTGOMERY
MARYLAND'S CULTURAL CAPITAL™



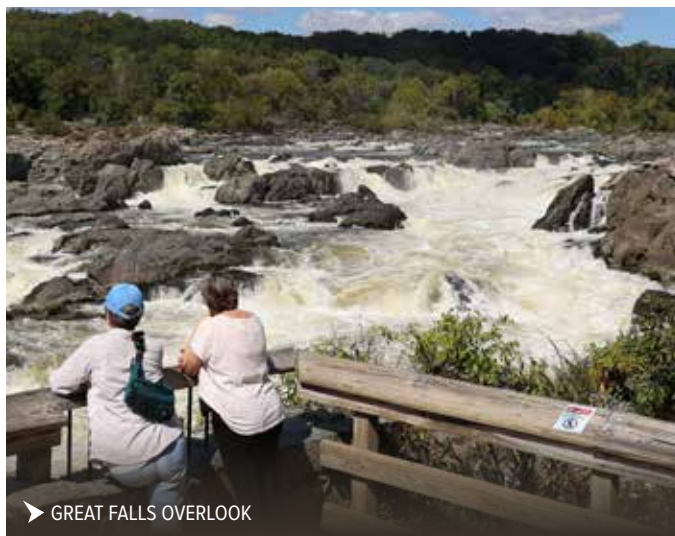
Find even more seasonal itineraries, places to eat
and upcoming events at [VisitMontgomery.com](https://www.VisitMontgomery.com)

THE C&O CANAL EXPERIENCE

For nearly 100 years, the Chesapeake & Ohio Canal was a main transportation route and lifeline for communities along the Potomac River. Today, it endures as an incredible natural attraction filled with historical and recreational treasures for all ages.

► CYCLING ON THE C&O CANAL TOWPATH





► GREAT FALLS OVERLOOK

Located at the junction of nature and history, the 184.5-mile **C&O Canal National Historical Park** is the 8th most visited National Park in the United States. The **Great Falls Tavern Visitors Center** was an inn for people traveling along the canal where patrons could enjoy a home-cooked meal, dancing in the ballroom, and the fine hospitality of Lockkeeper Fenlon. Now, you can get a free ticket for a ride aboard the replica **Charles F. Mercer canal excursion boat**. Learn about the people who lived and worked along the canal

as park staff operate the canal locks and boat just as they would have in the 1870's.

The **Great Falls Overlook** is a must-see when visiting the park! There are three overlooks available to view the waterfalls and the Potomac River. The **Billy Goat Trail** is some of the best hiking Montgomery County has to offer, with three sections that are set for different skill levels. Located near the Visitors Center, the **Old Anglers Inn** is a popular restaurant featuring seasonal fare and a terrace beer garden.

The Canal Towpath is a

flat trail stretching the entire length of the park that hikers and cyclists traverse daily. (The towpath intersects with the **Capital Crescent Trail** leading to Bethesda.) Along the way, you can visit many other sites. Heading South from the Visitors Center, **Mary's Wall** between Locks 17 and 16 is over 50 feet tall and one of the tallest dry laid walls still in existence. From the top of it, views of the Potomac Gorge are stunning.

Glen Echo Park is located across from Lock 7 on the canal and is a fascinating place to explore. (Read more on page 44.) Nearby, **The Irish Inn** serves up a traditional Irish pub experience. Next to Glen Echo, the **Clara Barton National Historic Site** tells the story of the nurse and Red Cross founder's life and mission. Near Lock 6, take a break and watch people navigate through the rapids and rocks at the **Canoe & Kayak Slalom Course**. (Interested in kayaking yourself? Check out **Calleva's** "Kayak the Monuments" excursion!)

Heading North from the Visitors Center, the scenery is spectacular. If you're interested in sleeping under the stars, there are **hiker/biker campsites** all along the towpath. At Lock 24, venture off the towpath to (carefully!) explore the ruins of Seneca Mill and Quarry. A few miles farther, you can stop for rations at **White's Ferry Store & Grill** and hear about the historic ferry operation. From there, you can ride along White's Ferry Road into the charming **Poolesville**, which was designated as an official "canal town" by the Canal Towns Partnership in 2020. At the north end of the county, take some time to enjoy **Dickerson Conservation Park**.

CANAL QUARTERS PROGRAM

Looking for a digital detox that will bring you closer to nature? The **Canal Quarters Lockhouse program**, managed by the C&O Canal Trust, provides guests the opportunity to step back in time and live like a lockkeeper for the night. Each of the seven historic lockhouses—with five in Montgomery County—are restored and furnished to reflect a different time period in the canal's rich history.



► LOCKHOUSE 22

Lockhouses 6, 10, and 21—aka "Swains"—offer a full amenity experience, including kitchens, bathrooms, electricity, heat, and air conditioning. For a rustic experience, lockhouses 22 and 25 are the perfect options for camping with a historic twist. Most lockhouses include fire rings for roasting marshmallows and historic nuggets are displayed throughout each lockhouse. All seven Canal Quarters lockhouses can sleep up to eight people. They have been used for romantic getaways (including some engagements and weddings!), family trips and reunions, girls' weekends, scout troop lodging, and a special place for celebrations. They book up fast, so be sure to reserve your date soon by visiting www.canalquarters.org/respite.



► GREAT FALLS TAVERN VISITORS CENTER



AFRICAN AMERICAN HERITAGE

After the Civil War, many free Black communities were established in Montgomery County. Today, their legacy can be seen in the remains of places where people lived, worked, and raised families.

The county's newest heritage experience, the **Josiah Henson Museum and Park**, opened in spring 2021. Built on the former plantation where Rev. Henson was enslaved, the museum illustrates his life, enslavement in Maryland, and the ongoing

struggles of racial equality.

From its beginnings in the 1890s, **Glen Echo Park** was not strictly segregated, but starting in 1931 the park did not admit Black patrons. In 1960, 13 protesters were denied a ride on the historic carousel, five of whom were

arrested for trespassing. Activists picketed for months amid counter-protests and harassment, and in 1961 the park was open to all.

The **Button Farm Living History Center**, situated inside **Seneca Creek State Park**, depicts 19th Century plantation life when enslaved labor shaped the landscape. Unlike most passive museum visits, guests are invited to interact by cultivating crops, learning a trade, or lending a hand on the farm chores. While there, visit the ruins of **Black Rock Mill**, where men from local Black communities worked after the Civil War.

St. Paul Community Church in Sugarland Forest was purchased with a deed that specified the land be used for religious worship, a school, and burial site for people of African descent. Martinsburg—one of the rare, racially integrated Black settlements in the county—retains the three anchor

buildings of the community: a church, school, and benefits society hall that are now known collectively as **Warren Historic Site**.

The **Edwards Ferry Lockhouse** on the C&O Canal sits where a ferry ran across the river to Virginia. Records show that freedom seekers used the ferry, waterway, and towpath to flee north to Pennsylvania. You can learn more at **Woodlawn Manor Cultural Park & Underground Railroad Experience Trail**. While there is no evidence that this site was involved in the Underground Railroad, the trail was created to educate visitors about this important part of the county's history.

The **Red Brick Courthouse** saw many cases involving African Americans' legal rights, but the previous building was where the Freedmen's Bureau worked with the courts to protect the rights of African Americans immediately following the Civil War. Meanwhile, the one-room **Boyd's Negro School** served as the only public school for African Americans in the area until 1936. The schoolhouse served students in grades 1-8, many of whom walked for miles to attend classes in the railroad town.



► MOVEMENT ROCKVILLE

GO PLAY INSIDE

As much as we wish it was always sunny and mild, Montgomery County has a variety of indoor activities to keep you entertained—no matter the weather.



► DAVE & BUSTERS



► IFLY

FLIGHTS OF FANCY

To take your day to new heights, find your wings as you soar inside a wind tunnel at **iFly**, an indoor skydiving facility. This safe and stable experience takes place within a flight chamber in Rockville and is realistic practice for flying. If you'd rather stay grounded, check out **Dream Aero**, an ultra-realistic flight simulator in Potomac. The cockpit is built to real-life specifications and a pilot instructor guides you through an immersive 3D experience that engages all your senses.

HEALTHY COMPETITION

For a competitive outing, **TopGolf** in Germantown is a top attraction for families, friends, colleagues—you name it! (Read more on page 51.) Or challenge your friends to intense laser tag games at **Shadowland Laser Adventures**. Is bowling more your style? **Lucky Strike Bethesda** is always serving up something fresh with a sporty menu and delicious cocktails. Enjoy premium bowling—including semi-private suites—and massive TV screens along with billiards and ping pong. If you're looking for a less traditional experience, gather at **Pinstripes** in North Bethesda. Enjoy the full-service Italian/American bistro food

and beverage menu while taking in the entertainment and excitement of bowling and bocce. And if sports just aren't your thing, head to one of two **Dave & Busters** in the county to play video games!

HIT THE ICE

Lace up your skates and learn from the pros at **Wheaton Ice Arena** or **Cabin John Ice Rink**. Attend lessons, clinics, and camps to strengthen your skills or rent either facility for a party. Both venues feature skate rentals as well as a pro shop for investing in your hobby.

CLIMB + JUMP

With thousands of feet of climbing terrain, **Movement Rockville** features extensive lead, top rope, and bouldering routes. The Rockville facility also offers indoor and outdoor climbing instruction, summer camps, and fitness training to prep anyone for the next level of climbing. Jump over to the active indoor park **ZavaZone** for 15 different attractions including trampolines, ninja courses, and ziplines. This adventurous, action-packed experience is fun for all ages. Or head to Gaithersburg's **SkyZone** trampoline park, where you can participate in freestyle bouncing, dodgeball, fitness programs, and more.

HOLE IN ONE



Whether you're a hobbyist or ready for the U.S. Open, there are numerous golf experiences throughout Montgomery County that are well-suited for every interest and skill level.

Welcome to our golfer's paradise, with nine public golf courses across the county. Three courses lie in Silver Spring, just miles from the Capital Beltway. **The Hampshire Greens Golf Course** offers country club service and amenities at a daily fee price. This visually intimidating course challenges golfers of all skill levels and offers a choice of four sets of tees stretching from 5,048 yards to over 6,800 yards from the championship tees. At just under 7,400 yards, the championship tees at **Northwest Golf Course** provide the longest experience in Montgomery County. Designed by Ault & Clark in 1964, the 27-hole facility is popular with golfers of all abilities and features a driving range with a

total of 41 stalls. **Sligo Creek Golf Course** is a 9-hole course that will challenge the best of golfers. Although the terrain is hilly, many enjoy walking the course's park-like setting before visiting the pro shop and full-service snack bar in the clubhouse.

From the front door to the fairways, **Laytonville Golf Course** in Gaithersburg is one of the most fun and friendly courses you'll find. Superb course conditions, competitive pricing, convenient location and outstanding service make it an excellent choice for tournaments and outings. It also serves as the county's premier learning center for youth, offering clinics, specialized summer golf camps, and both individual and group lessons. **Needwood Golf Course** in

Derwood offers an 18 hole course that is challenging, very playable and well-conditioned. It also offers a 9 hole "executive course" that is an outstanding layout for the beginner or the experienced golfer looking to sharpen their short game. The practice area offers a driving range, putting and chipping greens. With four sets of tees, generous fairways, and large greens the **Falls Road Golf Course** in Potomac is friendly to beginners, juniors, women, and senior golfers. It has a great mix of holes: the front nine is a parkland type course and the back nine is more tree lined, which makes it fun for golfers of all abilities.

Take refuge from the hectic pace of Greater D.C. at **Poolesville Golf Course**. With two scenic lakes, and

almost 7,000 yards of championship golf, this course offers generous landing areas, and large rolling greens. It also maintains world-class practice facilities, including a 2-acre short game practice area, and a range with both grass and artificial teeing areas. For spectacular views while you golf, visit **Little Bennett Golf Course** in Clarksburg. The hilly course offers several scenic views of Sugarloaf Mountain and has continuous cart paths. Advance reservations are recommended, especially on weekends and holidays.

Wet conditions? Head to **Rattlewood Golf Course** in Mt. Airy for a well-drained, challenging course with an interesting variety of holes that offer tempting risk/reward opportunities. The 9th



- 1 Falls Road Golf Course
- 2 Hampshire Greens Golf Course
- 3 Laytonville Golf Course
- 4 Little Bennett Golf Course
- 5 Needwood Golf Course
- 6 Northwest Golf Course
- 7 Poolesville Golf Course
- 8 Rattlewood Golf Course
- 9 Sligo Creek Golf Course

hole—a lengthy Par 5 with strategically placed bunkers both in the fairway and flanking the green—paves the way for a dog leg finish into the 18,000 square foot clubhouse for your turn stop.

MINI GOLF

Whether it's a daytime visit or an evening out, a round of miniature golf at **Bohrer Park at Summit Hall Farm** in Gaithersburg is a fun activity for the whole family. The beautifully landscaped course features 18 challenging holes in a park setting. To combine a family outing with some water fun, head to the **South Germantown Mini Golf & SplashPark**. Designed with delicate contour changes, sloping greens, and natural obstacles, the

accessible 18-hole course will challenge golfers of all ages (including adults). Afterwards, kids will have an excellent time and stay cool playing in the one-of-a-kind 280-jet water maze, cave with a waterfall, water bucket drops, slide, and spraying animals.

DRIVING RANGES

Part of Montgomery Parks, South Germantown Driving Range operates year-round, features 33 elevated tees (10 covered), a putting green, and a sand bunker. The facility also includes a renovated Clubhouse with seating area, DirectTV, and a restroom. Or, elevate your game at Olney Golf Park's premier driving range, wedge range, and short-game complex.

SWING AWAY AT TOP GOLF

If you're looking for a unique golf experience for experts and novices alike, head to **Topgolf Germantown**. Enjoy an afternoon of competition, excitement, and great food and drinks. They've made socializing a sport through a blend of technology and entertainment—and that's just the game! If you journey through the venue on any given day, you'll find a place buzzing with energy. The open-air facility features dozens of climate-controlled hitting bays for year-round comfort. Plus you can watch your favorite pro golfers hit the links (or take in other sports and shows) with HDTVs in every bay and throughout the onsite sports bar and restaurant.

Amped to keep swinging? Visit the **Bethesda North Marriott Hotel & Conference Center** (across the street from Pike + Rose). Spend the evening enjoying an immersive social experience in your own comfy lounge with fantastic food and beverage service at the hotel's **Topgolf Swing Suite**. The private simulator bay and massive screen offers a variety of virtual games, including signature Topgolf target games zombie dodgeball, hockey, baseball, football, and carnival games. The overall experience delivers a one-of-a-kind simulation that's fun for golfers and non-golfers alike.



➤ TOPGOLF GERMANTOWN



► THE ADVENTURE PARK AT SANDY SPRING

OUTDOOR ADVENTURES

FLYING HIGH

Go Ape Treetop Adventure Park is located inside **Rock Creek Regional Park** in Rockville and is home to six zip lines, numerous rope ladders, 44 crossings to include the Stirrups and Twister, two Tarzan swings, and America's first skateboard zip line. Another adventure awaits at **The Adventure Park in Sandy Spring**. The park consists of 13 different courses varying in degree of difficulty. Each trail has zip lines, but primarily consists of bridges between tree platforms made of rope, cable, and wood configurations, creating over 190 unique challenges. To catch air in a different way, visit **Rockville Skate Park**. Get a free membership online to experience the

15,000-square-foot concrete skate park that features a kidney bowl, manual pads, quarter pipes, radius wedge, rainbow grind rail, grind ledge, slappy curb, and pole. It is designed to be fun for every rider, regardless of age, style, skill level, or wheel type.

HOMEGROWN FUN

Head to **Butler's Orchard** for seasonal activities that are fun for the whole family. Take a hayride down the Bunny Trail in April during the Bunnyland Festival. Bask in the glory of acres of sunflowers mid-summer and pick your own berries. In September and October, come for the Pumpkin Festival and select your next jack-o-lanterns.

PLAYGROUNDS AND CAROUSELS

There are many playgrounds in parks across the county, but locals recommend these two. **Sligo Creek Park** not only has multiple playgrounds but also features exercise stations, basketball courts, tennis courts, wooded trails, and grills for cookouts. Over in Bethesda, **Cabin John Park** is popular for its mini train, newly renovated playground, and natural surroundings. If you'd like to ride a century-old carousel, you have two options in Montgomery County! Installed at **Glen Echo Park** in 1921, the canopy and the carved figures of its carousel were made by the Dentzel Carousel Company and provide a classic example of hand woodcarving

popular during the early 1900s. From 1983 through 2003, the entire carousel was fully restored, and it is now listed on the National Register of Historic Places. Constructed in 1915, the Ovid Hazen Wells Carousel at **Wheaton Regional Park** continues to bring joy to people each Spring and Summer. With 33 jumping horses, three zebras and two chariots, this carousel is one of a kind. Having served as the Smithsonian Carousel on the National Mall from 1967 until 1981, this beautiful work of art has seen some amazing American history take place.

HOLIDAY LIGHTS

Revel in the glow of millions of sparkling lights during the holiday season. The annual display at **Brookside Gardens**, Garden of Lights, transforms the park into a magical winter wonderland. Stroll through the one-half mile, outdoor, walk-through exhibit and enjoy the twinkling lights and glimmering one-of-a-kind displays adorning the flowerbeds and grounds throughout the 50-acre horticultural gem in Wheaton. Winter Lights is a 3.5 mile drive through the enchanted setting of **Seneca Creek State Park** that takes you past more than 450 illuminated displays and beautifully lit trees that light up the night. Add to the festivities by tuning into 97.1 WASH FM for holiday music. In Kensington, experience the Festival of Lights at the **Washington, D.C. Temple**. The presentation features over 400,000 lights and beautifully decorated trees. The Visitors' Center exhibits nativities from around the world and hosts many holiday performances that are free and open to the public.



HOW DOES YOUR GARDEN GROW?

If you're searching for tranquility, visit one of the county's beautiful public gardens. Whether you want to spend a quick hour or have a whole day to wander, these gardens are sure to bring you peace.

The famous, 50-acre **Brookside Gardens** features an azalea garden, rose garden, children's garden, formal garden, fragrance garden, and Japanese-style garden. In the summer, stay for the Wings of Fancy exhibit featuring hundreds of butterflies. **McCrillis Gardens & Gallery** also has azaleas, along with various bulbs, spring wildflowers, and shade-loving perennials in bloom. Or check out **Brighton Dam's Azalea Garden** located at the **Triadelphia Reservoir** to witness more than 22,000 azalea bushes over 5 acres in a hardwood forest.

Visit **Croydon Creek Nature Center** to explore a Monarch butterfly garden perfect for wandering and a winding creek bustling with wildlife, or head to the grounds of **Glenstone Museum** to walk among native flora—including Virginia spiderwort, foxglove beardtongue, and southern magnolia. (Reservations Required)

The plantings at **Meadowside Nature Garden's Habitat Garden** were designed to attract birds, wildlife, and bees and other pollinators. More native plants can be found at **Woodend Mansion Garden and Nature Sanctuary**, where azaleas and spring wildflowers grow alongside a hemlock grove. On a clear day in mid-July, wander through 30 acres of vibrant sunflowers at the **McKee-Beshers Wildlife Management Area**.

If you've seen enough flowers, enjoy the vegetable and herb gardens and apple orchard within the massive 455-acre **Agricultural History Farm Park** or visit **Butler's Orchard** to meander through fields of berries, pumpkins, or even Christmas trees depending on the season.



NATURE'S FINEST

No matter the time of year, it's always a great day to be outdoors. Montgomery County is home to hiking, cycling, kayaking, and more. And if you're into spending the night beneath the stars, camping options abound.

HIKING

Many of the county's parks offer walking and hiking paths. But for a serious hike, head to the top of **Sugarloaf Mountain** for a spectacular adventure and a stunning view. The popular Blue Northern Peak Trail is a 5.5-mile loop that's rated as difficult.

The **C&O Canal National Historical Park** has its flat towpath, but near **Great Falls** is the real workout: **Billy Goat Trail**. The 4.7-mile trail has three separate sections—take A if you like rock scrambling.

It's still accessible for families as long as kids are old enough to climb safely.

CYCLING

Montgomery County's rural roads are safe for cycling and provide gorgeous scenery to boot. Off-road, the **C&O Canal's** 184.5 miles of flat towpath runs parallel along the Potomac River. The **Capital Crescent Trail** intersects with the towpath, leading from the river all the way to Washington, D.C. There's also the **Bethesda Trolley Trail**, which

is a 4-mile path that follows an old streetcar line.

KAYAKING, CANOEING, AND PADDLEBOARDING

Experience **Little Seneca Creek Park**, which includes Clopper Lake, where kayak rentals are available May through September. Visitors to **Rock Creek Regional Park** can enjoy the beautiful Lake Needwood in rental kayaks,

rowboats, canoes, or pedal boats. Guests can also take a tour of the lake aboard the **Needwood Queen** during the summer season. Explore **Black Hill Regional Park** via rowboat, kayak or canoe or on a stand-up paddleboard, all available for rent onsite.

ROCK CLIMBING

Host to a number of climbs, **Sugarloaf Mountain** is ideal for both top rope and trad climbing. Gather your gear and make your way to one of the two main areas: Devil's Kitchen and Middle Earth.

CAMPING

There are small campsites along the **C&O Canal towpath** as well as **five lock-houses** available for rent. The Robert C. McDonnell Campground in **Cabin John Park** is a small, tent-only campground, while **Little Bennett Campground** in Clarksburg has campsites, cabins, yurts, and RV sites. In College Park, **Cherry Hill Park** offers a premium camping experience with camping, RVing, cabins, and yurts. For large groups and events, **Rockwood Manor** in Potomac is a unique retreat destination with camp lodging and converted cabins for up to 85 guests.



FALLS AND RAPIDS AT GREAT FALLS

Experience the beauty of the powerful Potomac River as water flows across rocks and dips along the border between Maryland and Virginia.



ADVENTURES FOR EVERYONE

SUMMER CAMP • KAYAKING SCHOOL
FARM-TO-TABLE • HORSEBACK RIDING

calleva.org
RIVER + TRAIL + FARM



All Guests Have a Suite Stay!

87 residential style suites with separate living & sleeping areas include fully equipped kitchen

Luxurious Suite Dream beds

Complimentary daily hot full breakfast and Wednesday evening dinner & drinks in our spacious lodge

37-inch high definition flat screen panel TVs

Complimentary 24-hour business center, Wi-Fi and Parking

24-hour Suite Shop®



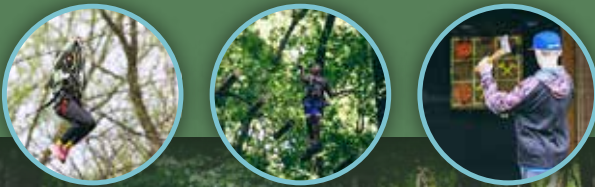
**HOMEWOOD
SUITES** by Hilton™

RockvilleGaithersburg.HomewoodSuites.com

14975 Shady Grove Road | Rockville, Maryland, 20850 | 240-507-1900

CLIMBING | ZIPLINING | AXE THROWING

NEXT STOP: ADVENTURE



**The
Adventure Park**
AT SANDY SPRING FRIENDS SCHOOL

Sandy Spring, MD
www.TheAdventurePark.com
info@TheAdventurePark.com



As Montgomery County's premier farm brewery, we are committed to sustainability, local ingredients, and brewing beer using the best practices possible. Our beers include ingredients grown/produced on the farm and our production schedule is directly related to harvest timing. The farm has been in the family for over 60 years, and we pride ourselves in a brewery that functions in harmony with the wide array of activities that make this place what it is today. Cheers! We'll see you at the farm!

WAREDACABREWING.COM | 301-774-BEER
4017 Damascus Road | Laytonsville, MD 20882



Montgomery County boasts an authentic dining experience featuring globally-inspired cuisine from cultures around the world. Hidden gems and tasty treasures can be found among more than 1,000 restaurants across the county, where there's an outstanding dining option for every taste and occasion.

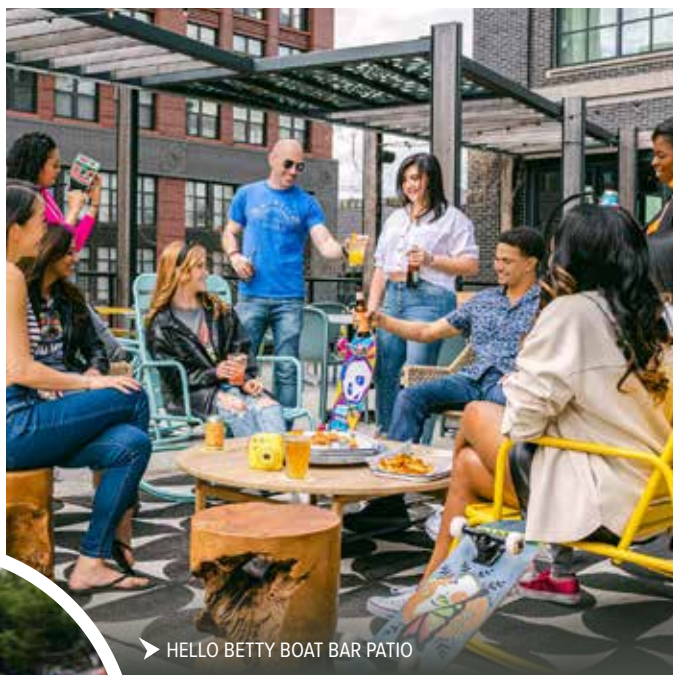
EXPLORE BY CUISINE

Pizza lovers are always in search of the best spots to grab a slice. **Frankly... Pizza!** features the best local brick oven pizza, and **Gentleman Jim's** serves a classic pizza—with Swiss cheese. For something totally different, visit **Stained Glass Pub** for tiny square slices to pop like potato chips!

Any time is the right time for a taco, and you can find authentic options around the county. **Ixtapalapa Taqueria**

serves affordable tacos and **Tortacos** offers an LA-style taco menu. **Gringos & Mariachis** is great for an intimate date night or happy hour. For a more upscale experience with authentic Mexican ambiance, check out **Nada**.

Looking for vegan-friendly options? Find a variety of plant-based eateries across the county. **St. Veg** specializes in homestyle vegan cooking, while **Planta's** menu ranges from American comfort food to savory Italian



▶ HELLO BETTY BOAT BAR PATIO



dishes to creative twists on Asian cuisines. **Vegetable Garden** offers a huge menu of vegan Chinese and sushi options, and **Yuan Fu Vegetarian** is a vegan Chinese restaurant. Each location of **Shouk** is kosher-certified and halal and features foods inspired by Tel Aviv.

For sweet treats, stop by each vendor at **Lancaster County Dutch Market** for an assortment of pies, doughnuts, and 35 kinds of fudge. If you'd rather be served, get chocolate delicacies at **Ricciutis Kitchen**, designer desserts at **Georgetown**

Cupcake, or Instagrammable ice cream at **Alpaca Desserts** and **Moorenko's Ice Cream Café**.

DIVERSE OWNERSHIP

The county is home to a wide variety of Black-owned restaurants. Wake up with a gourmet breakfast sandwich from **Butter Me Up in Montgomery Mall**. For lunch, visit **Hardy's BBQ**, a food truck with a home at the year-round **Montgomery Farm Women's Cooperative Market**. At dinnertime, head to **All Set Restaurant & Bar** for a Southern-style twist on New England coastal cuisine.

Many Black-owned bistros in the county serve up global

10 WEEKEND BRUNCHES THAT ARE WORTH EVERY DOLLAR

With so many great spots offering variations of our favorite weekend meal, picking the perfect place to indulge can be a bit overwhelming. Luckily, you don't have to pick just one! To get you started, we've pulled 10 of the best places to brunch in Montgomery County, Maryland, that are worth every dollar.

- 1 Fogo de Chao**
11600 Old Georgetown Rd., North Bethesda
- 2 World of Beer**
7200 Wisconsin Ave, Bethesda
196 E. Montgomery Ave #B, Rockville
- 3 MoCo's Founding Farmers**
12505 Park Potomac Ave., Potomac
- 4 Barrel and Crow**
4867 Cordell Ave, Bethesda
- 5 La Malinche**
8622 Colesville Rd, Silver Spring
- 6 Silver Diner**
9811 Washingtonian Blvd., Gaithersburg
12276 Rockville Pike, Rockville
- 7 Pinstripes**
11920 Grand Park Ave, North Bethesda
- 8 Matchbox**
7278 Woodmont Ave, Bethesda
1699 Rockville Pike, Rockville
919 Ellsworth Dr, Silver Spring
- 9 Summer House Santa Monica**
11825 Grand Park Ave, North Bethesda
- 10 Clyde's Tower Oaks Lodge**
2 Preserve Pkwy, Rockville

menus. For traditional West African cuisine, check out **African Palace** and **Mansa Kunda**. **Beteseb** is a family-owned restaurant that serves authentic Ethiopian food. **Ėkó House** is a Pan-African restaurant celebrating the rich Nigerian culture, while **Rainbow African Restaurant** brings the flavors of Ghana. Savor the taste of the Caribbean at two authentic Jamaican eateries: Try the coconut rundown fish soup at **Island Pride** and the variety of bold flavors at **Negril The Jamaican Eatery**.

Women-owned restaurants



➤ AC HOTEL BETHESDA

across Montgomery County are creating a seat at the table, so to speak. **Miss Toya's Creole House** features a traditional New Orleans menu with an avant-garde touch. Find authentic Montreal delicacies at **Pop Up Poutine**, which also operates the **Taste of Montreal** food truck. **Scratch Kitchen & Bistro** offers healthy local food sourced from local farmers. Finish the night at **Quarry**

House Tavern, a basement dive bar with a cult following that serves high-quality bar food and a huge drinks menu.

DESTINATION DINING

Does the journey make the food taste better? Find out for yourself by planning an excursion to a world-class restaurant. In Brookeville, **The Manor at Silo Falls** serves fresh seasonal menus

and handcrafted cocktails in a rustic and relaxed setting.

The Crossvines is an escape for wine enthusiasts that features locally-grown and processed wines and a curated menu sure to delight—all in a peaceful setting. (Read more on page 35.)

Zinnia serves customers in Silver Spring at their cafe, restaurant, and rustic tavern settings. You can even dine amid the surrounding gardens. **The Comus Inn's** panoramic views of Sugarloaf Mountain draw almost as many visitors as its local brews, live music, and gourmet food.



FARM FARE TO FRESH FORKFULS

Take the idea of “farm-to-table” to the next level with these unexpectedly fresh dining experiences.

Explore Montgomery County's rural side through satisfying meals prepared in partnership with local growers, suppliers, vintners, and brewers. From a company picnic to a chic date night out to hearty, family-friendly barbeque feasts, we've rounded up a few of our favorite options.

Bask in lush views while enjoying a meal comprised of locally sourced ingredients and live, local music.

Tastes of Calleva Dirty Dinners give

adults an opportunity to appreciate the relaxed joys of farm life. If you're feeling adventurous, consider riding the zip line!

Whether you spell it barbecue or BBQ, the flame-kissed goodness is the centerpiece of **High Point Farm's** catering services. Their expert team of chefs will bring the grills to you or serve you onsite at the farm.

Known as “the company picnic place,” **Smokey Glen Farm** encourages guests to mix business with a hearty

helping of their famous barbeque chicken. Throughout the summer, join in their Fridays on the Farm events.

Nestled in the midst of one of the nation's leading agricultural reserves, **The Crossvines** is a winery, research farm, dining destination, and learning hub all in one.

Woodbourne Creamery at Rock Hill Orchard is the county's only “cow to cone” ice cream shop and dairy. From grass-fed cows to the farm market, nothing extra is added.

We Are **HILTON** We Are **HOSPITALITY**



NEW LOOK, MORE SPACE...SAME GREAT LOCATION!

- ❖ 315 newly renovated guest rooms & suites
- ❖ Over 35,000 sq. ft. of flexible meeting space
- ❖ 25 Meeting rooms with on site A/V
- ❖ Convenient location, steps away from Twinbrook Metro Station (Red Line)
- ❖ Walking distance to shops, restaurants and stores



- ❖ Inclusive packages & exceptional culinary staff
- ❖ Pike Café, proudly serving Starbucks coffee
- ❖ Olive's Modern American Bistro is open for breakfast, lunch, happy hour & dinner
- ❖ Daily happy Hour offering appetizers, local craft brews and over 30 wines by the glass

www.HiltonRockville.com


Hilton
WASHINGTON DC/ROCKVILLE HOTEL
& EXECUTIVE MEETING CENTER



1750 Rockville Pike ♦ Rockville, MD 20852 ♦ 301-468-1100

TASTEMAKERS *Trail*TM

From savoring a pint on a working horse farm to sipping a glass of rosé at the base of Sugarloaf Mountain, explore the Tastemakers Trail craft beverage tour for the perfect drink-centric weekend.

WE'LL DRINK TO THAT

Maryland has a rich farming history that is still alive today. This legacy, paired with Montgomery County's renowned hospitality and the entrepreneurial spirit that spans every acre, permeates every stop on the **Tastemakers Trail**. Montgomery County Tastemakers are brewing, fermenting, distilling and roasting some of the best local libations in the state of Maryland!

WEEKEND ITINERARIES

With so many Tastemaker experiences, it's easy to create a beverage-centric weekend in Montgomery County. Sip and savor your way around farm-chic tasting rooms and sophisticated urban wineries. Enjoy a pint or two overlooking the rolling hills of the 93,000-acre Agricultural Reserve or create-your-own urban brewery walking tour in Silver Spring. Pay a visit to

the largest organic coffee roaster in Maryland or sample craft spirits at the county's first and only distillery. For drink-centric weekend getaway ideas, scan the QR code below and visit the Tastemakers Trail website.

EXPLORE RESPONSIBLY

Everyone in your group can experience the Tastemakers Trail by taking advantage of the transportation options in Montgomery County. There's an extensive network of Uber and Lyft drivers in the county, and a few breweries on the trail are also accessible and within walking distance from the Red Line Metro, making traveling from Washington, DC a breeze. There are also several high-quality motor coach and driver services available in the area if you are looking to create your own tour experience.

Scan QR code for a full listing of craft beverages in Montgomery County.








▶ WAREDACA BREWING CO.



► TWIN VALLEY DISTILLERS



OUR *Top 5* FAVORITE EXPERIENCES

-  Dive into the complexities of wine and maybe even discover your new favorite food pairing at **The Crossvines**. Take a guided tour which blends the story and goals of The Crossvines with educational insights into winemaking with a memorable wine tasting journey.
-  Have you ever wanted to make your own wine? **Olney Winery** in Mid County offers this unique experience and has expert winemakers to take you through each step of the process, from tasting wine through bottling to putting a cork in your custom creation. They even have a graphic designer onsite to help craft your labels.
-  Step into **Mayorga Organics** for fresh coffee that's processed and roasted right before your eyes in the shop's roasting facility. You can also feel good about where your quality caffeine is coming from since the team behind the café are advocates of equal partnership with their farming partners in Latin America.
-  Enter the tasting room at **Twin Valley Distillers** for delicious spirits made using local grains and products. "Maryland authentic" is a term Twin Valley uses to describe their revival of handcrafted spirit-making. The company sources all grain and raw products exclusively within a 50-mile radius of their Rockville location. Grains are also recycled back to local farms for animal feed.
-  Located on a 220-acre horse farm in Laytonsville, **Waredaca Brewing Company** is committed to sustainability, local ingredients and brewing beer using the best practices possible. The farm has been in the same family for over 60 years and offers an unforgettable beer yurt experience during the fall and winter seasons.



► OLNEY WINERY



DISTINCTLY DIFFERENT

In an area as richly diverse as Montgomery County, you'll find a wealth of out-of-the ordinary venues. Gravitating towards lush gardens or something more rustic? How about a hip urban locale in the center of all the action? If you're looking for a venue that is distinctly different, consider these locations.

AFI SILVER THEATRE AND CULTURAL CENTER

Silver Spring
Vibe: Red Carpet Elegance

AMP BY STRATHMORE

North Bethesda
Vibe: Nightlife Cool

BOLGER CENTER

Potomac
Vibe: Elegantly Appointed

BROOKSIDE GARDENS

Wheaton
Vibe: Picturesque Paradise

CALLEVA FARM

Poolesville
Vibe: Farm-to-Table Charm

GLEN ECHO PARK

Glen Echo
Vibe: Art Deco Inspired

GLENVIEW MANSION

Rockville
Vibe: Historic Charm

HIGH POINT FARM

Clarksburg
Vibe: Upcounty Living

KENTLANDS MANSON

Gaithersburg
Vibe: Home, Elevated

MARYLAND SOCCERPLEX & DISCOVERY SPORTS CENTER

Germantown
Vibe: Sports Venue

MUSIC CENTER & MANSION AT STRATHMORE

North Bethesda
Vibe: Gala Grandeur

ROCKWOOD MANOR

Potomac
Vibe: Woodland Escape

SANDY SPRING MUSEUM

Sandy Spring
Vibe: Rustic Elegance

SMOKEY GLEN FARM

Gaithersburg
Vibe: Picnic in the Meadow

SILVER SPRING CIVIC BUILDING AT VETERANS PLAZA

Silver Spring
Vibe: Lots of Space for All

THE CROSSVINES

Poolesville
Vibe: Educational

THE FILLMORE

Silver Spring
Vibe: Rock Star Cool

THE LODGE AT LITTLE SENECA CREEK

Boyd's
Vibe: Rustic Lodge

VISARTS

Rockville
Vibe: Urban Artistry

WOODEND SANCTUARY & MANSION

Chevy Chase
Vibe: Urban Grace



Find Wellness and Balance on the Pike!

We do more than care about your wellness - we're inspired by it. Everything we do is designed to give you choices so you can stay well on the road. Travelers like you, are tired of having their fitness routines disrupted when traveling. That's why we make sure you stay well while you're away.



Good Neighbor Perks:

- 15% off our Best Flexible Rate
- Complimentary breakfast for one (1)
- Complimentary shuttle within a 3 mile radius

Additional Group Concessions "Pick your Perks":

For master bills over \$15,000 pick one perk, over \$25,000 pick two perks (exclusive of taxes)

- Up to 60,000 IHG business rewards points
- Complimentary meeting planner room
- Complimentary one hour hosted beer and wine reception
- Complimentary room rental
- Complimentary coffee and pastry break

Reach out to our Accomplish More Sales Team

(301) 917-9084 or evenrockville@ihg.com





FEELING INSPIRED?

Let our ambassadors help you plan your next group event. Contact the Visit Montgomery team today at sales@visitmontgomery.com.

than 1,000 ethnically diverse restaurants. Attendees will find delectable Italian food, delicious pastries, scrumptious pizza, smooth ice cream, spicy Asian fare, traditional American food, and so much more! Once they're off the clock, they can also experience our **Tastemakers Trail** and explore local craft beverage options.

CHOOSE YOUR ADVENTURE

Montgomery County is comprised of bustling urban districts, serene suburbs, and a 93,000-acre Agricultural Reserve. No matter what kind of experience your visitors want, we can make it happen!

Six must-see areas that offer a big city vibe with small town comforts include **Rockville Town Center, Pike + Rose** in North Bethesda, **Downtown Silver Spring, Bethesda Row, rio Gaithersburg**, and **Downtown Crown** in Gaithersburg.

For those with an interest in the arts, there is a wide range of world-class museums, galleries, theaters, and music venues here. Top favorites for groups include **Strathmore Music Center and Mansion, AMP by Strathmore, The AFI Silver Theatre**, and **The Fillmore Silver Spring**.

MEET AND GREET

There's a reason Montgomery County is a popular destination for groups of all kinds to meet. From business meetings to industry conferences to trade shows and more, your attendees will jump at the chance to visit.

PRIME LOCATION

While Montgomery County is a premier destination all on its own, it's also a great location for day trips to the region's other cities. Baltimore, Annapolis, and Washington, D.C. are all within an hour's drive.

Not to mention the ease

with which you can get here!

With three major airports nearby, your attendees will have no problem finding the right flight. Choose between **Washington Dulles International Airport (IAD)**, **Ronald Reagan Washington National Airport (DCA)**, and

Baltimore/Washington Thurgood Marshall International Airport (BWI) for your trip.

Also, the bulk of the **Metro Red Line** runs through the county, giving attendees an accessible way to traverse the county and trek into D.C.

CREATURE COMFORTS

There's always room in one of 56 hotels, numerous unique venues, and the grand **Bethesda North Marriott Hotel & Conference Center**. With 9,700+ sleeping rooms and 974,000+ square feet of meeting space, the options are plentiful for both large and small groups.

Foodies will be impressed with the choices among more



Legendary Venue Epic Events

This incredible space is the perfect location to host your corporate event, private concert, wedding, reception or business meeting. With access to the world's greatest musical entertainment, full service event production, state-of-the-art lighting and sound, custom menus and mixology - our unique venue will exceed expectations of even the most discerning guest.

Make Your Next Event Epic

Corporate Receptions	Holiday parties
Galas	Weddings
Awards Ceremonies	Graduation Parties
Fundraisers	Bar/Bat Mitzvah's



**AC HOTEL BY MARRIOTT
BETHESDA DOWNTOWN**
4646 Montgomery Avenue
Bethesda, MD 20814
marriott.com/wasba

**ACTIVITY CENTER AT BOHRER
PARK, SUMMIT HALL FARM**
506 South Frederick Avenue
Gaithersburg, MD 20877
gaithersburgmd.gov

**ADVENTURE PARK AT
SANDY SPRING**
16701 Norwood Road
Sandy Spring, MD 20860
sandyspringadventurepark.org

**AFI SILVER THEATRE AND
CULTURAL CENTER**
8633 Colesville Road
Silver Spring, MD 20910
afisilver.afi.com

**AGRICULTURAL HISTORY
FARM PARK**
18400 Muncaster Road
Derwood, MD 20855
montgomeryparks.org

**ALLY CHARTER BUS
WASHINGTON, DC**
2141 P Street NW, Suite 103
Washington, DC 20037
allybus.com

AMERICAN INN OF BETHESDA
8130 Wisconsin Avenue
Bethesda, MD 20814
american-inn.com

AMP BY STRATHMORE
11810 Grand Park Avenue
North Bethesda, MD 20852
strathmore.org/our-spaces/amp/

**ARTS AND HUMANITIES COUNCIL
OF MONTGOMERY COUNTY**
801 Ellsworth Drive
Silver Spring, MD 20910
creativemoco.com

ARTS BARN
311 Kent Square Road
Gaithersburg, MD 20878
gaithersburgmd.gov

**BEST WESTERN PLUS ROCKVILLE
HOTEL & SUITES**
1251 W. Montgomery Avenue
Rockville, MD 20850
Bestwestern.com/Rockville

BETHESDA MARRIOTT
5151 Pooks Hill Road
Bethesda, MD 20814
bethesdamarriott.com

**MARRIOTT BETHESDA DOWNTOWN
AT MARRIOTT HQ**
7707 Woodmont Avenue
Bethesda, MD 20814
marriott.com/wasbd

**BETHESDA NORTH MARRIOTT
HOTEL & CONFERENCE CENTER**
5701 Marinelli Road
North Bethesda, MD 20852
bethesdanorthmarriott.com

BETHESDA ROW
4950 Elm Street
Bethesda, MD 20814
bethesdarow.com

BETHESDA URBAN PARTNERSHIP
7700 Old Georgetown Road
Bethesda, MD 20814
bethesda.org

BOLGER CENTER HOTEL
9600 Newbridge Drive
Potomac, MD 20854
bolgercenter.com

BROOKSIDE GARDENS
1800 Glenallan Avenue
Wheaton, MD 20902
montgomeryparks.org

BROOKSIDE NATURE CENTER
1400 Glenallan Avenue
Wheaton, MD 20902
brooksidenature.org

BUTLER'S ORCHARD
22222 Davis Mill Road
Germantown, MD 20876
butlersorchard.com

**C&O CANAL NATIONAL
HISTORICAL PARK**
1850 Dual Highway, Suite 100
Potomac, MD 21740
nps.gov/choh

C&O CANAL TRUST
1850 Dual Highway
Suite 100
Hagerstown, MD 21740
canaltrust.org

**C&O CANAL QUARTERS
LOCKHOUSES**
canaltrust.org

CABIN JOHN ICE RINK
10610 Westlake Drive
Rockville, MD 20852
montgomeryparks.org

CALLEVA
19936 Fisher Avenue
Poolesville, MD 20837
calleva.org

CAMBRIA SUITES ROCKVILLE
1 Helen Heneghan Way
Rockville, MD 20850
cambriasuitesrockville.com

**CANOPY WASHINGTON DC
BETHESDA NORTH**
940 Rose Avenue
North Bethesda, MD 20852
canopybethesdanorth.com

CHERRY HILL PARK
9800 Cherry Hill Road
College Park, MD 20740
cherryhillpark.com

CITY OF GAITHERSBURG
31 South Summit Avenue
Gaithersburg, MD 20877
gaithersburgmd.gov

CITY OF ROCKVILLE
111 Maryland Avenue
Rockville, MD 20850
rockvillemd.gov

CLARA BARTON HOUSE
5801 Oxford Road
Glen Echo, MD 20812
nps.gov/clba

CLARKSBURG PREMIUM OUTLETS
22705 Clarksburg Road
Clarksburg, MD 20871
simon.com/clarksburg

CLEAR SKIES MEADERY
15201 Display Court
Rockville, MD 20850
clearskiesmeadery.com

COMFORT INN GAITHERSBURG
16216 Frederick Road
Gaithersburg, MD 20877
comfortinn.gaithersburg.com

**COPPER CANYON GRILL
GAITHERSBURG**
100 Boardwalk Place
Gaithersburg, MD 20878
ccgrill.com/gaithersburg

**COPPER CANYON GRILL
SILVER SPRING**
928 Ellsworth Drive
Silver Spring, MD 20910
ccgrill.com/silverpring/

**COUNTRYSIDE ARTISANS OF
MARYLAND**
countrysideartisans.com

**COURTYARD BY MARRIOTT
BETHESDA CHEVY CHASE**
5520 Wisconsin Avenue
Chevy Chase, MD 20815
marriott.com/wasvy

**COURTYARD BY MARRIOTT
ROCKVILLE**
2500 Research Boulevard
Rockville, MD 20850
marriott.com/wasrv

**COURTYARD BY MARRIOTT
SILVER SPRING DOWNTOWN**
8506 Fenton Street
Silver Spring, MD 20910
marriott.com/wassv

**COURTYARD BY MARRIOTT
SILVER SPRING NORTH**
12521 Prosperity Drive
Silver Spring, MD 20904
marriott.com/wasss

**COURTYARD BY MARRIOTT
WASHINGTONIAN**
204 Boardwalk Place
Gaithersburg, MD 20878
marriott.com/wascg

**CURRENCY EXCHANGE
INTERNATIONAL**
7101 Democracy Boulevard
Bethesda, MD 20817
bethesdacurrencyexchange.com

DC CHARTERS
202-903-0059
dccharterbuscompany.com

**DOUBLETREE BY HILTON
WASHINGTON DC NORTH/
GAITHERSBURG**
620 Perry Parkway
Gaithersburg, MD 20877
hilton.com

**DOUBLETREE BY HILTON
SILVER SPRING**
8727 Colesville Road
Silver Spring, MD 20910
silverspring.doubletree.com

DOWNTOWN SILVER SPRING
916 Ellsworth Drive
Silver Spring, MD 20910
downtownsilverspring.com

**DOWNTOWN SILVER SPRING
URBAN DISTRICT**
8110 Georgia Avenue
Silver Spring, MD 20910
silverspringdowntown.com

EAGLE BANK
7815 Woodmont Avenue
Bethesda, MD 20814
eaglebankcorp.com

**EMBASSY SUITES BY HILTON
BETHESDA**
6711 Democracy Boulevard
Bethesda, MD 20817
hilton.com

**ELDER PINE BREWING &
BLENDING CO.**
4200 Sundown Road
Gaithersburg, MD 20882
elderpine.com

EVEN HOTEL ROCKVILLE
1775 Rockville Pike
Rockville, MD 20852
evenhotels.com

EXTRAORDINARY ENTERTAINMENT
7609 Airpark Road, Suite A
Gaithersburg, MD 20879
bookextraordinary.com

F. SCOTT FITZGERALD THEATRE
603 Edmonston Drive
Rockville, MD 20851
rockvillemd.gov/theatre

**FAIRFIELD INN & SUITES BY
MARRIOTT GERMANTOWN
GAITHERSBURG**
20025 Century Boulevard
Germantown, MD 20874
marriott.com/wasge

FALLS ROAD GOLF COURSE
10800 Falls Road
Potomac, MD 20854
mcggolf.com

**FEDERAL REALTY
INVESTMENT TRUST**

909 Rose Avenue
North Bethesda, MD 20852
federalrealty.com

**FOGO DE CHAO BRAZILIAN
STEAK HOUSE**

11600 Old Georgetown Road
North Bethesda 20852
fogodechao.com/location/bethesda/

**GAITHERSBURG MARRIOTT
WASHINGTONIAN CENTER**

9751 Washingtonian Boulevard
Gaithersburg, MD 20878
marriott.com/waswg

**GAITHERSBURG—GERMANTOWN
CHAMBER OF COMMERCE**

910 Clopper Road
Suite 205N
Gaithersburg, MD 20878
ggchamber.org

GLEN ECHO PARK

7300 MacArthur Boulevard
Glen Echo, MD 20812
glenechopark.org

GLENSTONE MUSEUM

12100 Glen Road
Potomac, MD 20754
glenstone.org

GLENVIEW MANSION

603 Edmonston Drive
Rockville, MD 20851
rockvillemd.gov/glenview

GOGO CHARTERS

1200 Eton Court, NW, 3rd Floor
Washington, DC 20007
gogocharters.com/washington-dc-charter-bus

**GREATER BETHESDA CHAMBER
OF COMMERCE**

7910 Woodmont Avenue
Bethesda, MD 20814
greaterbethesdachamber.org

**GREATER SILVER SPRING
CHAMBER OF COMMERCE**

8601 Georgia Avenue
Suite 203
Silver Spring, MD 20910
gsscc.org

GROSSBERG COMPANY, LLP

6500 Rock Spring Drive,
Suite 200
Bethesda, MD 20817
grossberg.com

HAMPSHIRE GREENS GOLF COURSE

616 Firestone Drive
Silver Spring, MD 20905
mcggolf.com

**HAMPTON INN & SUITES BY
HILTON WASHINGTON DC NORTH—
GAITHERSBURG**

960 North Frederick Avenue
Gaithersburg, MD 20879
gaithersburgsuites.hamptoninn.com

HERITAGE MONTGOMERY

12535 Milestone Manor Lane
Germantown, MD 20876
heritagemontgomery.org

HIGH POINT FARM

23730 Frederick Road
Clarksburg, MD 20871
highpointcatering.com

HILTON GARDEN INN BETHESDA

7301 Waverly Street
Bethesda, MD 20814
bethesda.hgi.com

**HILTON GARDEN INN
ROCKVILLE—GAITHERSBURG**

14975 Shady Grove Road
Rockville, MD 20850
rockvillegaithersburg.hgi.com

**HILTON GARDEN INN SILVER
SPRING WHITE OAK**

2200 Broadburch Drive
Silver Spring, MD 20904
silverspring.hgi.com

**HILTON WASHINGTON DC/
ROCKVILLE HOTEL & EXECUTIVE
MEETING CENTER**

1750 Rockville Pike
Rockville, MD 20852
hiltonrockville.com

**HOLIDAY INN EXPRESS
WASHINGTON DC N-SILVER SPRING**

7990 Georgia Avenue
Silver Spring, MD 20910
ihg.com

HOLIDAY INN GAITHERSBURG

2 Montgomery Village Avenue
Gaithersburg, MD 20879
higaithersburg.com

**HOME2 SUITES BY HILTON
SILVER SPRING**

1701 Elton Road
Silver Spring, MD 20903
hilton.com

**HOMEWOOD SUITES
ROCKVILLE—GAITHERSBURG**

14975 Shady Grove Road
Rockville, MD 20850
rockvillegaithersburg.homewoodsuites.com

**HOMEWOOD SUITES WASHINGTON
DC—NORTH GAITHERSBURG**

805 Russell Avenue
Gaithersburg, MD 20879
homewoodsuites.com

HOTEL SILVER SPRING

8777 Georgia Avenue
Silver Spring, MD 20910
hotelsilverspringmd.com

HYATT REGENCY BETHESDA

One Bethesda Metro Center
Bethesda, MD 20814
hyattregencybethesda.com

IRONMARK

9040 Junction Drive
Annapolis Junction, MD 20701
ironmarkusa.com

JOSIAH HENSON MUSEUM & PARK

11420 Old Georgetown Road
North Bethesda, MD 20852
montgomeryparks.org

JOYFUL BATH

5534 Wilkins Court
North Bethesda, MD 20852
joyfulbathco.com

KENTLANDS MANSION

320 Kent Square Road
Gaithersburg, MD 20878
gaithersburgmd.gov/

KID MUSEUM

6400 Democracy Boulevard
Bethesda, MD 20817
kid-museum.org

KV LIMOUSINE SERVICE, LLC

408 Old Ritchie Road
Columbia Heights, MD 20743
kvlimo.com

LA PANETERIA RESTAURANTE

4921 Cordell Avenue
Bethesda, MD 20814
lapanetteria.com

LAYTONSVILLE GOLF COURSE

7130 Dorsey Road
Gaithersburg, MD 20882
mcggolf.com

LITTLE BENNETT CAMPGROUND

23705 Frederick Road
Clarksburg, MD 20871
montgomeryparks.org

LITTLE BENNETT REGIONAL PARK

23701 Frederick Road
Clarksburg, MD 20871
montgomeryparks.org

LITTLE BENNETT GOLF COURSE

25900 Prescott Road
Clarksburg, MD 20871
mcggolf.com

LTD CREATIVE

103 South Carroll Street,
Suite 2D
Frederick MD 21701
ltdcreative.com

**MARYLAND SOCCERPLEX &
DISCOVERY SPORTS CENTER**

18031 Central Park Drive
Boys, MD 20841
mdsoccerplex.org

MAYORGA ORGANICS

1029 East Gude Drive
Suite 110
Rockville, MD 20850
mayorgaorganics.com

MCDOT/COMMUTER SERVICES

capitalbikeshare.com

**MONTGOMERY COUNTY CHAMBER
OF COMMERCE**

51 Monroe Street
Rockville, MD 20850
montgomerycountychamber.com

MONTGOMERY HISTORY

111 West Montgomery Avenue
Rockville, MD 20850
montgomeryhistory.org

MONTGOMERY PARKS

montgomeryparks.org

**NATIONAL CAPITAL TROLLEY
MUSEUM**

1313 Bonifant Road
Colesville, MD 20905
dctrolley.org

**NATIONAL CHARTER BUS
WASHINGTON, D.C.**

1801 Columbia Rd NW #205
Washington, D.C. 20009
nationalbuscharter.com

**NATIONAL MUSEUM OF HEALTH
AND MEDICINE**

2460 Linden Lane
Building #2500
Silver Spring, MD 20910
medicalmuseum.mil

NEEDWOOD GOLF COURSE

6724 Needwood Road
Derwood, MD 20855
mcggolf.com

**OAKLEY CABIN AFRICAN AMERICAN
MUSEUM AND PARK**

3610 Brookeville Road
Brookeville, MD 20833
montgomeryparks.org

OLNEY CHAMBER OF COMMERCE

3460 Olney-Laytonsville Road
Olney, MD 20832
olneymd.org

OLNEY THEATRE CENTER

2001 Olney-Sandy Spring Road
Olney, MD 20832
olneytheatre.org

PETERSON COMPANIES

12500 Fair Lakes Circle,
Suite 400
Fairfax, VA 22033
petersoncos.com

PIKE AND ROSE

11580 Old Georgetown Road
Bethesda, MD 20852
pikeandrose.com

**POOLESVILLE AREA CHAMBER OF
COMMERCE**

P.O. Box 256
Poolesville, MD 20837
pacc.cc

POOLESVILLE GOLF COURSE

16601 West Willard Road
Poolesville, MD 20837
mcggolf.com

POTOMAC CHAMBER OF COMMERCE

P.O. Box 59160
Potomac, MD 20859
potomacchamber.org

PINSTRIPES BETHESDA

11920 Grand Park Avenue
North Bethesda, MD 20865
pinstripes.com

RATTLEWOOD GOLF COURSE

13501 Penn Shop Road
Mt. Airy, MD 21771
mcggolf.com

RED ROOF INN PLUS—ROCKVILLE

16001 Shady Grove Road
Rockville, MD 20850
redroof.com

RESIDENCE INN BETHESDA DOWNTOWN

7335 Wisconsin Avenue
Bethesda, MD 20814
marriott.com/wasbr

RESIDENCE INN GAITHERSBURG

9721 Washingtonian Boulevard
Gaithersburg, MD 20878
marriott.com/waswn

rio

9841 Washingtonian Boulevard
Suite S1
Gaithersburg, MD 20878
riolakefront.com

RMA WORLDWIDE CHAUFFEURED TRANSPORTATION

12270 Wilkins Avenue
Rockville, MD 20852
rmalimo.com

ROCK CREEK REGIONAL PARK

6129 Needwood Lake Drive
Rockville, MD 20855
montgomeryparks.org

ROCK HILL ORCHARD

28600 Ridge Road
Mt. Airy, MD 21771
rockhillorchard.com

ROCKVILLE CHAMBER OF COMMERCE

1 Research Court
Suite 450
Rockville, MD 20850
rockvillechamber.org

ROCKVILLE CIVIC CENTER PARK

603 Edmonston Drive
Rockville, MD 20851
rockvillemd.gov

ROCKVILLE TOWN SQUARE

1626 East Middle Lane
Rockville, MD 20852
rockvilletownsquare.com

ROCKWOOD MANOR RETREATS & EVENTS

11001 MacArthur Boulevard
Potomac, MD 20854
rockwoodmanor.com

ROUND HOUSE THEATRE

4545 East West Highway
Bethesda, MD 20814
roundhousetheatre.org

SANDY SPRING MUSEUM

17901 Bentley Road
Sandy Spring, MD 20860
sandspringmuseum.org

SARA TORRENCE CMP EMERITUS & ASSOCIATES

419 Russell Avenue #509
Gaithersburg, MD 20879

SAVORY GOURMET

23204 Linden Vale Drive
Clarksburg, MD 20871
savorygrmt.com

SHADOWLAND LASER ADVENTURES

624 Quince Orchard Road
Gaithersburg, MD 20878
shadowlandadventures.com/Gaithersburg

SHERATON ROCKVILLE

920 King Farm Boulevard
Rockville, MD 20850
sheratonrockville.com

SILLO FALLS

19501 Georgia Avenue
Brookeville, MD 20833
themanoratsilofalls.com

SIMPLY FRESH EVENTS

7621 Rickenbacker Dr
STE 500
Gaithersburg, MD 20879
simplyfreshevents.com

SILVER BRANCH BREWING COMPANY

8401 Colesville Road #150
Silver Spring, MD 20910
silverbranchbrewing.com

SILVER SPRING CIVIC BUILDING AT VETERANS PLAZA

One Veterans Place
Silver Spring, MD 20910
montgomerycountymd.gov

SLEEP INN ROCKVILLE

2 Research Court
Rockville, MD 20850
choicehotels.com

SLIGO CREEK GOLF COURSE

9701 Sligo Creek Parkway
Silver Spring, MD 20901
mcggolf.com

SMOKEY GLEN FARM

16407 Riffleford Road
Gaithersburg, MD 20878
smokeyglenfarm.com

SOUTH GERMANTOWN RECREATIONAL PARK

18041 Central Park Circle
Boyd's, MD 20841
montgomeryparks.org

SPARK BY HILTON GERMANTOWN

20260 Goldenrod Lane
Germantown, MD 20876
hilton.com

SPRINGHILL SUITES BY MARRIOTT GAITHERSBURG

9715 Washingtonian Boulevard
Gaithersburg, MD 20878
marriott.com/wasgt

STRATHMORE—THE MUSIC CENTER & MANSION

5301 Tuckerman Lane
North Bethesda, MD 20852
strathmore.org

THE LODGE AT LITTLE SENECA CREEK

14500-A Clopper Road
Boyd's, MD 20841
montgomeryparks.org

THE BETHESDAN, TAPESTRY COLLECTION BY HILTON

8120 Wisconsin Avenue
Bethesda, MD 20814
hilton.com/en/hotels/wasbaup-the-bethesdanhotel

THE CROSSVINES

16001 West Willard Road
Poolesville, MD 20837
crossvines.com

THE FAMILY ROOM

6820 Olney Laytonsville Road
Laytonsville, MD 20882
thefamilyroomlaytonsville.com

THE FILLMORE SILVER SPRING

8656 Colesville Road
Silver Spring, MD 20910
fillmoresilverspring.com

THE KING BARN DAIRY MOOSEUM

18028 Central Park Circle
Boyd's, MD 20841
mooseum.com

THE WOMAN'S CLUB OF BETHESDA

5500 Sonoma Road
Bethesda, MD 20817
bethesdawomansclubmd.com

TOBY'S DINNER THEATRE

5900 Symphony Woods Road
Columbia, MD 21004
tobysdinnertheatre.com

TOP GOLF GERMANTOWN

20101 Century Boulevard
Germantown, MD 20874
topgolf.com

TOWNEPLACE SUITES BY MARRIOTT GAITHERSBURG

212 Perry Parkway
Gaithersburg, MD 20877
marriott.com/wastg

TWIN VALLEY DISTILLERS

1029 E. Gude Dr, Suite 105
Rockville, MD 20850
marylanddistillery.com

VAMOOSE BUS

7400 Waverly Street
Bethesda, MD 20814
vamoosebus.com

VINO 301

145 Fleet Street, #245
National Harbor, MD 20745
vino301.com

VISARTS

155 Gibbs Street
Rockville, MD 20850
visartscenter.org

WAREDACA BREWING COMPANY

4017 Damascus Road
Laytonsville, MD 20882
waredacabrewing.com

WASHINGTON, D.C. SOUTH ASIAN FILM FESTIVAL

501 Skidmore Boulevard
Gaithersburg, MD 20877
dcsaff.com

WASHINGTON METROPOLITAN AREA TRANSIT AUTHORITY

600 Fifth Street NW
Washington D.C. 20001
wmata.com

WESTFIELD MONTGOMERY MALL

7101 Democracy Boulevard
Bethesda, MD 20817
westfield.com/montgomery

WINDRIDGE VINEYARDS

15700 Darnestown Road
Darnestown, MD 20874
www.windridge.wine

WOODBOURNE CREAMERY AT ROCK HILL ORCHARD

28600 Ridge Road
Mount Airy, MD 21771
www.rockhillorchard.com

WOODEND SANCTUARY & MANSION

8940 Jones Mill Road
Chevy Chase, MD 20815
woodendsanctuary.org

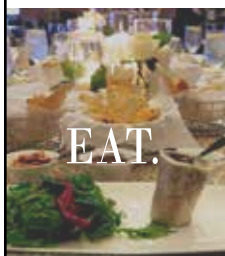
WOODLAWN MANOR CULTURAL PARK & UNDERGROUND RAILROAD EXPERIENCE TRAIL

16501 Norwood Road
Sandy Spring, MD 20860
historyintheparks.org

BolgerCenter

WILLIAM F.
A CONFERENCE HOTEL

Make every experience unforgettable with Bolger



EAT.



MEET.



RETREAT.

Surrounded by 83 acres of beautifully manicured grounds and lush gardens in a retreat setting, the William F. Bolger Center, a conference hotel, offers the most exclusive accommodations in Potomac, Maryland.

Located near Bethesda, Rockville and downtown Washington, DC, our I.A.C.C certified conference hotel offers your attendees an affordable productive learning environment and provides the highest level of both professional and personal service.

This 431 room historic hotel features 75 meeting spaces including the glamorous Stained Glass Hall Ballroom, offering spectacular ambiance for retreats, milestones and meetings.

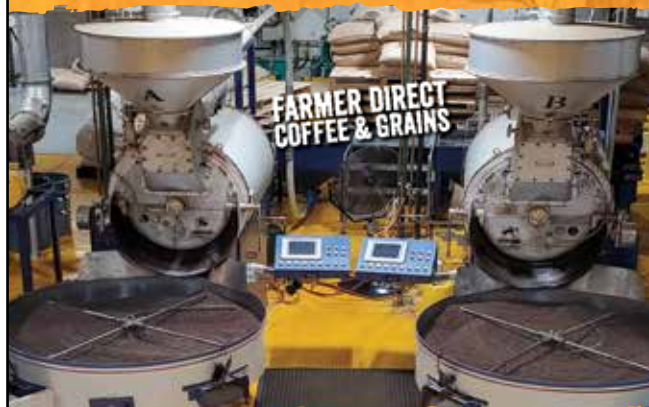
SALES DEPARTMENT (301) 983-7765

**9600 Newbridge Drive
Potomac, MD 20854**

MAYORGA

organics

**VISIT THE LARGEST ORGANIC CERTIFIED COFFEE ROASTERY
AND CHIA PROCESSING PLANT ON THE EAST COAST**



**CALL US OR VISIT OUR WEBSITE TO LEARN ABOUT
OUR COFFEE SHOP HOURS AND TOURS**

**ADDRESS: 1029 EAST GUDE DRIVE, ROCKVILLE, MD
(301) 315-8093**

WWW.MAYORGAORGANICS.COM

20% OFF
ALL COFFEES & CHIA
VALID ONLY FOR IN STORE
PURCHASES UNTIL JUNE 2020
MUST PRESENT COUPON

**VISIT
MoCo**
ADVENTURE PLANNER

START PLANNING YOUR NEXT ADVENTURE

▲ C&O Canal National Historical Park

Try something different when you're in Montgomery County and plan a self-guided tour! From museums and live music to shopping and dining, start planning a weekend of fun with the **Visit MoCo Adventure Planner app**.

LEARN MORE AT
VisitMontgomery.com/app



**VISIT
MONTGOMERY**
MARYLAND'S CULTURAL CAPITAL™



**DOWNLOAD
THE APP**

GOOD TIMES GREAT DRINKS

IN MONTGOMERY COUNTY
MARYLAND



➤ Sugarloaf Mountain Vineyard



➤ The Crossvines



➤ Twin Valley Distillers

TASTEMAKERS *Trail*TM

➤ TASTEMAKERSTRAIL.COM



VISIT
MONTGOMERY
MARYLAND'S CULTURAL CAPITAL